

CABINET INSTALLATION INSTRUCTIONS

AUXILIARY CABINET INSTRUCTIONS:

USE THESE INSTRUCTIONS IN CONJUNCTION WITH THE INSTALLATION MANUAL.

NOTE: DO NOT REMOVE THE SIDE PANELS OF THE UPS.

- STEP 1: USE FIGURE 3 TO POSITION THE UPS CABINET.
 - STEP 2: REMOVE M16 BOLTS, COPPER STRAPS AND WASHERS FROM THE FIRST AUXILIARY CABINET FOR RE-USE LATER.
 - STEP 3: ALIGN THE AUXILIARY CABINET TO THE UPS AS CLOSE AS POSSIBLE. ROUTE ALL POWER AND CONTROL CABLES THROUGH THE SIDE OF THE AUXILIARY CABINET. HORIZONTAL ALIGNMENT OF THE UPS AND AUXILIARY CABINET IS DESCRIBED IN DETAIL IN SHEET 4.
 - STEP 4: INSTALL THE GALVANIZED STRAPS PROVIDED WITH THE UPS, ONE IN THE FRONT AND ONE AT THE BACK AS SHOWN IN FIGURE 1, USING THE M16 BOLTS AND WASHERS REMOVED IN STEP 2 AND THE M6 SCREWS PROVIDED WITH THE UPS. TIGHTEN THESE HARDWARE. THE COPPER STRAPS CAN BE DISCARDED.
- PROCEED WITH STEP 5 IF THERE ARE MORE AUXILIARY CABINETS.
- STEP 5: POSITION THE NEXT AUXILIARY CABINET. HORIZONTAL ALIGNMENT OF THE AUXILIARY CABINET IS DESCRIBED IN DETAIL IN SHEET 4.
 - STEP 6: ROUTE ALL POWER AND CONTROL CABLES THROUGH THE SIDE OF THE AUXILIARY CABINET.
 - STEP 7: LOOSEN THE FRONT COPPER STRAP OF THIS AUXILIARY CABINET AND CONNECT THE OTHER END OF THE COPPER STRAP TO THE ADJACENT AUXILIARY CABINET USING THE M16 BOLT REMOVED IN STEP 2. TIGHTEN THESE HARDWARE.
 - STEP 8: REPEAT STEP 7 FOR THE REAR COPPER STRAP.

ADJACENT BATTERY CABINET INSTALLATION:

THE PROCEDURE IS SIMILAR TO THE AUXILIARY CABINET PROCEDURE ABOVE.

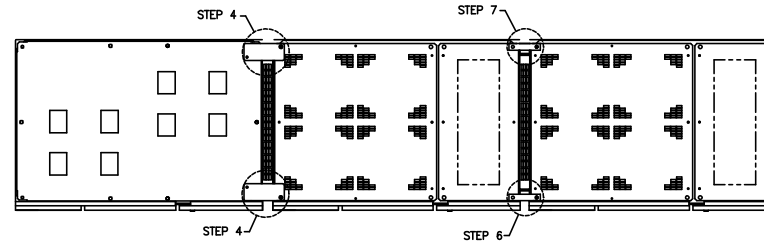


FIGURE-1
TOP VIEW

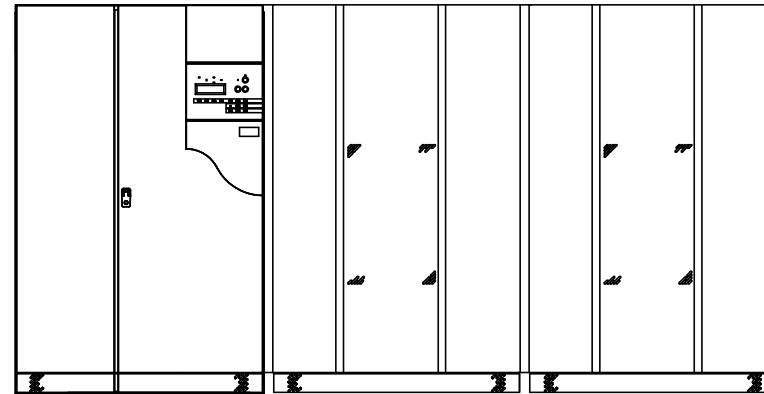


FIGURE-2
FRONT VIEW

		DIMENSIONS								
		A	B	C	D	E	F	G	H	J
LEVELER CENTER		1.26	28.99	4.44	44.74	42.35	26.60	2.44	2.61	5.62
		(32)	(736)	(113)	(1136)	(1075.7)	(675.6)	(61.98)	(66.29)	(142.75)
LEVELER TANGENT	M	.08	31.43	47.10	44.712	2.00	28.962	1.268		
		(2)	(798.32)	(1196)	(1135.69)	(51)	(735.64)	(32.21)		
OVERALL	L	47.56								
		(1208)								

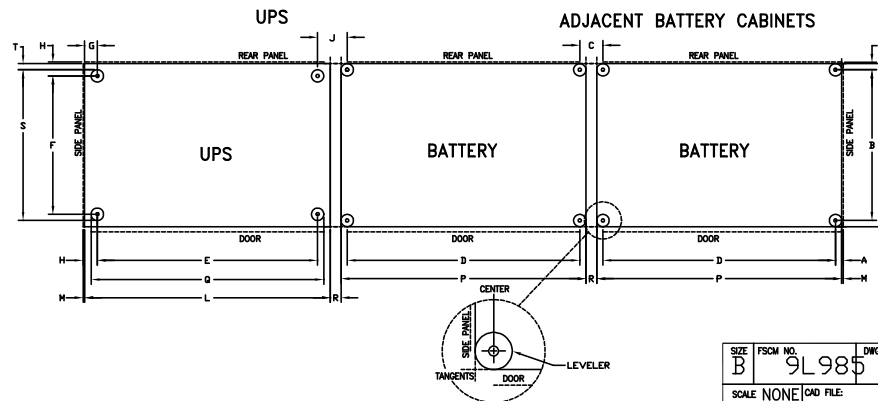


FIGURE-3
FLOOR LAYOUT

SIZE	FSCM NO.	DWG. NO.	REV.
B	9L985	90-133061-05	A00
SCALE	NONE	CAD FILE	SHEET 3 of 4