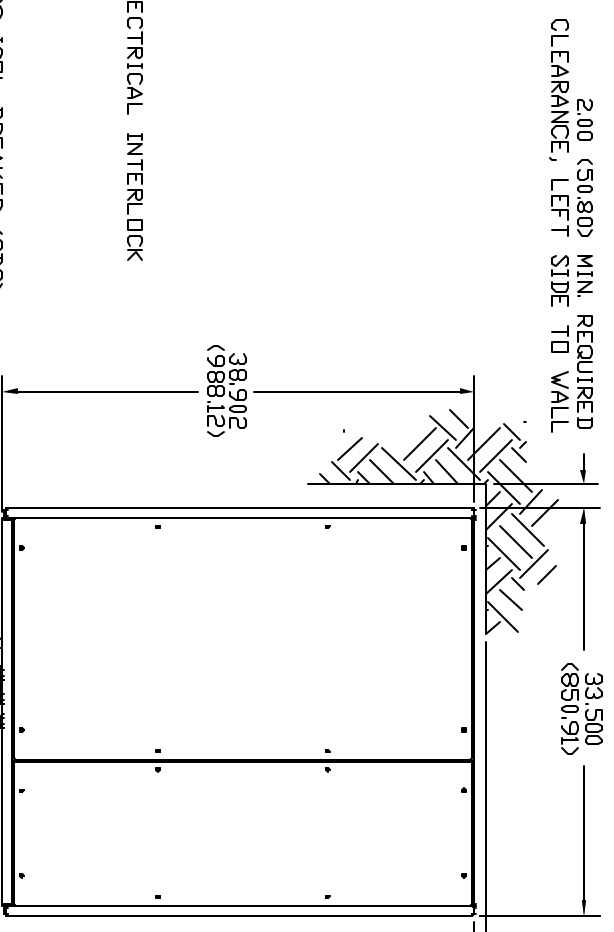
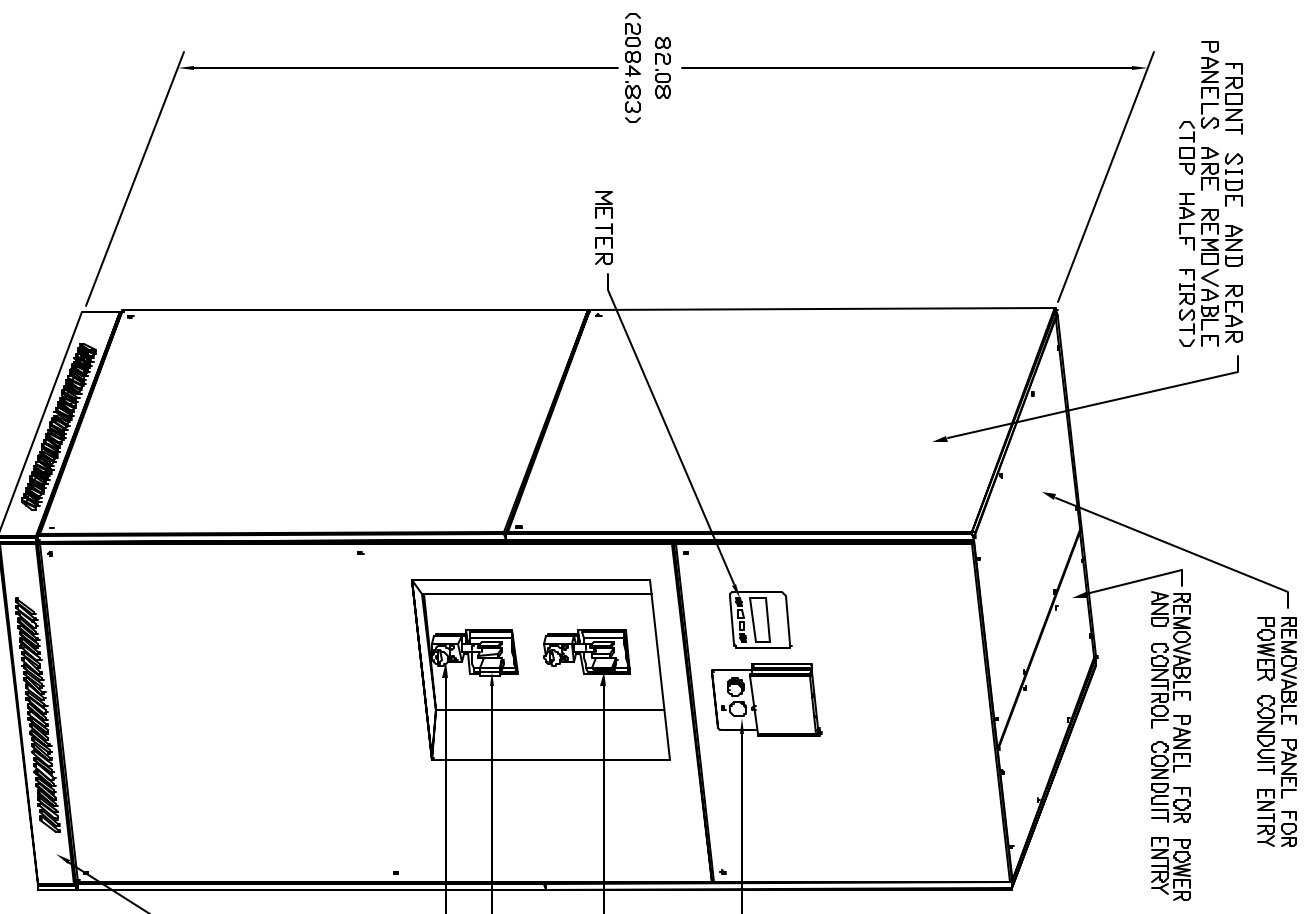


MGE UPS SYSTEMS, INC. CLAIMS PROPRIETARY RIGHTS IN THE MATERIAL DISCLOSED HEREIN. THIS DOCUMENT IS ISSUED FOR ENGINEERING INFORMATION ONLY. IT MAY NOT BE DISCLOSED TO OTHERS NOR MAY IT BE USED FOR MANUFACTURING PURPOSES WITHOUT WRITTEN PERMISSION FROM MGE UPS SYSTEMS, INC.



RIGHT SIDE ACCESS RECOMMENDED FOR UPS CABLE INSTALLATION

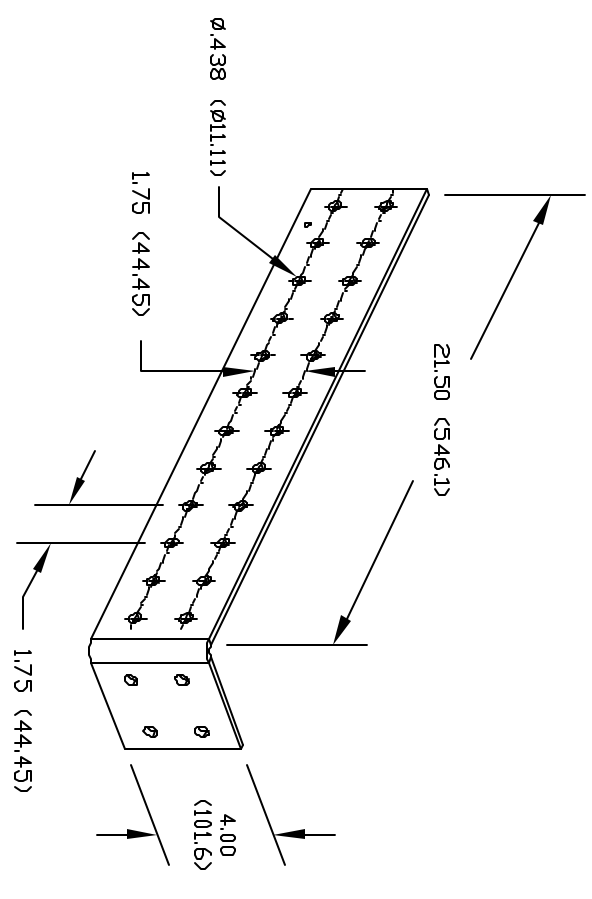
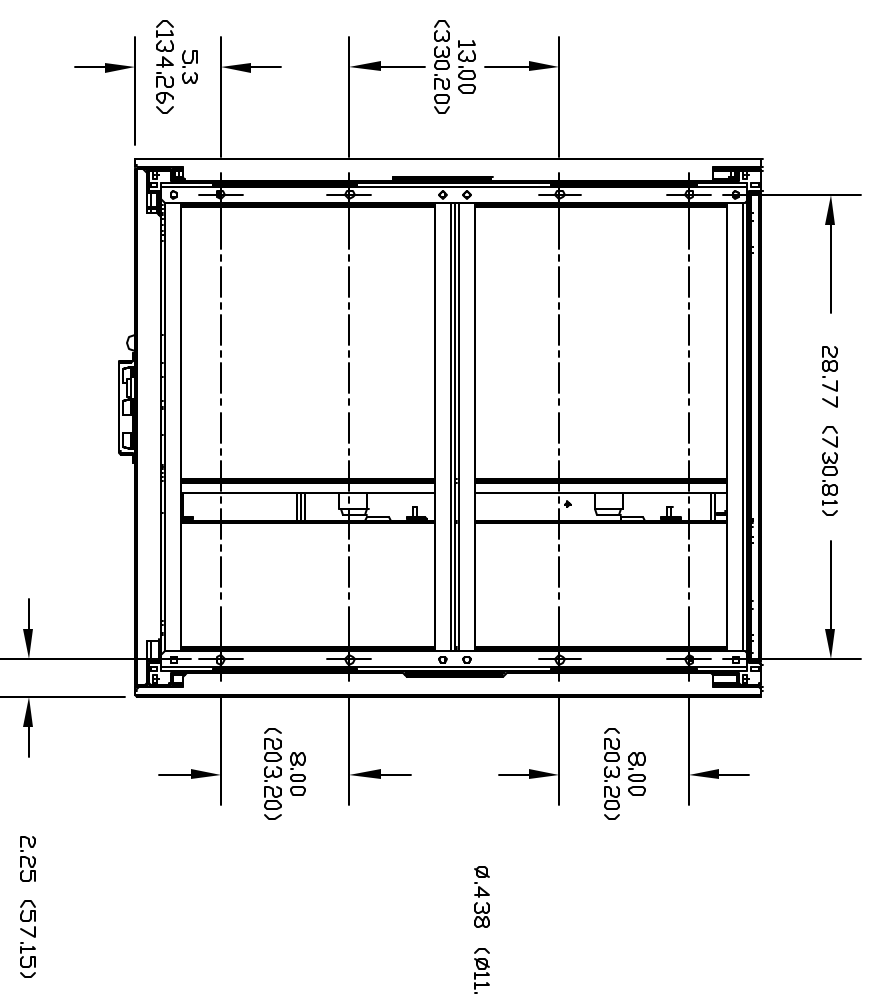
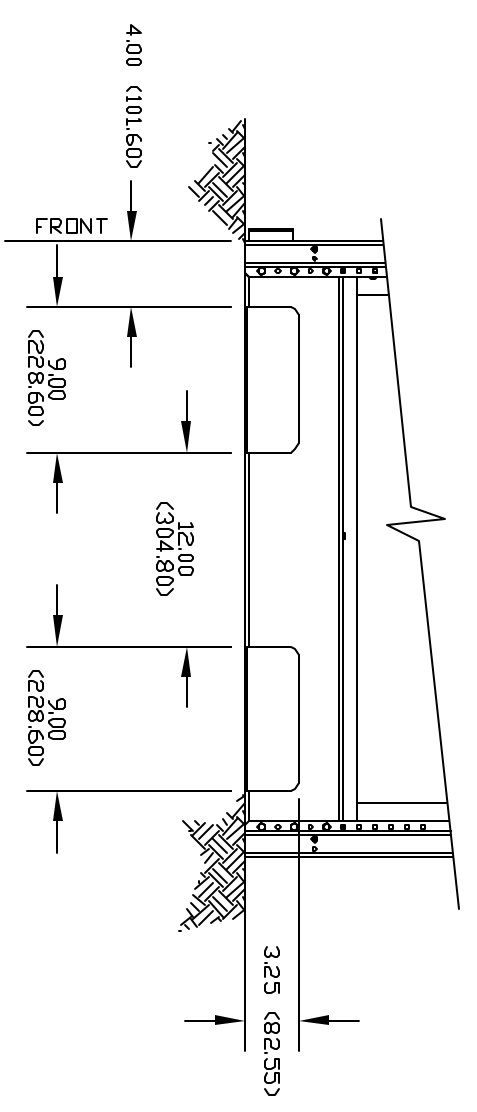
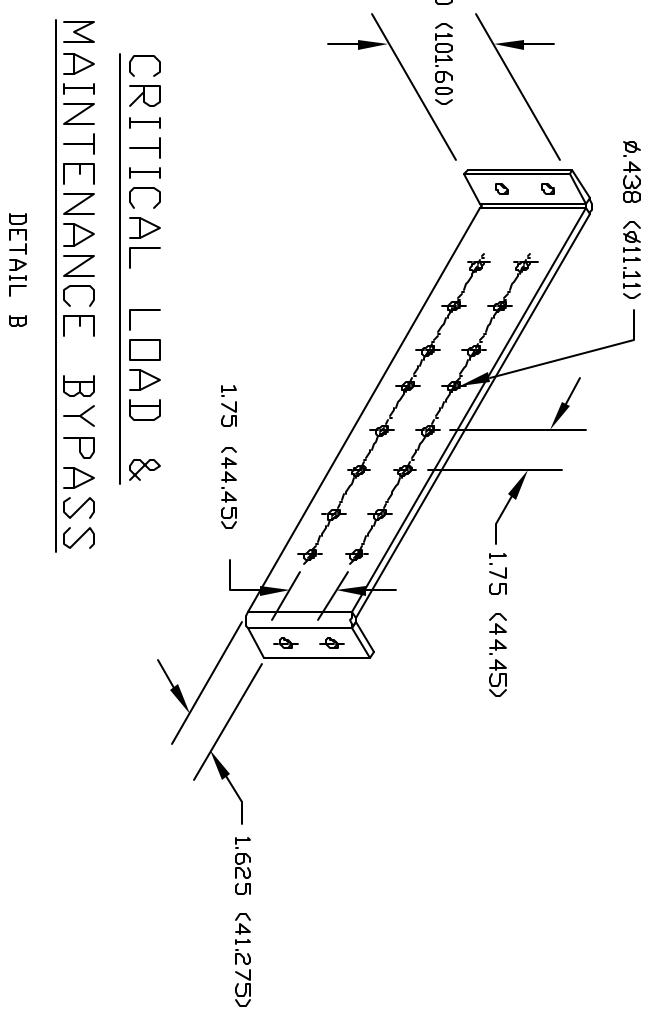
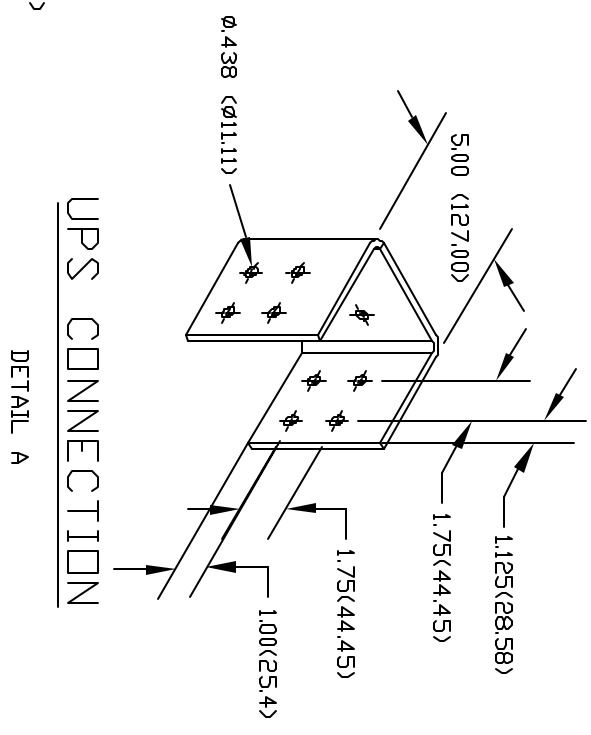
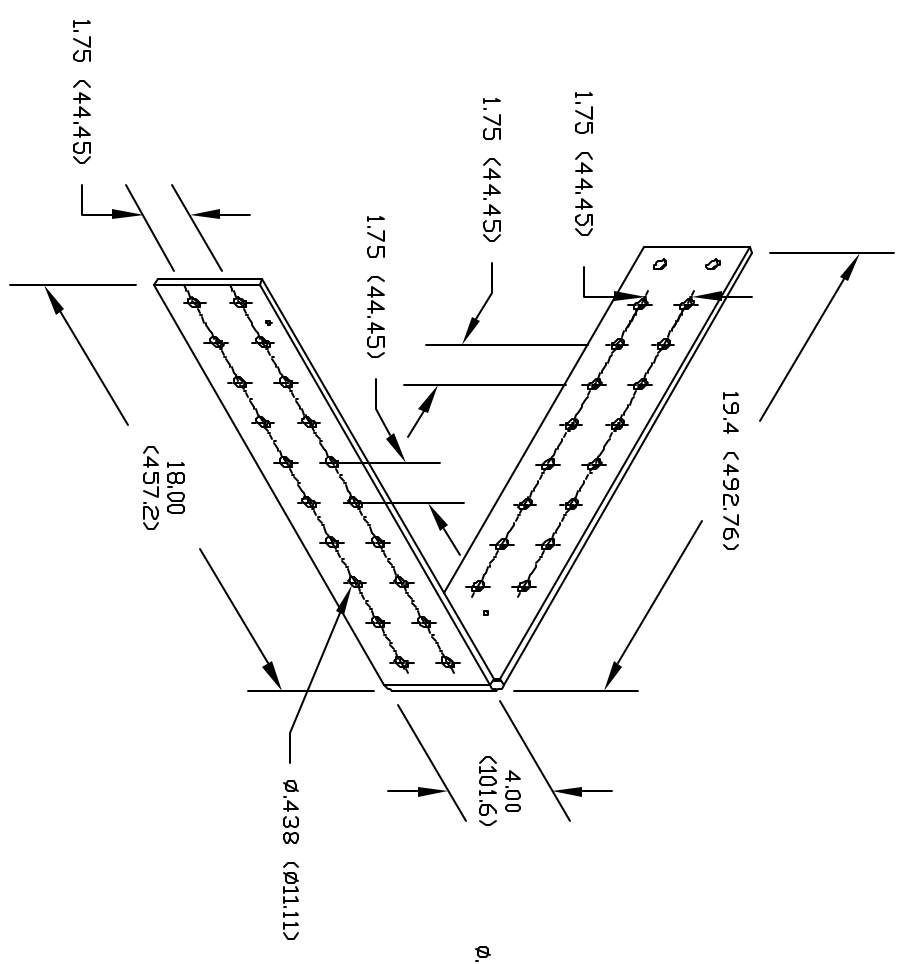
- 1. DIMENSION FORMAT IS INCHES (MM). ALL DIMENSIONS ARE TO OUTSIDE EDGES OF THE CABINET, EXCLUDING HARDWARE, INTERLOCK, ETC.
- 2. A PHILLIPS SCREWDRIVER IS REQUIRED TO REMOVE EXTERNAL PANELS.
- 3. COLOR: MGE LIGHT GRAY (RAL 9002). AIR INTAKE COVERS (RAL 7038).
- 4. OPERATING TEMPERATURE: 32°F (0°C) MIN. TO 95°F (35°C) MAX. RECOMMENDED OPERATING RANGE: 6-0°F (15°C) TO 77°F (25°C).
- 5. AIR EXHAUST: NONE.
- 6. HEAT GENERATION: NEGIGIBLE.
- 7. WEIGHT: 940 LBS.
- 8. REFER TO MGE DOCUMENT NO. 9-00038-00 FOR CABLE PREPARATION PROCEDURE FOR FIELD WIRING.
- 9. ALL EXTERNAL WIRING SUPPLIED AND CONNECTED BY CUSTOMER REFER TO THE INSTALLATION MANUAL FOR MORE DETAILS. CONTROL WIRES SHOULD BE ROUTED IN THE CONTROL WIRE CHANNEL PROVIDED BEHIND THE RIGHT FRONT FRAME (SEE SHEET 2).
- 10. REMOVE NEUTRAL-TO-GROUND BOND IN EACH PARALLEL UPS.
- 11. AVAILABLE RATINGS: 350A, 700A, 1200A, REF ASSY: 72-133077-00, -35 AND -70.

NOTES: UNLESS OTHERWISE SPECIFIED.

REVISIONS			
REV	DESCRIPTION	DATE	APPROVED
A00	NEW RELEASE ECN-003480	07/23/03	LPG

DWG NO. 90-133077-00 SH 1 REV. A00

UNLESS OTHERWISE SPECIFIED DIMENSIONS ARE IN INCHES AND [MILLIMETERS]. TOLERANCES ARE:		CONTRACT NO.		MGE UPS Systems, Inc. 1660 Scenic Avenue Costa Mesa, CA. 92626 U.S.A.		
.X=#	[MILLIMETERS]	APPROVALS		INSTALLATION DRAWING SYSTEM MBC 100 TO 225KVA GALAXY PW		
.XX=#		DRAWN	H.DINH			DATE
.XXX=#		CHECKED	LNA			05/31/02
ANGLES ±		ISSUED	LNA	05/31/02	SCALE NONE	
MATERIAL		DO NOT SCALE DRAWING		SIZE	REV.	
FINISH				B	A00	
NOTE: 3				CAGE CODE	SHEET 1 of 4	
				9L985		
				DWG NO.		
				90-133077-00		



FORK LIFT CUTOUT

DETAIL D

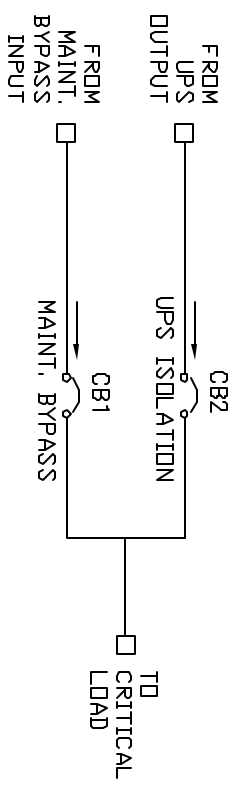
SEISMIC BOLTING

DETAIL E

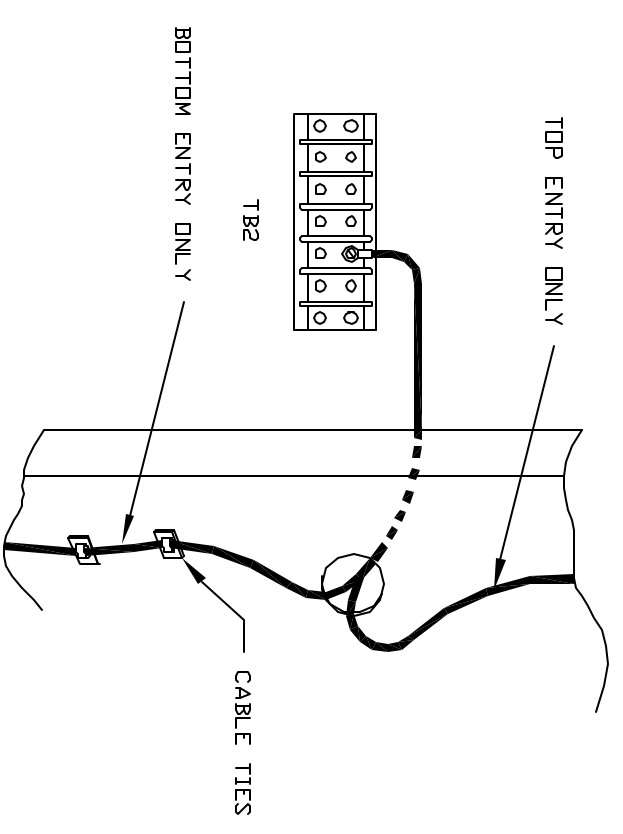
NEUTRAL

DETAIL G

SIZE	CAGE CODE	DWG NO.	REV.
B	9L985	90-133077-00	A00
SCALE	NONE	CAD	SHEET
			3



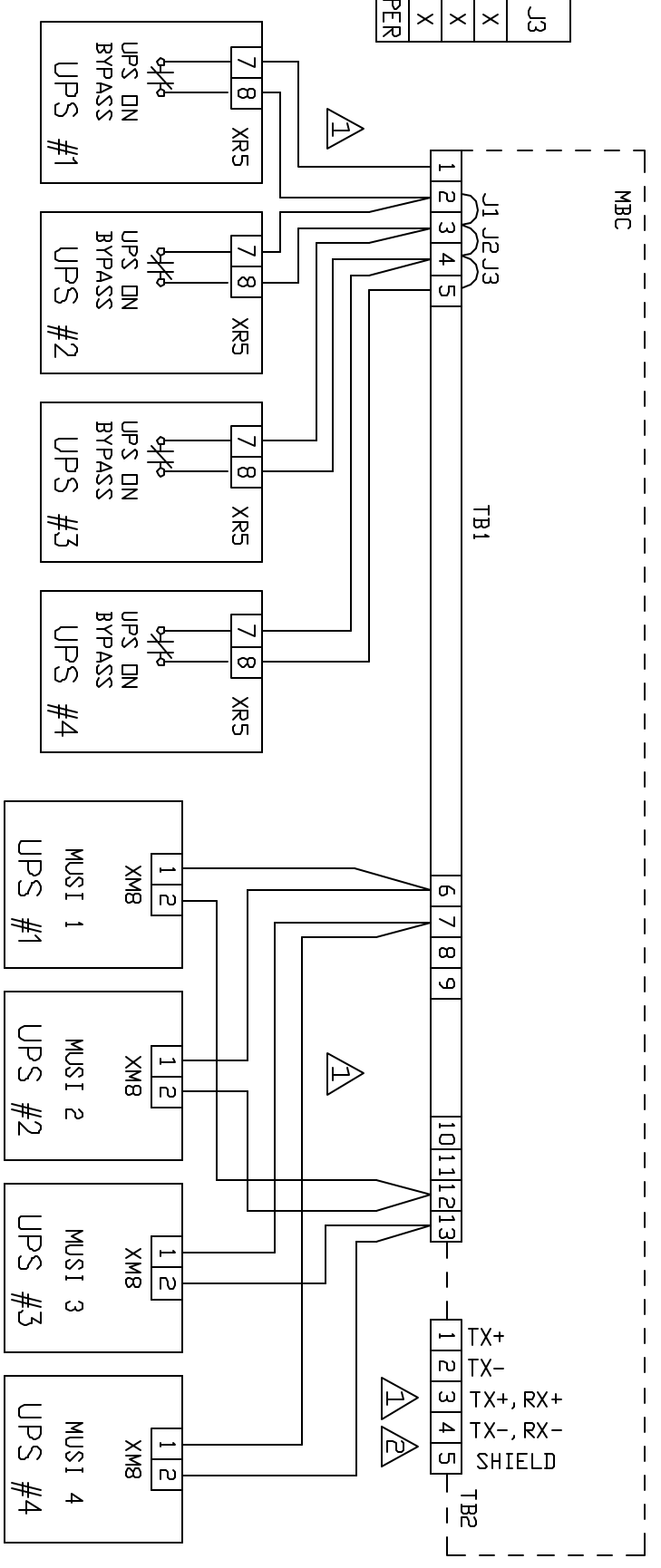
SINGLE LINE DIAGRAM



CONTROL WIRE ROUTING

DETAIL C

NUMBER OF UPS	J1	J2	J3
1	X	X	X
2		X	X
3			X
4	NO JUMPER		



ALL CONNECTIONS ARE PROVIDED AND CONNECTED BY CUSTOMER. RECOMMENDED WIRES: #16 AWG, 600V.

RECOMMENDED WIRE: #18 AWG 4 CONDUCTORS SHIELDED.

NOTES: UNLESS OTHERWISE SPECIFIED

SIZE	CAGE CODE	DWG NO.	REV.
B	9L985	90-133077-00	A00
SCALE	NONE	CAD	SHEET 4