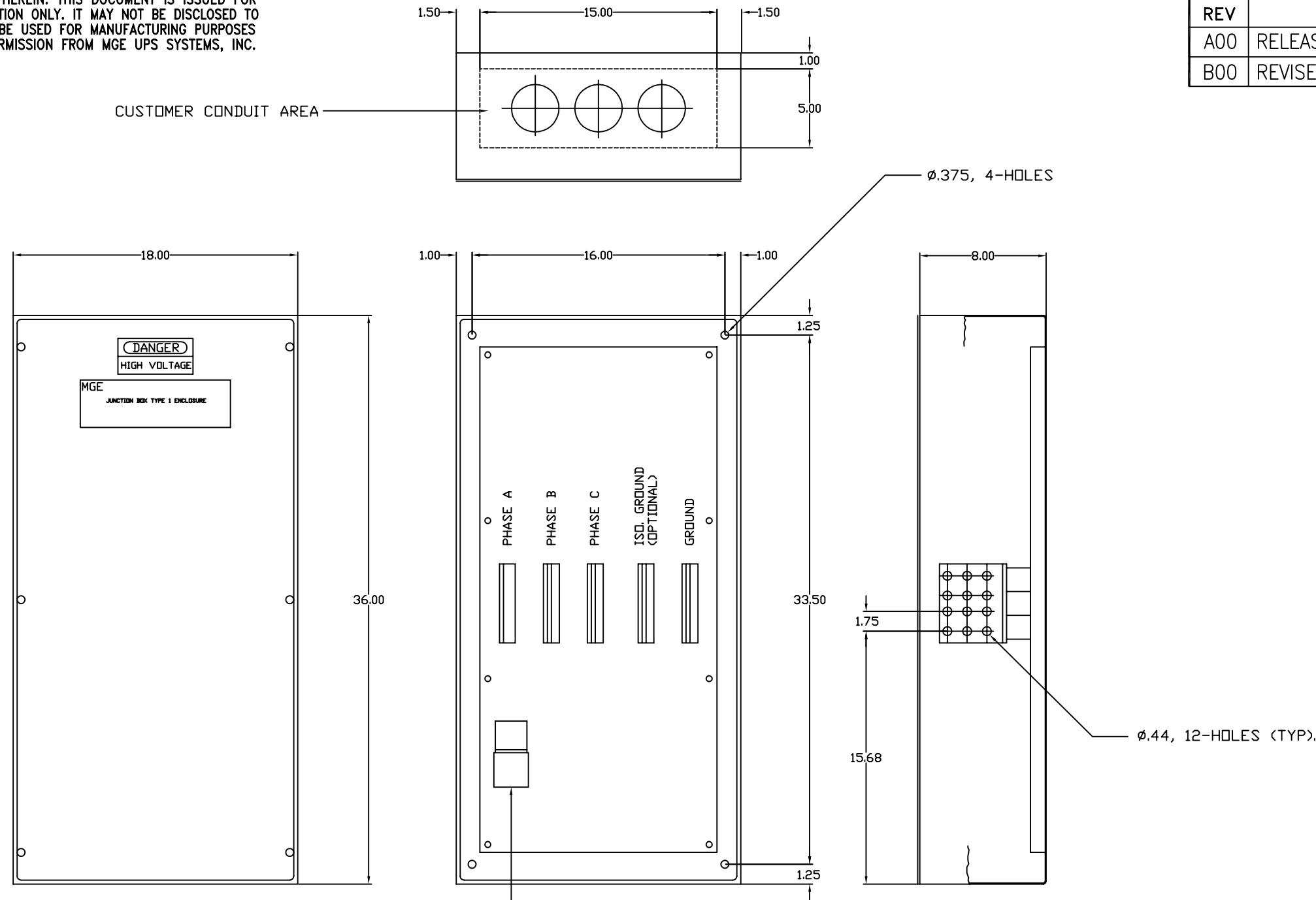


MGE UPS SYSTEMS, INC. CLAIMS PROPRIETARY RIGHTS IN THE MATERIAL DISCLOSED HEREIN. THIS DOCUMENT IS ISSUED FOR ENGINEERING INFORMATION ONLY. IT MAY NOT BE DISCLOSED TO OTHERS NOR MAY IT BE USED FOR MANUFACTURING PURPOSES WITHOUT WRITTEN PERMISSION FROM MGE UPS SYSTEMS, INC.

REVISIONS			
REV	DESCRIPTION	DATE	APPROVED
A00	RELEASE PER ECN-002658	6/4/02	IK
B00	REVISED PER ECN-002790	9/4/02	IK



CONDUIT HOLE CHART	
AMPS	CONDUIT HOLE SIZE
600A	(3) 4"

6. CONNECTION: 4/0 - 300 MCM.
5. ISOLATED GROUND NOT USED ON STS.
4. LIGHTNING ARRESTOR LOCATION.
3. COLOR: MGE LIGHT GREY.
2. WEIGHT APPROX: 250 LBS WITH CONDUITS, NOT SHOWN.
1. DIMENSIONS ARE TO THE OUTSIDE EDGES OF THE ENCLOSURE EXCLUDING HARDWARE, ETC.

UNLESS OTHERWISE SPECIFIED DIMENSIONS ARE IN INCHES AND [MILLIMETERS]. TOLERANCES ARE: DECIMALS [MILLIMETERS] .X=± .1 X=± 2.54 .XX=± .03 X=± .7 .XXX=± .010 .XX=± .25 ANGLES ± 0°30'		CONTRACT NO.		MGE UPS SYSTEMS MGE UPS Systems, Inc. 1660 Scenic Avenue Costa Mesa, CA. 92626 U.S.A.			
MATERIAL		APPROVALS	DATE	INSTALLATION DRAWING 600A POWER J-BOX (36X18X8)			
FINISH		DRAWN	DATE				
DO NOT SCALE DRAWING		CHECKED	DATE				
		ISSUED	DATE	SIZE	CAGE CODE	DWG NO.	REV.
				B	9L985	90-505053-00	B00
				SCALE	NONE	CAD	SHEET 1 OF 1