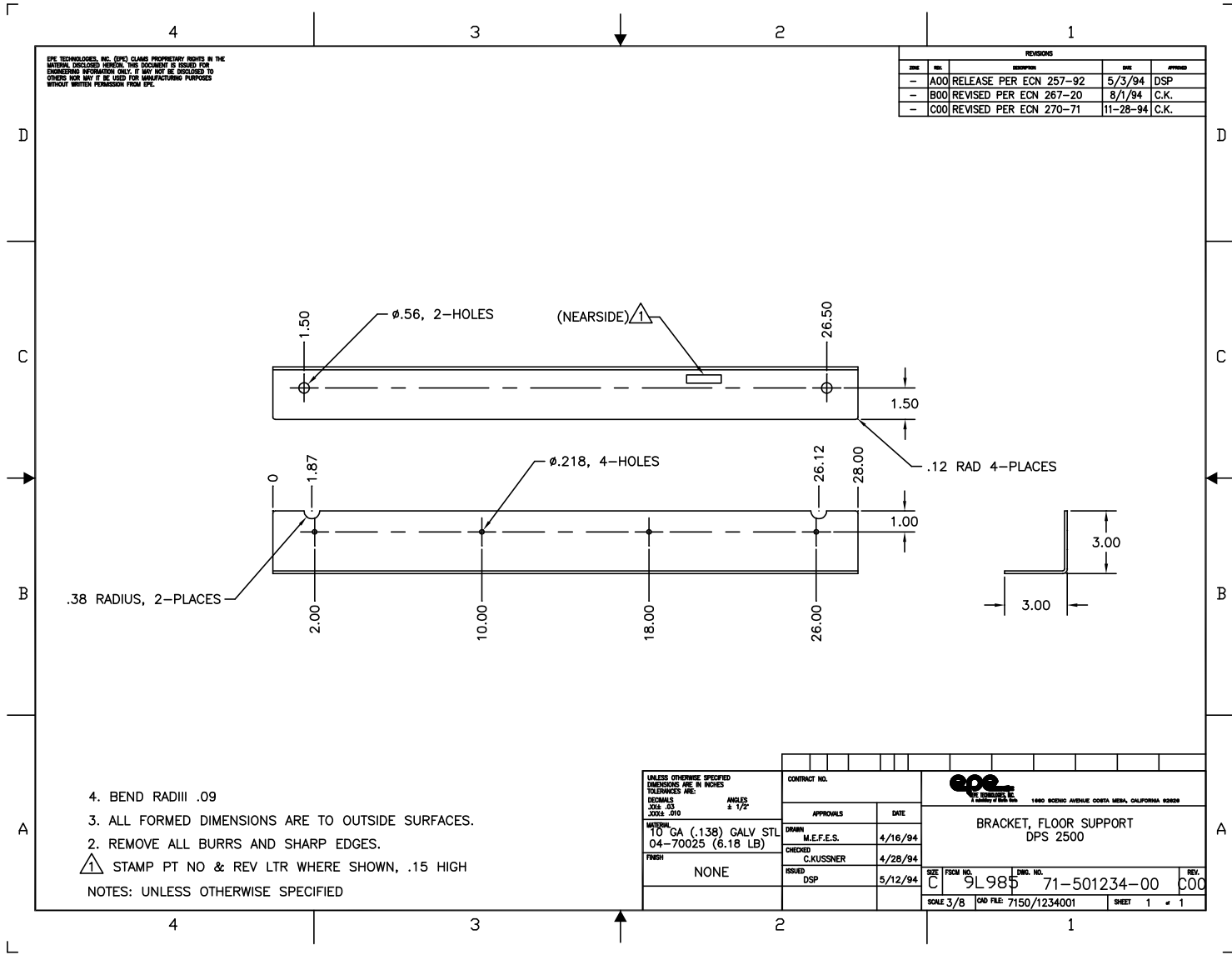


EPE TECHNOLOGIES, INC. (EPE) CLAIMS PROPRIETARY RIGHTS IN THE MATERIAL ENCLOSED HEREON. THIS DOCUMENT IS ISSUED FOR ENGINEERING INFORMATION ONLY. IT MAY NOT BE DISCLOSED TO OTHERS NOR MAY IT BE USED FOR MANUFACTURING PURPOSES WITHOUT WRITTEN PERMISSION FROM EPE.

REVISIONS					
DATE	BY	DESCRIPTION	APP'D	REV	APPROVED
-	A00	RELEASE PER ECN 257-92		5/3/94	DSP
-	B00	REVISED PER ECN 267-20		8/1/94	C.K.
-	C00	REVISED PER ECN 270-71		11-28-94	C.K.



- 4. BEND RADIII .09
 - 3. ALL FORMED DIMENSIONS ARE TO OUTSIDE SURFACES.
 - 2. REMOVE ALL BURRS AND SHARP EDGES.
 - △ STAMP PT NO & REV LTR WHERE SHOWN, .15 HIGH
- NOTES: UNLESS OTHERWISE SPECIFIED

UNLESS OTHERWISE SPECIFIED
DIMENSIONS ARE IN INCHES
TOLERANCES ARE:
DIMENALS .005 ± 1/2
SIZE .03
DIMS .010

MATERIAL:
10 GA (.138) GALV STL
04-70025 (6.18 LB)

FINISH:
NONE

CONTRACT NO.	
APPROVALS	DATE
M.E.F.E.S.	4/16/94
CHECKED C.KUSSNER	4/28/94
ISSUED DSP	5/12/94

EPE
EPE TECHNOLOGIES, INC.
1800 BOWEN AVENUE COSTA MESA, CALIFORNIA 92626

BRACKET, FLOOR SUPPORT
DPS 2500

SIZE C	FORM NO. 9L98	DWG. NO. 71-501234-00	REV. C00
SCALE 3/8		DWG FILE: 7150/1234001	SHEET 1 of 1