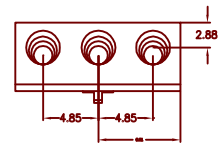
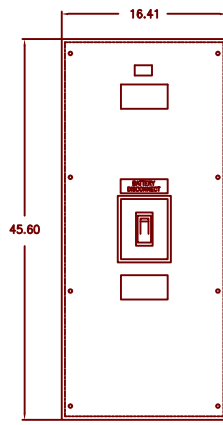


MGE UPS SYSTEMS, INC. (MGE) CLAIMS PROPRIETARY RIGHTS IN THE MATERIAL DISCLOSED HEREON. THIS DOCUMENT IS ISSUED FOR ENGINEERING INFORMATION ONLY. IT MAY NOT BE DISCLOSED TO OTHERS NOR MAY IT BE USED FOR MANUFACTURING PURPOSES WITHOUT WRITTEN PERMISSION FROM MGE.

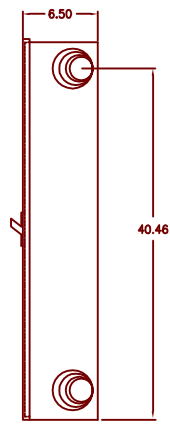
REVISIONS			
REV.	DESCRIPTION	DATE	APPROVED
A00	NEW RELEASE PER ECN 288-05		



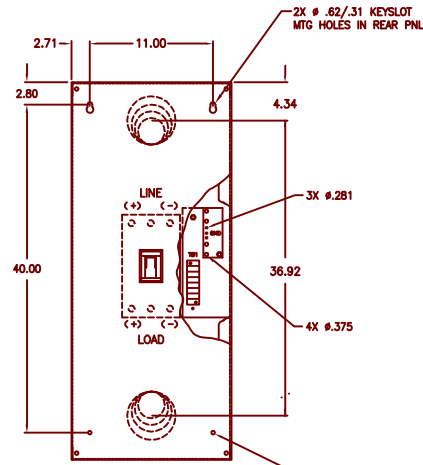
TOP VIEW



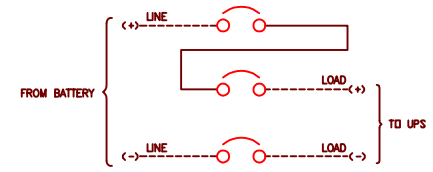
FRONT VIEW



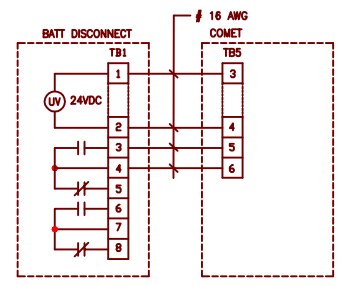
SIDE VIEW



REAR VIEW



SINGLE LINE DIAGRAM



INTERCONNECT DIAGRAM

NOTES:

- UNLESS OTHERWISE SPECIFIED, ALL DIMENSIONS ARE TO THE OUTSIDE EDGE OF THE CABINET, EXCLUDING HARDWARE, CIRCUIT BREAKER HANDLE ETC.
- COLOR: ASA 61 GRAY.
- CONTROL WIRES MUST BE RUN IN INDIVIDUAL CONDUIT SEPARATE FROM POWER WIRES.
- CIRCUIT BREAKER LUGS, LINE & LOAD WILL ACCOMMODATE ONE (1) # 1-600 MCM OR TWO (2) # 1-250 MCM CU WIRES.
- ALL EXTERNAL WIRING BY OTHERS.

UNLESS OTHERWISE SPECIFIED DIMENSIONS ARE IN INCHES TOLERANCES ARE: DECIMALS .005± .000±	ANGLES ± -
MATERIAL	
FINISH	

CONTRACT NO.	
APPROVALS	DATE
DRAWN D.P.	9-24-97
CHECKED	
ISSUED	

MGE UPS SYSTEMS		MGE UPS Systems, Inc. 1660 Scenic Avenue Costa Mesa, CA. 92626	
INSTALLATION DRAWING BATTERY DISCONNECT CABINET (100/125/150 KVA) COMET			
SIZE B	FSCM NO. 9L985	DNW. NO. 90-166000-04	REV. A00
SCALE NONE	CDMET\90160\16604	SHEET 1 OF 1	