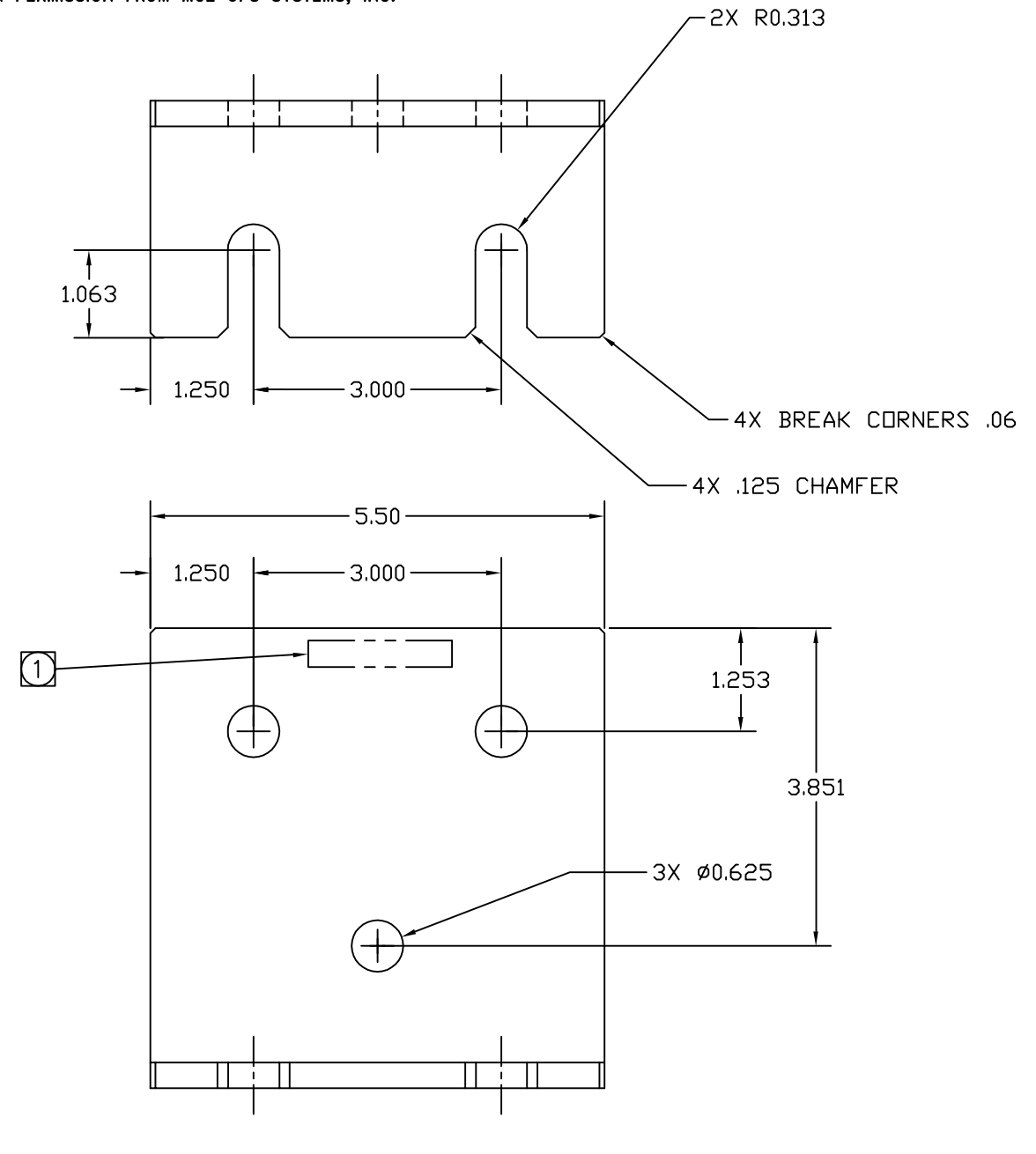


MGE UPS SYSTEMS, INC. CLAIMS PROPRIETARY RIGHTS IN THE MATERIAL DISCLOSED HEREIN. THIS DOCUMENT IS ISSUED FOR ENGINEERING INFORMATION ONLY. IT MAY NOT BE DISCLOSED TO OTHERS NOR MAY IT BE USED FOR MANUFACTURING PURPOSES WITHOUT WRITTEN PERMISSION FROM MGE UPS SYSTEMS, INC.

REVISIONS			
REV	DESCRIPTION	DATE	APPROVED
A00	NEW RELEASE ECN-003267	04/22/03	VNE MA



- 5. POWDER COAT ALL EXPOSED SURFACES AND EDGES. COLOR: RAL 9002 (MGE LIGHT GRAY) FINE TEXTURE.
 - 4. BEND RADIUS: .25
 - 3. ALL FORMED DIMENSIONS ARE TO OUTSIDE SURFACES.
 - 2. REMOVE ALL BURRS AND SHARP EDGES.
 - 1. STAMP PART NO. AND REVISION LETTER ONLY APPROX. WHERE SHOWN .12 HIGH.
- NOTES: UNLESS OTHERWISE SPECIFIED.

UNLESS OTHERWISE SPECIFIED DIMENSIONS ARE IN INCHES AND [MILLIMETERS]. TOLERANCES ARE: DECIMALS [MILLIMETERS] .X=± .1 X=± 2.54 .XX=± .03 X=± .7 .XXX=± .010 XX=± .25 ANGLES ± 0°30'	CONTRACT NO.		MGE UPS Systems, Inc. 1660 Scenic Avenue Costa Mesa, CA. 92626 U.S.A.			
	APPROVALS	DATE				
MATERIAL 5/16 STL PLATE ASTM-A36	DRAWN V.N. EALEY	03/21/03	BRKT SEISMIC 48" BATT CAB 150kVA COMET			
FINISH 5. 1	CHECKED V. N. EALEY	03/24-03				
	ISSUED MASOOD ANVAR	03/24/03	SIZE B	CAGE CODE 9L985	DWG NO. 71-163854-00	REV. A00
	DO NOT SCALE DRAWING		SCALE 1/2	CAD Agile: D71-163854-00	SHEET 1 OF 1	