


MGEDM Battery Cabinet

Designed for the
EPS 8000 1.1/1.0 KVA UPS

Effective Date: 01/26/09

Bulletin Number: 906210-3

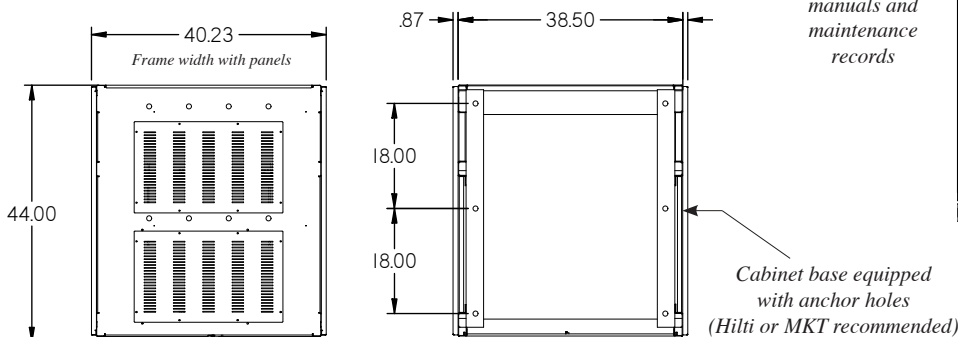
Features:

-  UL Listed with factory assembly.
- IBC 2006 Seismic Certified.
- One of the tightest footprints available. A space saving footprint saves money or allows the possibility of additional runtime.
- Designed to accommodate all VRLA UPS battery makes and models.
- Cabinet mechanical features:
 - Welded heavy gauge steel welded construction.
 - Acid resistant powder coat epoxy paint.
 - Doors and panels remove easing installation and maintenance.
 - Front and back of cabinet accessible to standard material handling equipment.
 - Can be installed in single or multiple cabinet lineup as “adjacent”, “remote”, or “adjacent/remote” from the UPS.
 - Side panels designed as universal for installation on either side
 - Dedicated area for electrical output connections and cable routing.
 - Designed for monitor harness installation
 - Locking right door has pocket for manuals and maintenance records
- System electrical features:
 - SqD DC rated breakers in each cabinet with 24V UVR and 2A/2B aux. contacts.
 - Breaker installed horizontally to lessen the chance of opening during a seismic event.
 - 24V UVR & 2A/2B Aux contacts cable harness included from each battery string breaker to the UPS.
 - Output cables standard for “Adjacent” configuration and are continuous run from each output breaker to the UPS DC input. NO daisy chaining of battery string to battery string.
 - Batteries are not obstructed easing maintenance and removal.

Optional items include:

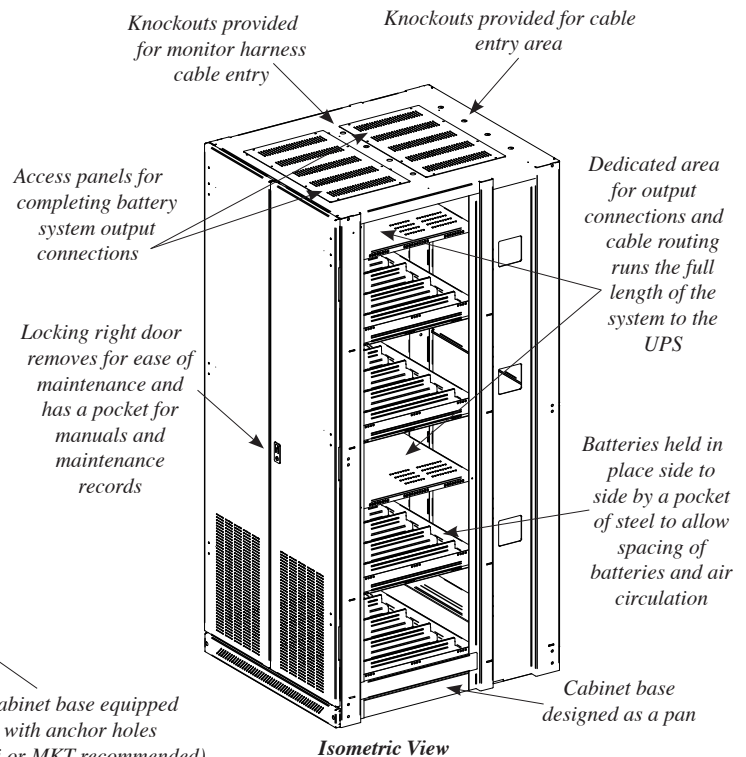
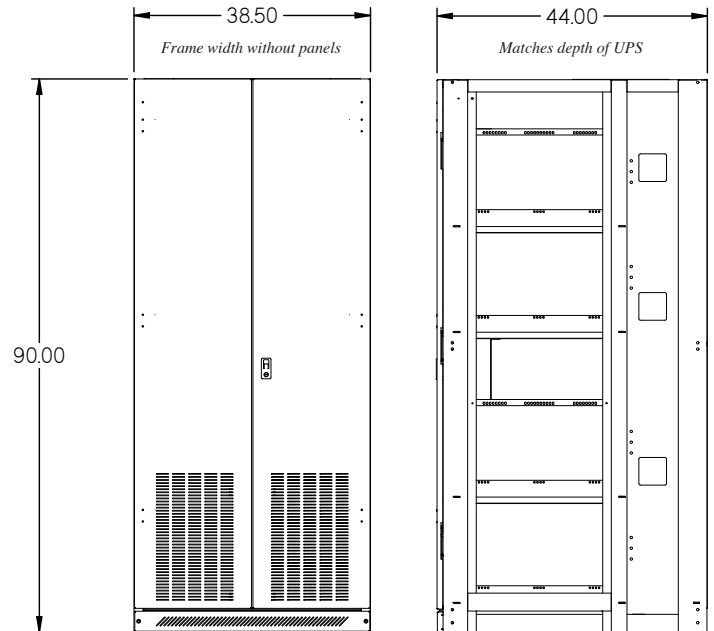
- Floorstands
- Installation of battery monitors
- Spill Containment Pans
- Seismic Anchor Brackets

Top view and bottom view shown with panels. Each panel adds .87" to the width



For applications assistance or system specific drawings of a lineup configuration, please contact the IntraPack Staff.

Front view and side view and dimensions of frame only, no panels all measurements shown in inches



IntraPack®

Not a purchase, an investment.

10817 Sanden Drive • Dallas, Texas 75238-1338
Tel: 214-348-7105 • Fax: 214-348-7115 • Email: sales@intrapack.com