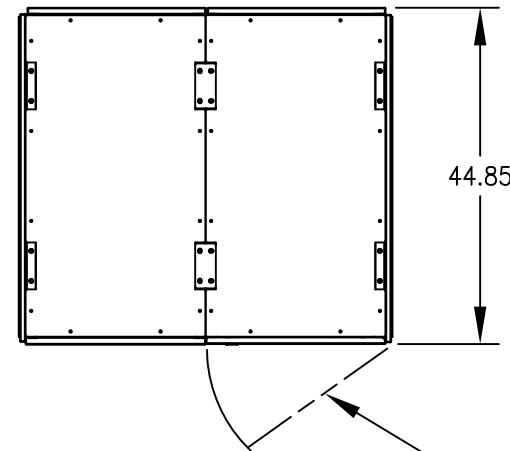


ALL TECHNICAL INFORMATION CONTAINED IN THIS DOCUMENT IS THE EXCLUSIVE PROPERTY OF SCHNEIDER ELECTRIC INDUSTRIES SAS AND MAY NEITHER BE USED NOR DISCLOSED WITHOUT ITS PRIOR WRITTEN CONSENT.

REVISIONS			
REV	DESCRIPTION	DATE	APPROVED
XO	NEW RELEASE	01/29/09	L.A.



TOP VIEW

DOOR SWING 24" @ 150° MAX.

NOTES: UNLESS OTHERWISE SPECIFIED.

- 1.1 DIMENSION FORMAT IS INCHES.
- 1.2 ALL DIMENSIONS ARE TO OUTSIDE EDGE OF THE CABINET, EXCLUDING DOOR LOCK AND ALL HARDWARE.
- 1.3 COLOR: MGE LIGHT GRAY (RAL 9002)
- 1.4 A PHILLIPS SCREWDRIVER IS REQUIRED TO REMOVE PANELS.
- 1.5 OPERATING TEMPERATURE: 86°F (30°C) MAX. RECOMMENDED OPERATING 77°F (25°C).
- 1.6 REFER TO DOCUMENT NO. 9-00038-00 FOR CABLE PREPARATION PROCEDURE FOR FIELD WIRING.
- 1.7 ALL EXTERNAL WIRING SUPPLIED AND CONNECTED BY CUSTOMER. FOLLOW ALL APPLICABLE NEC AND LOCAL ELECTRICAL CODES.
- 1.8 POWER CABLES SHALL BE IN SEPARATE CONDUITS FROM CONTROL AND COMMUNICATION CABLES.
- 1.9 NO REAR ACCESS REQUIRED: 6.0" REAR CLEARANCE REQUIRED WITH SEISMIC BRACKETS OR 0.5" WITHOUT SEISMIC BRACKETS.

1.10 CABINET WEIGHT:

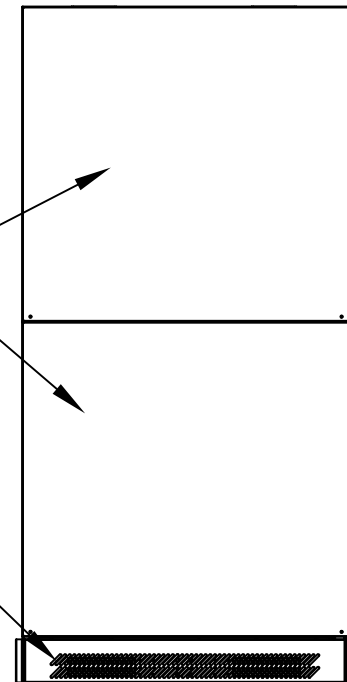
CENTER OF GRAVITY FROM LOWER FRONT CORNER.

MBC	1350 LBS
SIDE CABINET	605 LBS

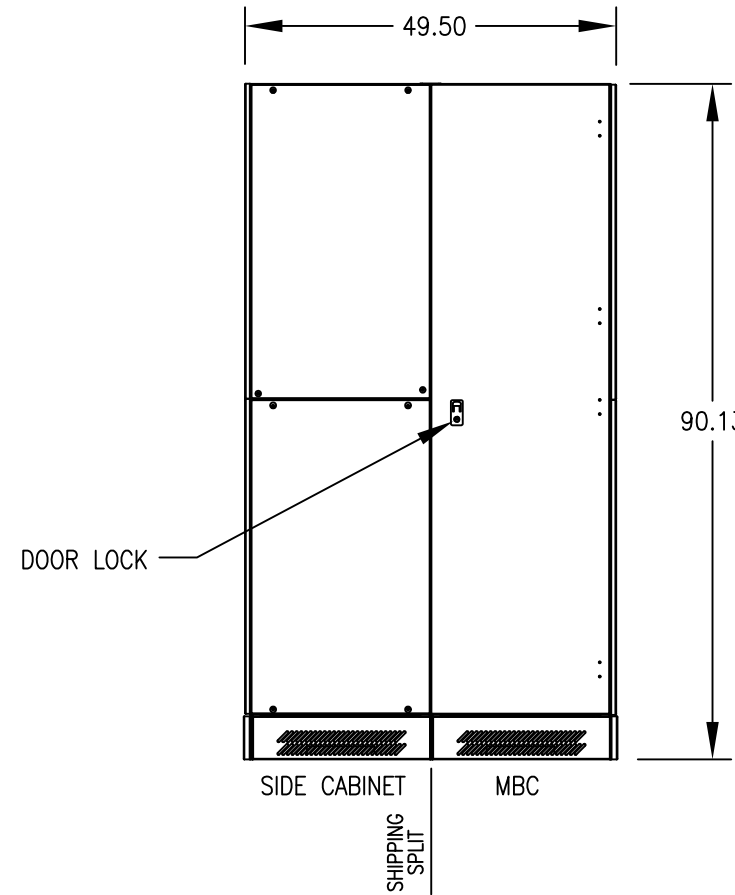
X (WIDTH)	12.0"
Y (HEIGHT)	48.7"
Z (DEPTH)	17.5"

SIDE PANELS

SIDE AND FRONT AIR INTAKE COVERS (SHIPPED WITH UNIT UNMOUNTED)



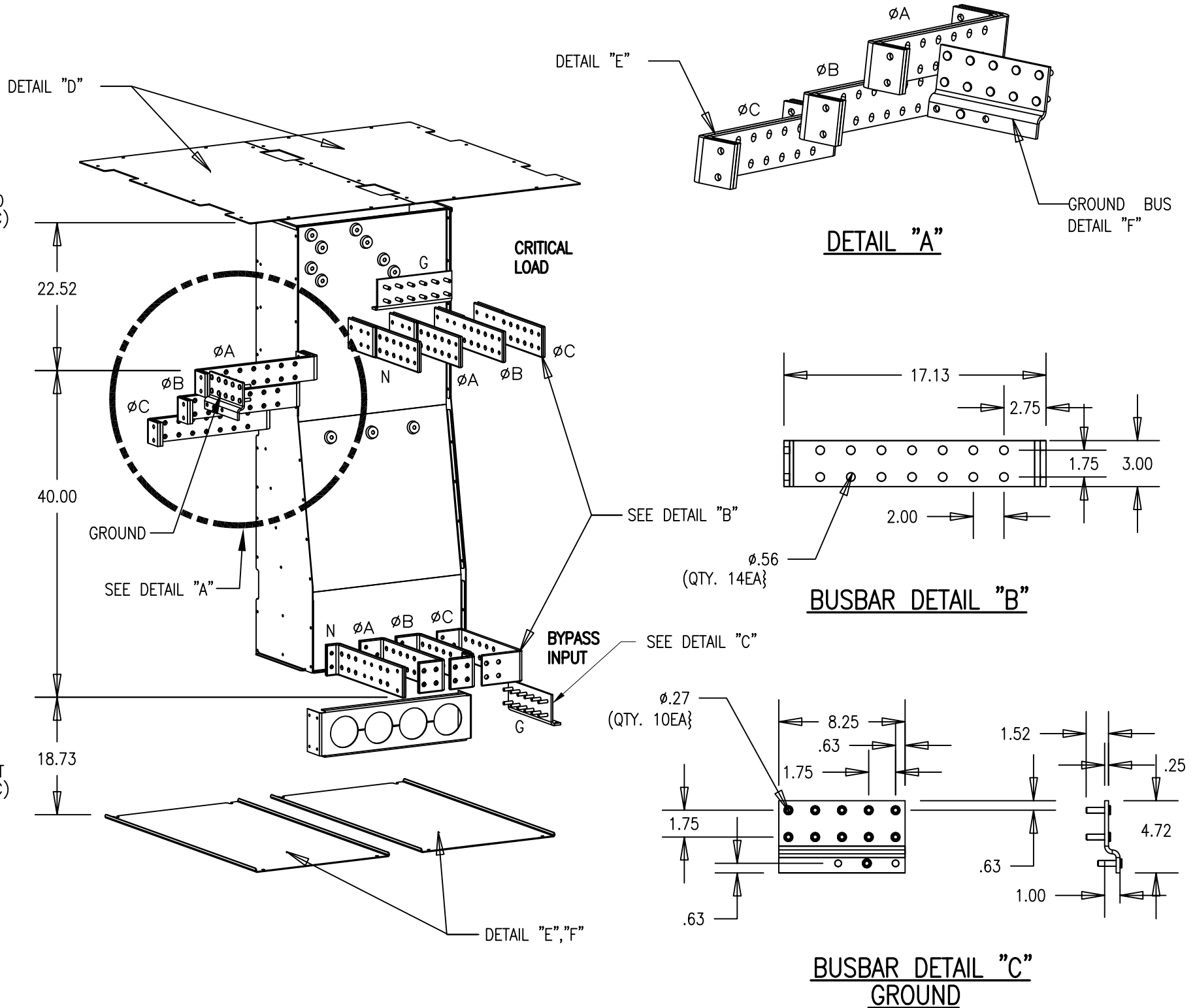
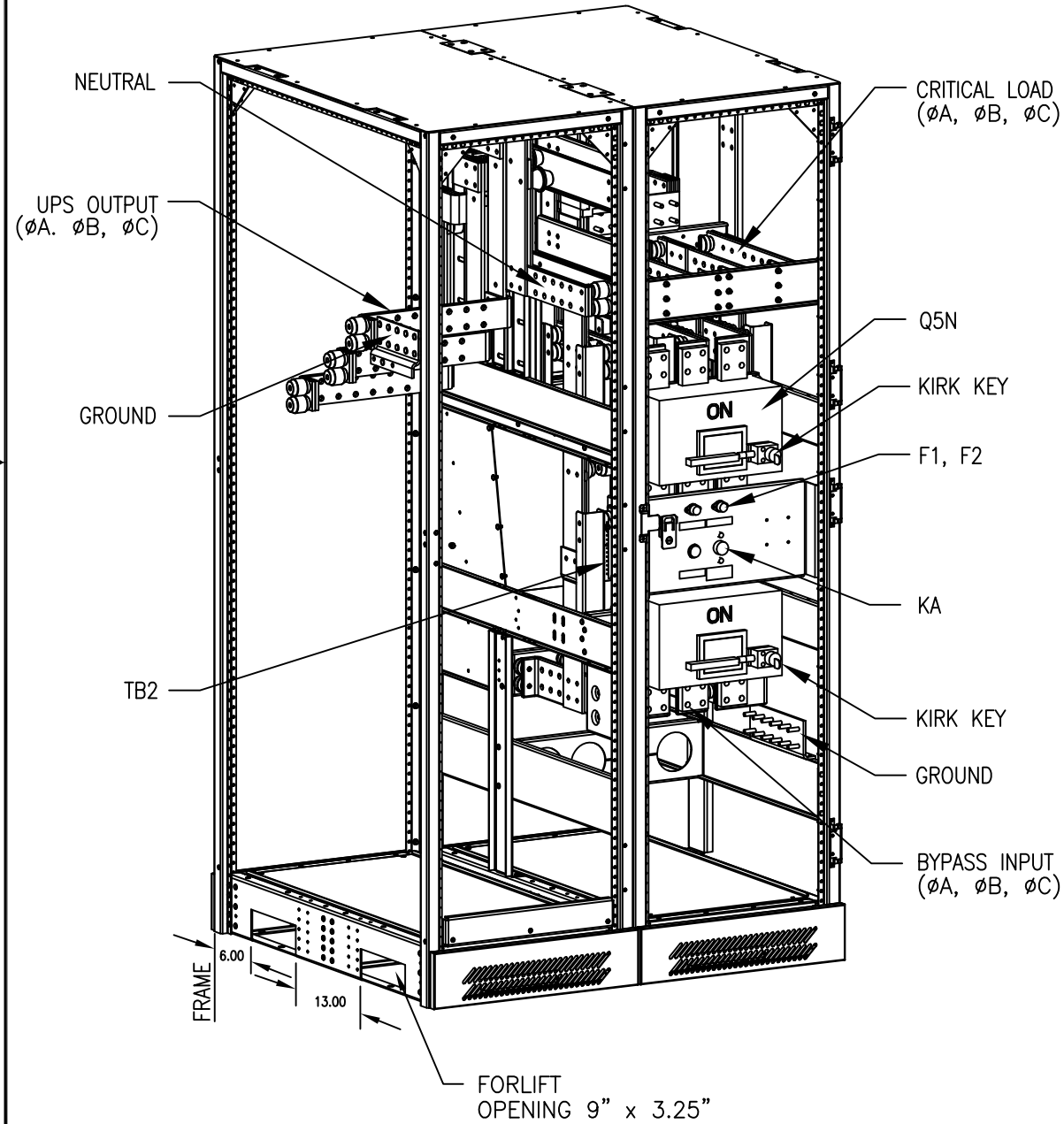
LEFT SIDE VIEW



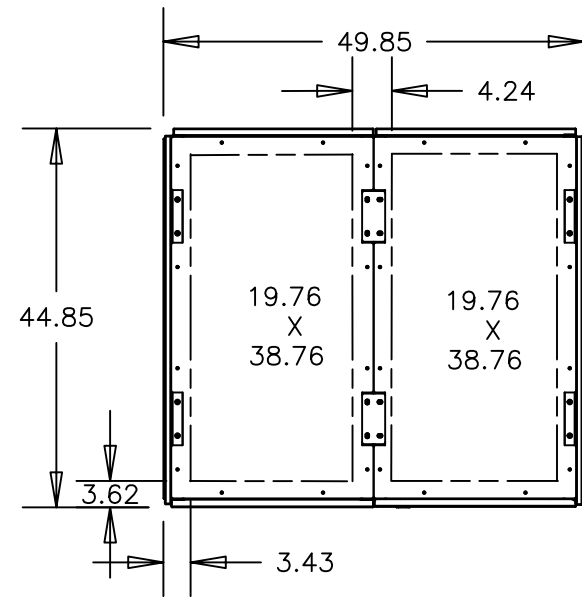
BOTTOM VIEW

CONTRACT NO.		<b>SCHNEIDER ELECTRIC</b> <small>Critical Power &amp; Cooling Service Division          1660 Scenic Avenue          Costa Mesa, CA. 92626 U.S.A.</small>			
APPROVALS	DATE	<b>MGE GALAXY EPS8000 1000/1100KVA          INSTALLATION DRAWING          REMOTE MAINTENANCE BYPASS CABINET</b>			
DRAWN B.KHOLOUSI	01/29/09				
CHECKED L.A.	01/29/09				
ISSUED L.A.	01/29/09	SIZE B	CAGE CODE 9L985	DWG NO. 90-135053-01	REV. XO
DO NOT SCALE DRAWING		SCALE NONE	CAD 90-135053-01_1	SHEET 1 OF 4	

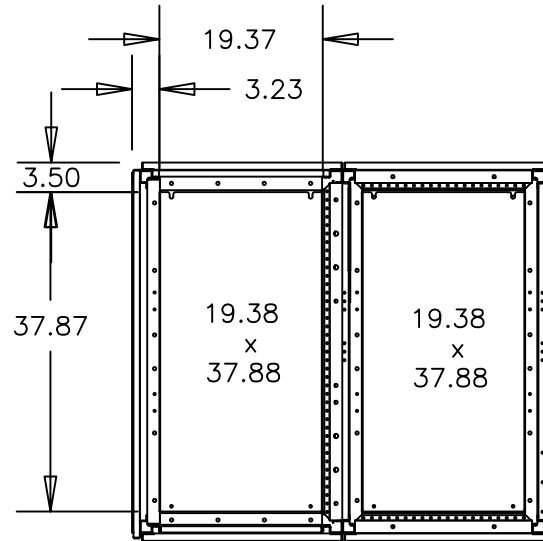
# COMPONENT LOCATION



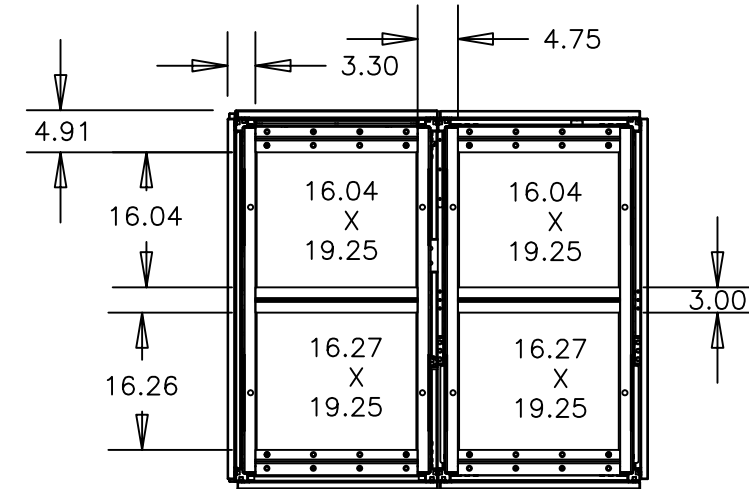
SIZE B	CAGE CODE 9L985	DWG NO. 90-135053-01	REV. X0
SCALE NONE	CAD	90-135053-01_2	SHEET 2 OF 4



TOP ENTRY  
CONDUIT  
LANDING  
DETAIL "D"



BOTTOM EXIT  
CONDUIT  
LANDING  
DETAIL "E"



BOTTOM  
VIEW  
DETAIL "F"

