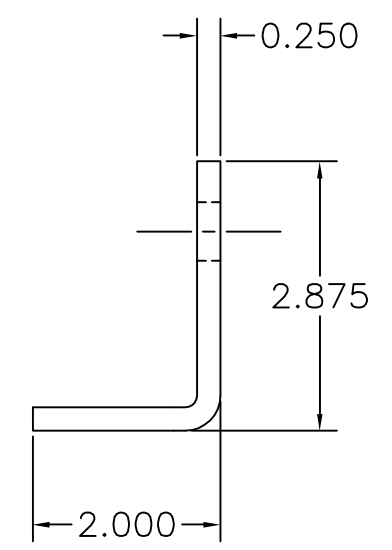
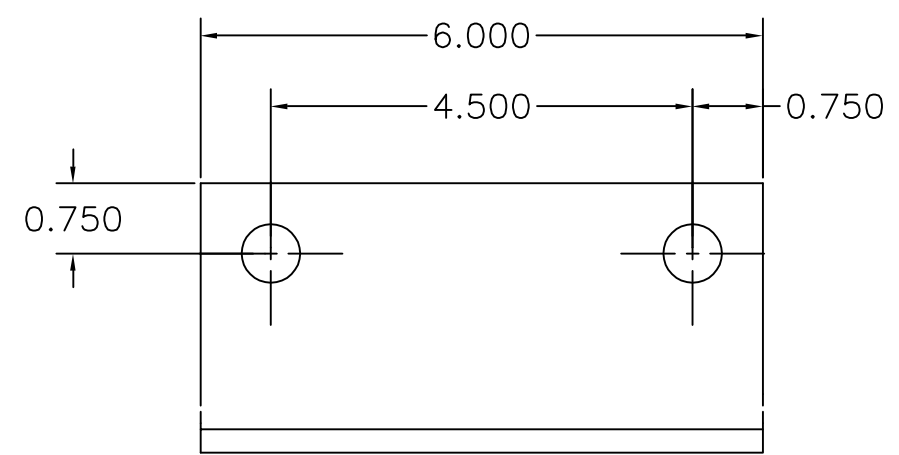
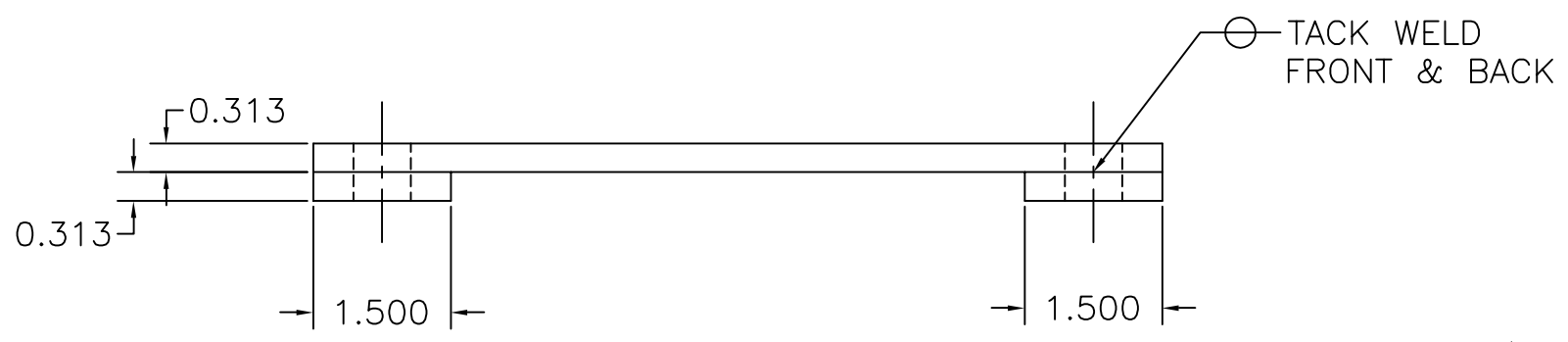
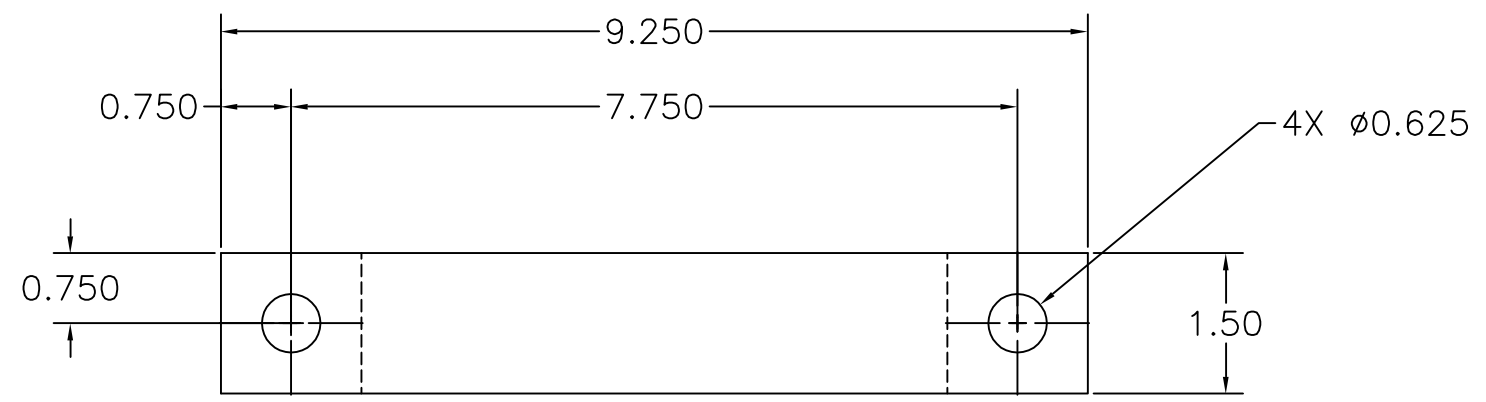


MGE UPS SYSTEMS, INC. CLAIMS PROPRIETARY RIGHTS IN THE MATERIAL DISCLOSED HEREIN. THIS DOCUMENT IS ISSUED FOR ENGINEERING INFORMATION ONLY. IT MAY NOT BE DISCLOSED TO OTHERS NOR MAY IT BE USED FOR MANUFACTURING PURPOSES WITHOUT WRITTEN PERMISSION FROM MGE UPS SYSTEMS, INC.

REVISIONS			
REV	DESCRIPTION	DATE	APPROVED
A00	NEW RELEASE PER ECN-004402	06/15/05	VNE



- NOTES:
1. STAMP PART NO. AND REVISION WHERE SHOWN .12 HIGH.
 2. REMOVE ALL BURRS AND SHARP EDGES.
 3. ALL FORMED DIMENSIONS ARE TO OUTSIDE SURFACES.

UNLESS OTHERWISE SPECIFIED DIMENSIONS ARE IN INCHES AND [MILLIMETERS]. TOLERANCES ARE: DECIMALS [MILLIMETERS] .X=± .1 X=± 2.54 .XX=± .03 X=± .7 .XXX=± .010 XX=± 1 ANGLES ± 0°30' MATERIAL 1/4X6 Steel Bar 5/16X1.5 Steel Bar FINISH PMS, BLACK 3C	CONTRACT NO.		MGE UPS Systems, Inc. 1660 Scenic Avenue Costa Mesa, CA. 92626 U.S.A.			
	APPROVALS	DATE				
	DRAWN	V. N.EALEY	06/15/05	SEISMIC BRACKET EPS 8000		
	CHECKED	V.N.EALEY	06/15/05			
ISSUED	V.N.EALEY	06/15/05	SIZE	CAGE CODE	DWG NO.	REV.
DO NOT SCALE DRAWING			B	9L985	71-134453-01	A00
			SCALE	1/2	CAD Agile: D71-134453-01	SHEET 1 OF 1