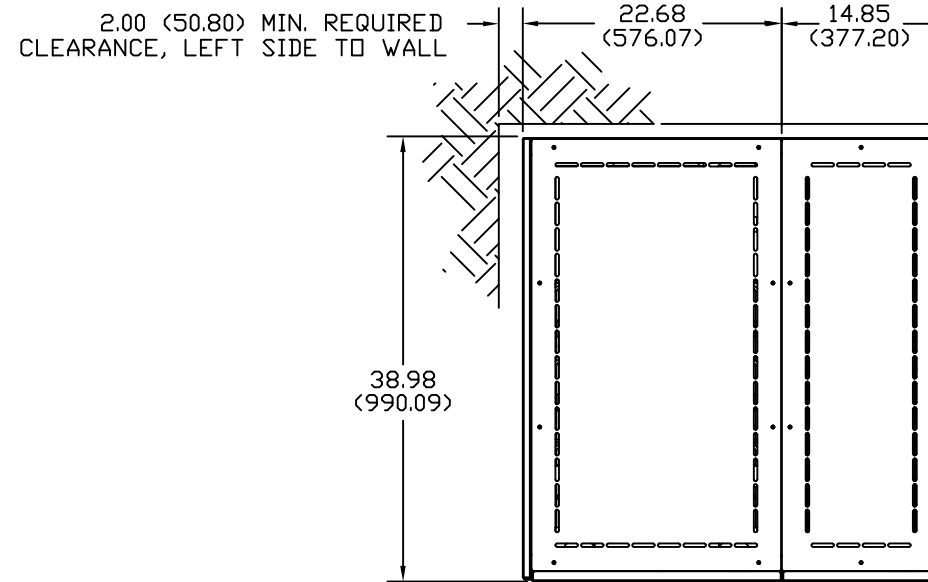
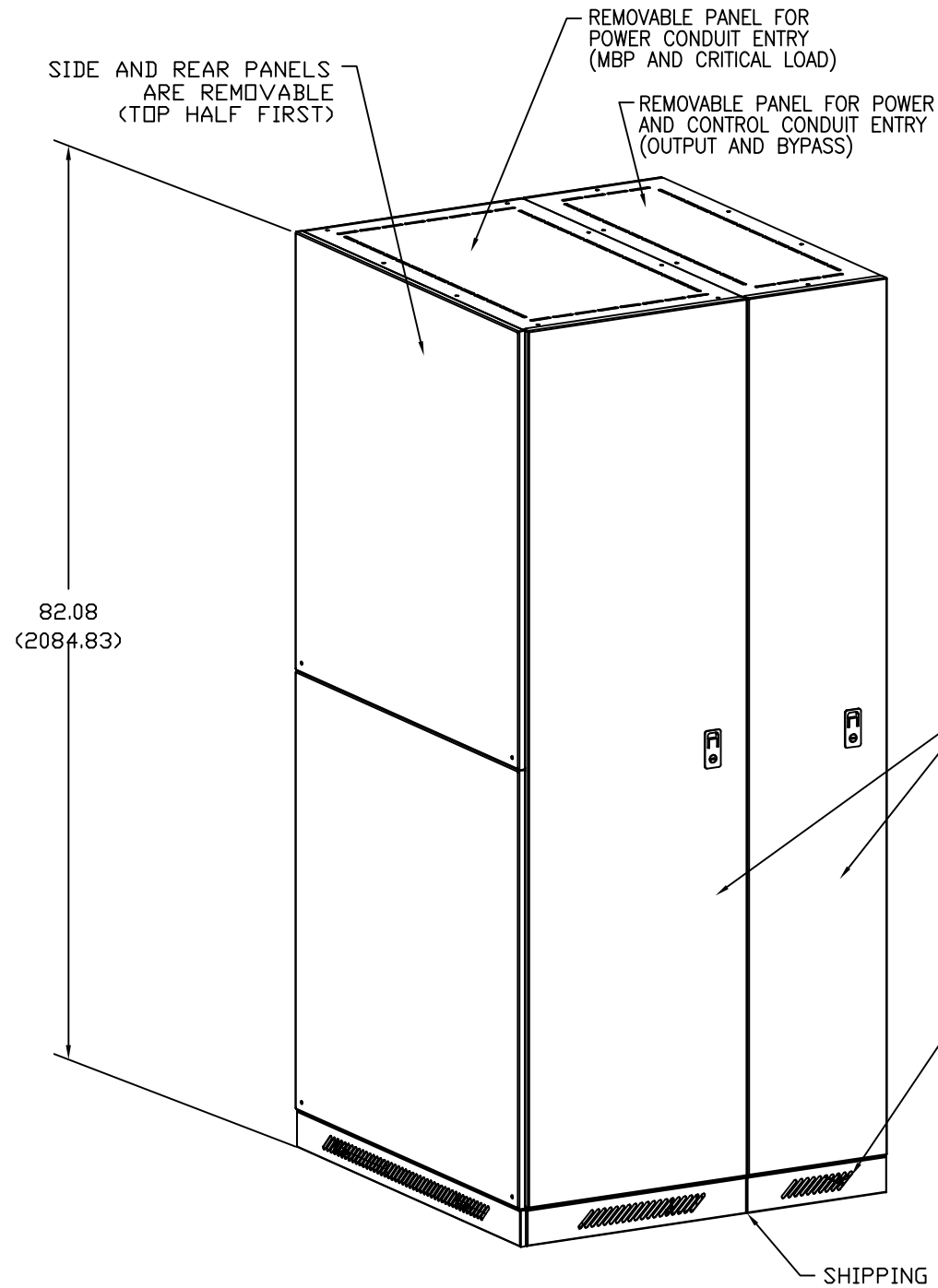


MGE UPS SYSTEMS, INC. CLAIMS PROPRIETARY RIGHTS IN THE MATERIAL DISCLOSED HEREIN. THIS DOCUMENT IS ISSUED FOR ENGINEERING INFORMATION ONLY. IT MAY NOT BE DISCLOSED TO OTHERS NOR MAY IT BE USED FOR MANUFACTURING PURPOSES WITHOUT WRITTEN PERMISSION FROM MGE UPS SYSTEMS, INC.

REVISIONS			
REV	DESCRIPTION	DATE	APPROVED
A00	NEW RELEASE, REV 1-LINE ECN-005167	11/19/07	VNE
B00	ADD ST WIRES SHT 4 ECN-005712	02/14/08	VNE



NO REAR CLEARANCE REQUIRED EXCEPT FOR 50 KAIC INSTALLATIONS AND ABOVE (REFER TO DOC. NO. 90-132253-00)

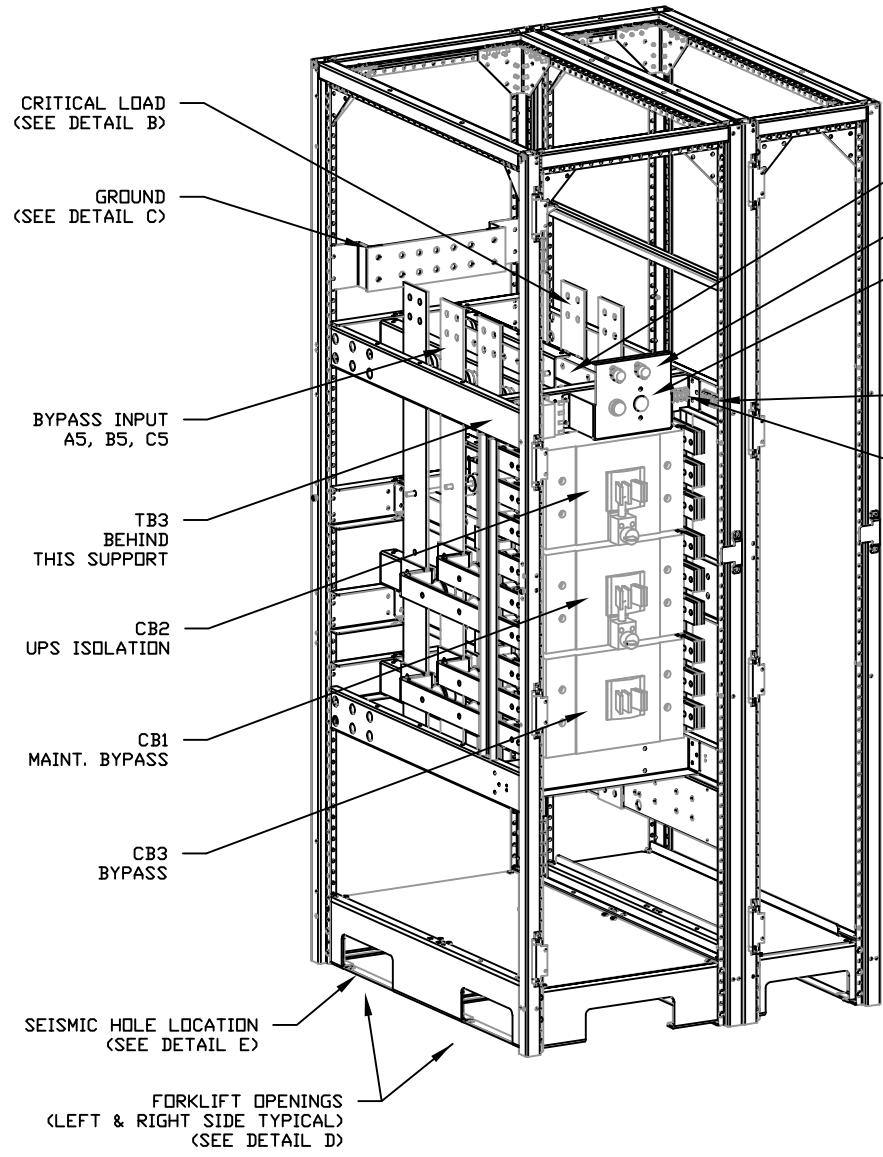
1. DIMENSION FORMAT IS INCHES (MM). ALL DIMENSIONS ARE TO OUTSIDE EDGES OF THE CABINET, EXCLUDING HARDWARE, INTERLOCK, ETC.
2. A PHILLIPS SCREWDRIVER IS REQUIRED TO REMOVE EXTERNAL PANELS.
3. COLOR: MGE LIGHT GRAY (RAL 9002). AIR INTAKE COVERS (RAL 7038).
4. OPERATING TEMPERATURE: 32°F (0°C) MIN. TO 95°F (35°C) MAX. RECOMMENDED OPERATING RANGE: 6-0°F (15°C) TO 77°F (25°C).
5. AIR EXHAUST: NONE.
6. HEAT GENERATION: NEGLIGIBLE.
7. WEIGHT:

	LBS	KG
MBP	770	350
EMPTY CAB	270	120
8. REFER TO MGE DOCUMENT NO. 9-00038-00 FOR CABLE PREPARATION PROCEDURE FOR FIELD WIRING. REFER TO DOCUMENT NO. 90-132253-00 FOR CABLE RESTRAINTS.
9. ALL EXTERNAL WIRING SUPPLIED AND CONNECTED BY CUSTOMER REFER TO THE INSTALLATION MANUAL FOR MORE DETAILS. CONTROL WIRES SHOULD BE ROUTED AWAY FROM HIGH VOLTAGE.
10. REMOVE NEUTRAL-TO-GROUND BOND IN THE UPS WHERE APPLICABLE.
11. AVAILABLE RATINGS: 800A, 1000A
REF ASSY: 72-132426-70, 71, 74 AND 76.

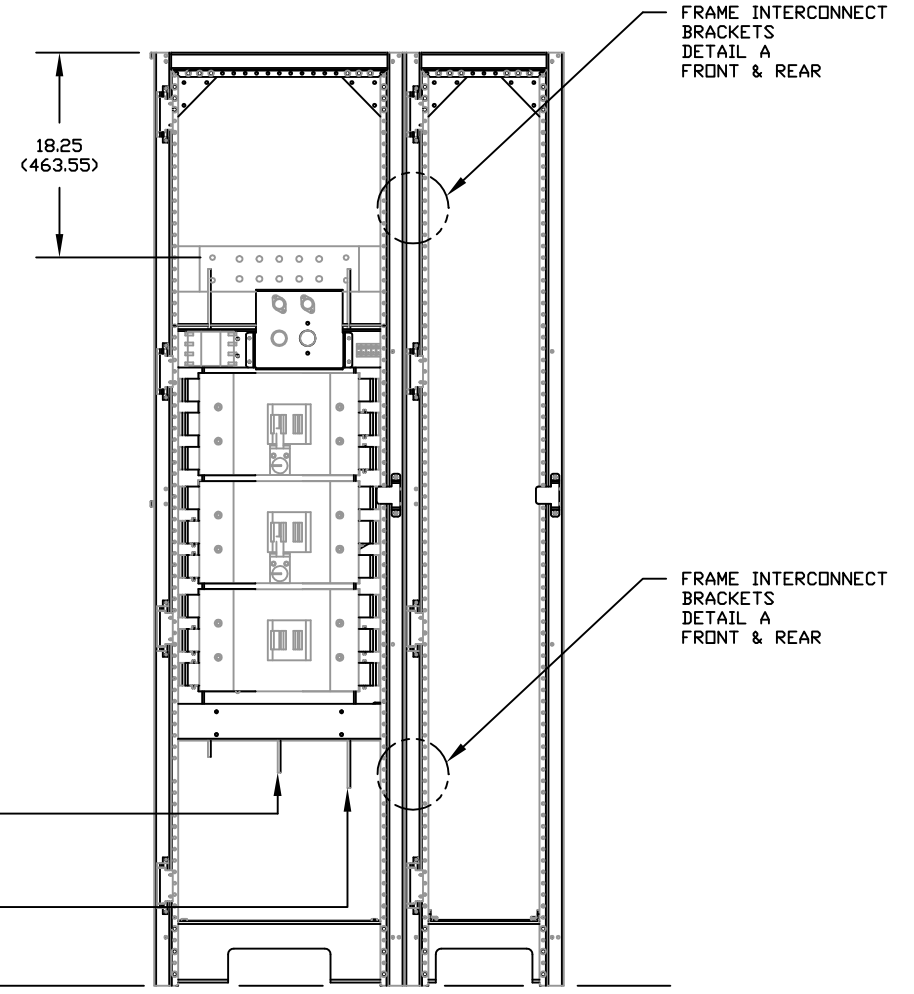
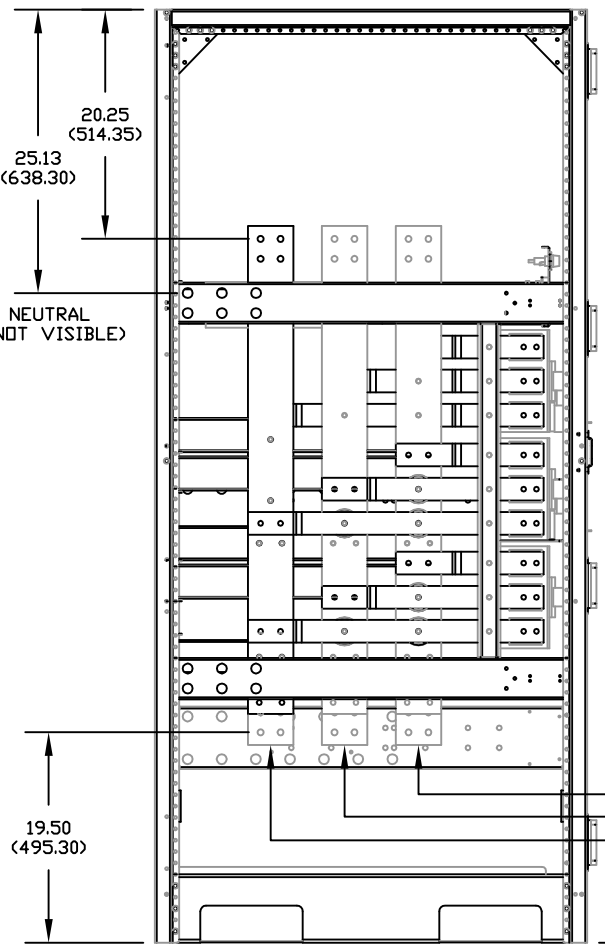
NOTES: UNLESS OTHERWISE SPECIFIED.

RECOMMENDED AISLE SPACE = 60.00(1525)

<p>UNLESS OTHERWISE SPECIFIED DIMENSIONS ARE IN INCHES AND [MILLIMETERS].</p> <p>TOLERANCES ARE:</p> <table border="0"> <tr> <td>DECIMALS</td> <td>[MILLIMETERS]</td> </tr> <tr> <td>.X=±</td> <td>X.=±</td> </tr> <tr> <td>.XX=±</td> <td>.X=±</td> </tr> <tr> <td>.XXX=±</td> <td>.XX=±</td> </tr> </table> <p>ANGLES ±</p> <p>MATERIAL</p> <p>FINISH</p> <p>NOTE: 3</p>	DECIMALS	[MILLIMETERS]	.X=±	X.=±	.XX=±	.X=±	.XXX=±	.XX=±	CONTRACT NO.		<p>MGE MGE UPS Systems, Inc. UPS SYSTEMS 1660 Scenic Avenue Costa Mesa, CA. 92626 U.S.A.</p>	
	DECIMALS	[MILLIMETERS]										
	.X=±	X.=±										
	.XX=±	.X=±										
.XXX=±	.XX=±											
APPROVALS	DATE	<p>INSTALLATION DRAWING REMOTE MBC 555 TO 625KVA EPS8000</p>										
DRAWN H.DINH	04/21/03											
CHECKED LPG	04/21/03											
ISSUED LNA	04/21/03	SIZE B	CAGE CODE 9L985	DWG NO. 90-132426-74	REV. B00							
DO NOT SCALE DRAWING		SCALE NONE	CAD Agile: D90-132426-74	SHEET 1 OF 4								



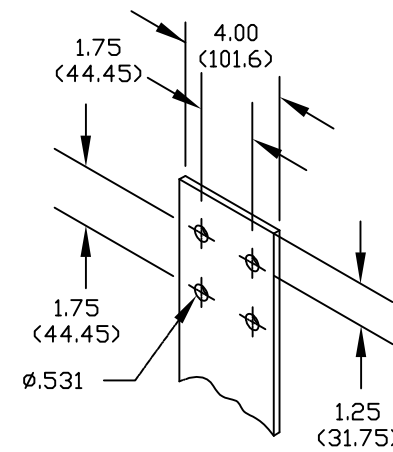
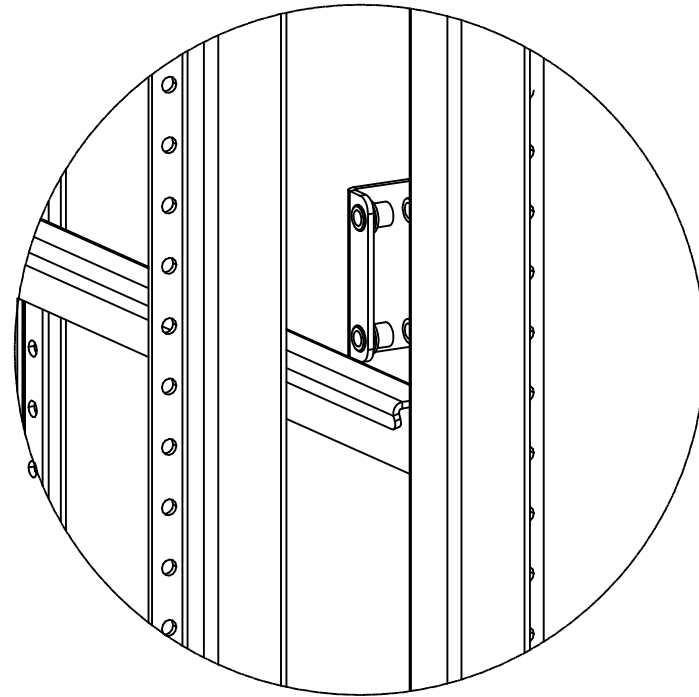
- NEUTRAL (SEE DETAIL C) (NOT VISIBLE)
- FUSE (QTY 2) F1, F2
- ELECTRICAL INTERLOCK KS
- TB2 (DETAIL F)
- TB1 (DETAIL F)



WARNING:
DO NOT FORKLIFT
FROM THE FRONT

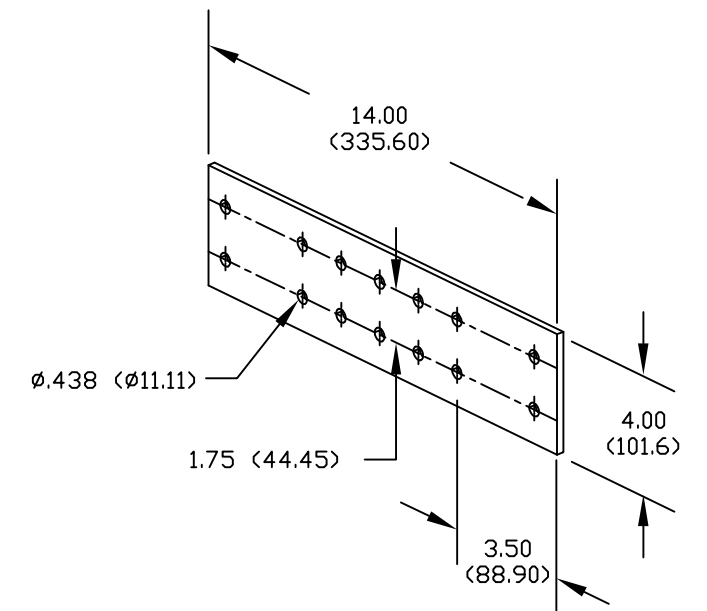
COMPONENT LOCATION
ALL EXTERNAL PANELS REMOVED FOR CLARITY

SIZE	CAGE CODE	DWG NO.	REV.
B	9L985	90-132426-74	B00
SCALE	NONE	CAD Agile: D90-132426-74	SHEET 2



CRITICAL LOAD & MAINTENANCE BYPASS

DETAIL B



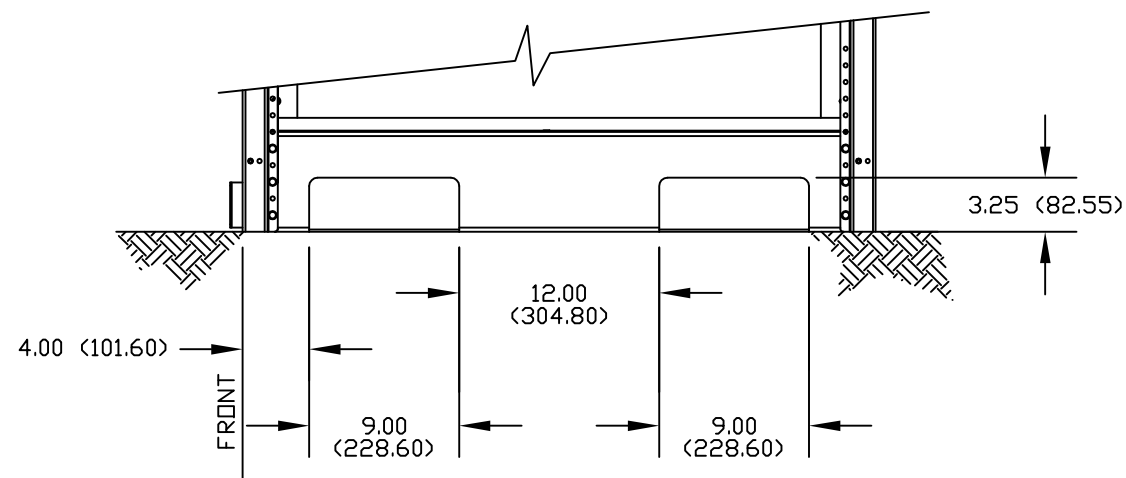
GROUND & NEUTRAL

DETAIL C

FRAME INTERCONNECT BRACKET

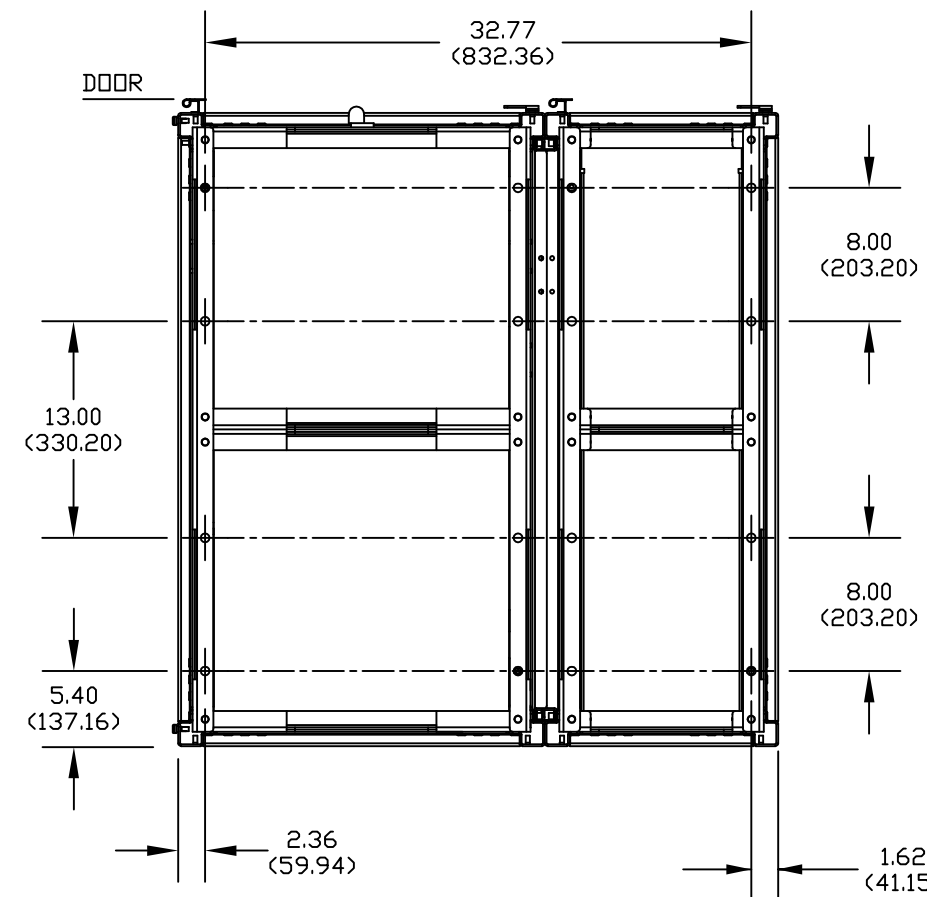
DETAIL A

NOTE: INSTALL TWO (2)-1/4-20 BOLTS PER BRACKET FROM ADJOINING FRAME



FORK LIFT CUTOUT

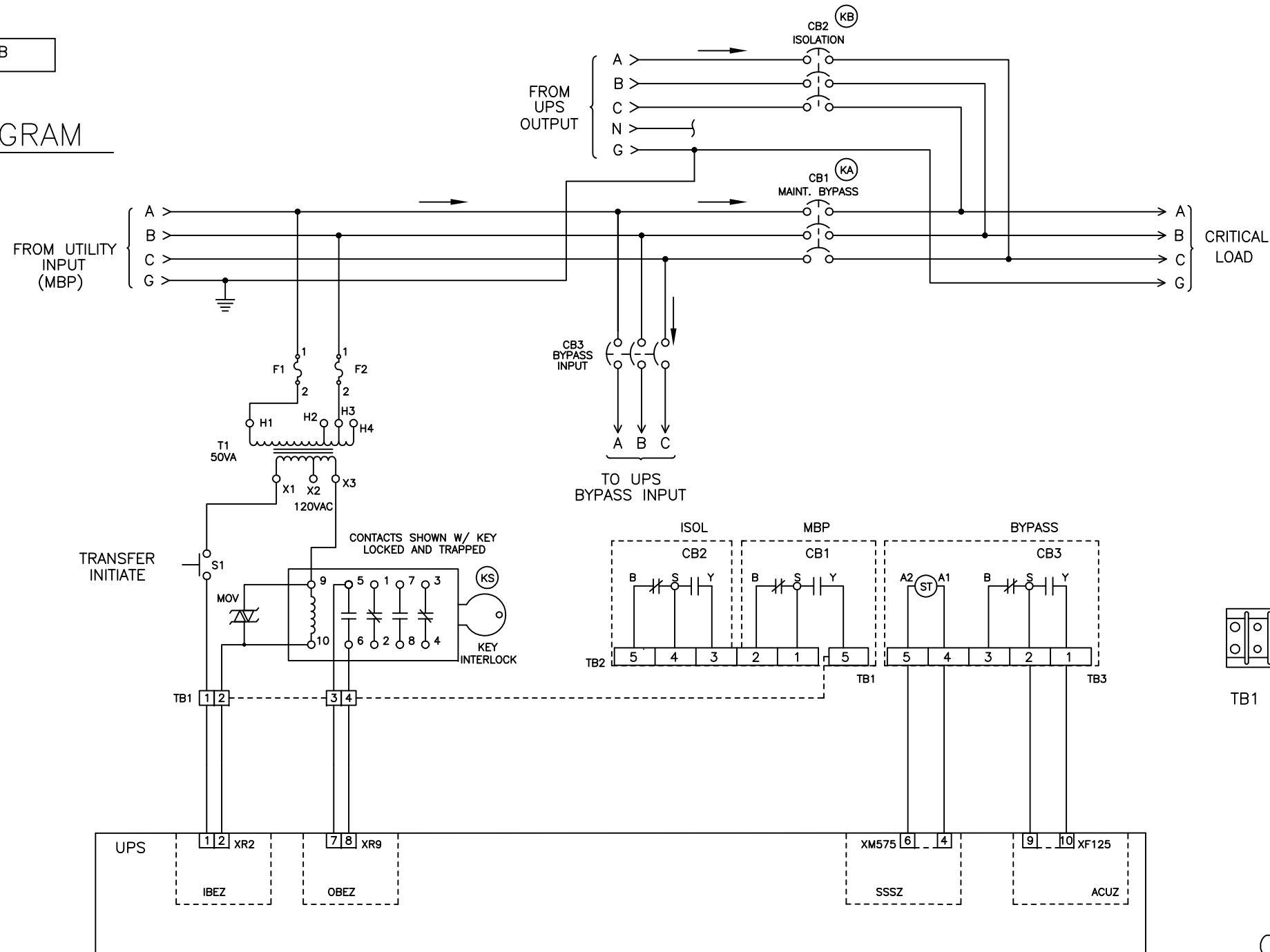
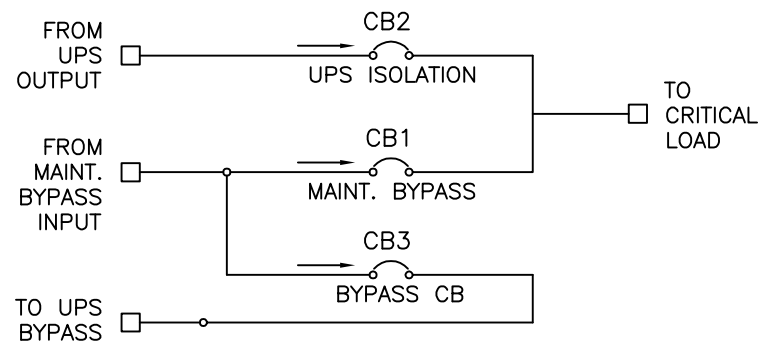
SIDE CUTOUTS
DETAIL D



SEISMIC BOLTING

TOP VIEW
DETAIL E

SIZE	CAGE CODE	DWG NO.	REV.
B	9L985	90-132426-74	B00
SCALE	NONE	CAD Agile: D90-132426-74	SHEET 3



CONTROL WIRE ROUTING

DETAIL F
RECOMMENDED: 10-32 RING LUGS

⚠ ALL CONNECTIONS ARE PROVIDED AND CONNECTED BY CUSTOMER.
RECOMMENDED WIRES: #16 AWG, 600V.

NOTES: UNLESS OTHERWISE SPECIFIED

SIZE	CAGE CODE	DWG NO.	REV.
B	9L985	90-132426-74	B00
SCALE	NONE	CAD Agile: D90-132426-74	SHEET 4