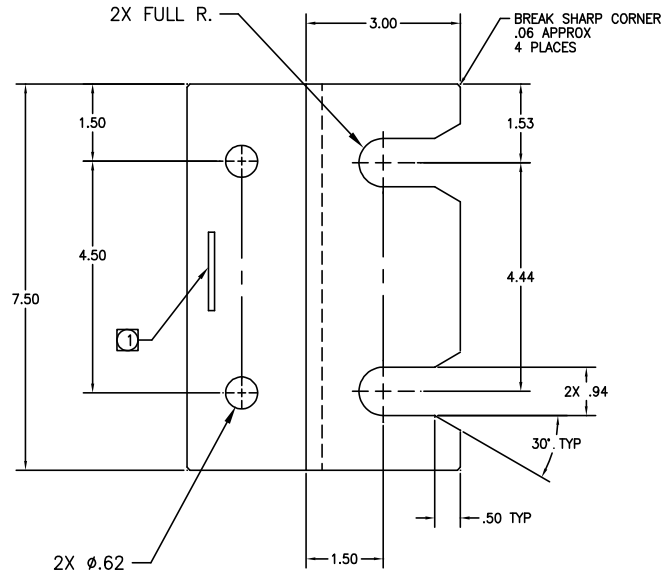


EPE TECHNOLOGIES, INC. (EPE) CLAIMS PROPRIETARY RIGHTS IN THE MATERIAL DISCLOSED HEREON. THIS DOCUMENT IS ISSUED FOR ENGINEERING INFORMATION ONLY. IT MAY NOT BE DISCLOSED TO OTHERS NOR MAY IT BE USED FOR MANUFACTURING PURPOSES WITHOUT WRITTEN PERMISSION FROM EPE.




REVISIONS				
ZONE	REV.	DESCRIPTION	DATE	APPROVED
	A00	NEW RELEASE ECN 274-33	5-4-95	
	A01	REVISED FINISH ECN 283-98	9-13-96	JM

5. PRIME & PAINT ALL SURFACES 04-80030-97
EPE MED GRAY.
ALTERNATE FINISH: POWDER COAT
COLOR TO BE RAL 7038.

4. BEND RADIUS: .25
3. ALL FORMED DIMENSIONS ARE TO OUTSIDE SURFACES.
2. REMOVE ALL BURRS AND SHARP EDGES.

1. STAMP PART NO. AND REVISION LETTER ONLY APPROX. WHERE SHOWN .12 HIGH.

NOTES: UNLESS OTHERWISE SPECIFIED.

UNLESS OTHERWISE SPECIFIED DIMENSIONS ARE IN INCHES TOLERANCES ARE DECIMALS ANGLES XX ±.03 ±1° XXX ±.010	CONTRACT NO.		 EPE TECHNOLOGIES, INC. A subsidiary of Spac & Company 1680 SCENIC AVENUE COSTA MESA, CALIFORNIA 92626	
	APPROVALS	DATE		
MATERIAL 5/16 STL PLATE ASTM-A36	DRAWN RUDY RANGEL	4/27/95	BRACKET, SEISMIC EPS 6000	
FINISH 04-80030-97 MED. GRAY	CHECKED			
	ISSUED		SIZE B	PSCM NO. 9L985
			DWG. NO. 71-130370-00	REV. A01
			SCALE NONE	CAD FILE: 7113\370001
			SHEET 1	1