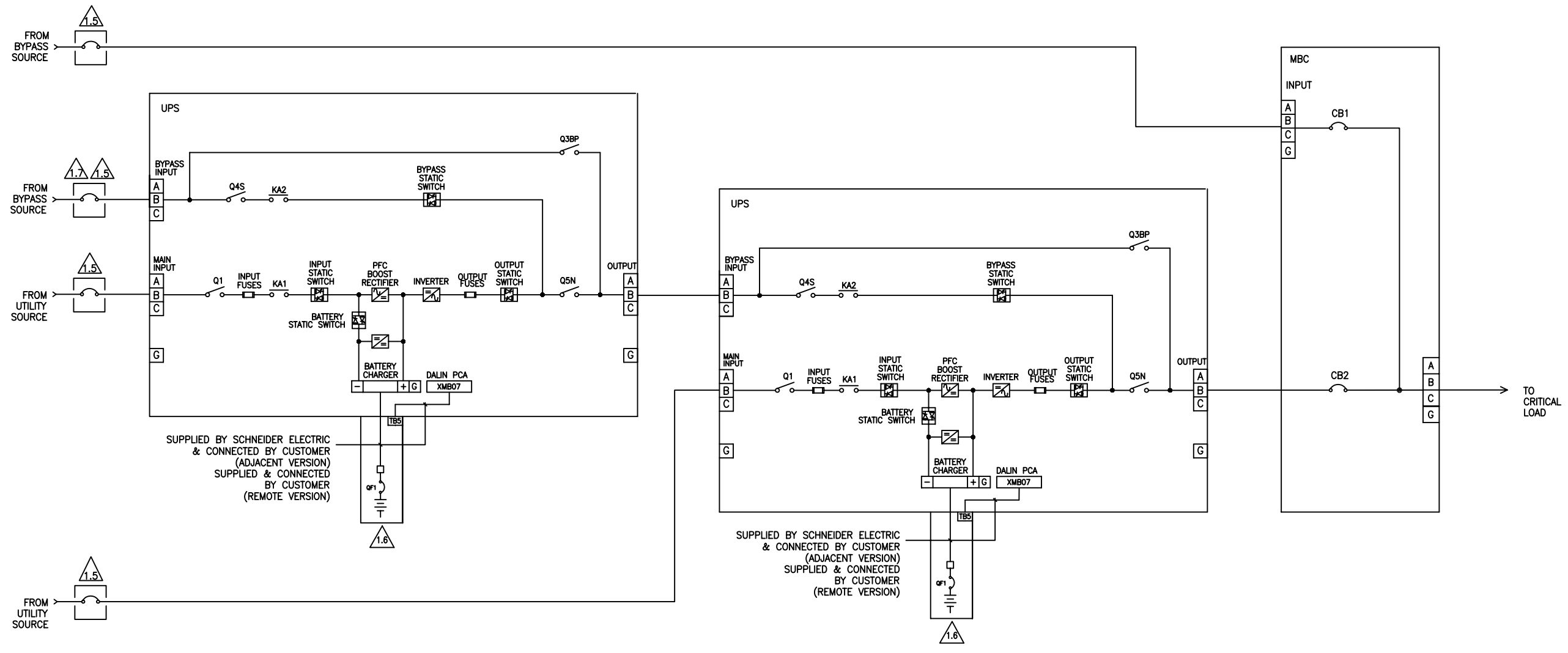


ALL TECHNICAL INFORMATION CONTAINED IN THIS DOCUMENT IS THE EXCLUSIVE PROPERTY OF SCHNEIDER ELECTRIC INDUSTRIES SAS AND MAY NEITHER BE USED NOR DISCLOSED WITHOUT ITS PRIOR WRITTEN CONSENT.

REVISIONS			
REV	DESCRIPTION	DATE	APPROVED
A00	NEW RELEASE	02/12/09	I.K.



SUPPLIED BY SCHNEIDER ELECTRIC & CONNECTED BY CUSTOMER (ADJACENT VERSION)
 SUPPLIED & CONNECTED BY CUSTOMER (REMOTE VERSION)

SUPPLIED BY SCHNEIDER ELECTRIC & CONNECTED BY CUSTOMER (ADJACENT VERSION)
 SUPPLIED & CONNECTED BY CUSTOMER (REMOTE VERSION)

NOTES: UNLESS OTHERWISE SPECIFIED

- 1.1 FOLLOW ALL APPLICABLE NEC & LOCAL ELECTRICAL CODES.
- 1.2 ALL EXTERNAL WIRING BY CUSTOMER.
- 1.3 POWER & CONTROL CABLES SHALL BE IN SEPARATE CONDUITS.
- 1.4 CUSTOMER IS RESPONSIBLE FOR CONNECTING ALL SCHNEIDER ELECTRIC SUPPLIED CABLES.
- 1.5 UPSTREAM PROTECTIVE DEVICE REQUIRED. PROVIDED BY CUSTOMER.
- 1.6 ONE CABINET SHOWN. FOR UP TO FOUR (4) BATTERY CABINET CONNECTIONS, REFER TO DRAWINGS 90-174701-00 OR 90-174701-01.
- 1.7 SHOULD FEED FROM THE SAME SOURCE AS THE MBC.

CONTRACT NO.		SCHNEIDER ELECTRIC Critical Power & Cooling Service Division 1660 Scenic Avenue Costa Mesa, CA. 92626 U.S.A.		
APPROVALS	DATE	SINGLE LINE ISOLATED REDUNDANT MGE GALAXY 5000		
DRAWN B.KHOLOUSI	12/16/08			
CHECKED M.M.	12/16/08			
ISSUED I.K.	12/16/08			
DO NOT SCALE DRAWING		SIZE B CAGE CODE 9L985 SCALE NONE	DWG NO. 90-174781-00 CAD 90-174781-00	REV. A00 SHEET 1 OF 1