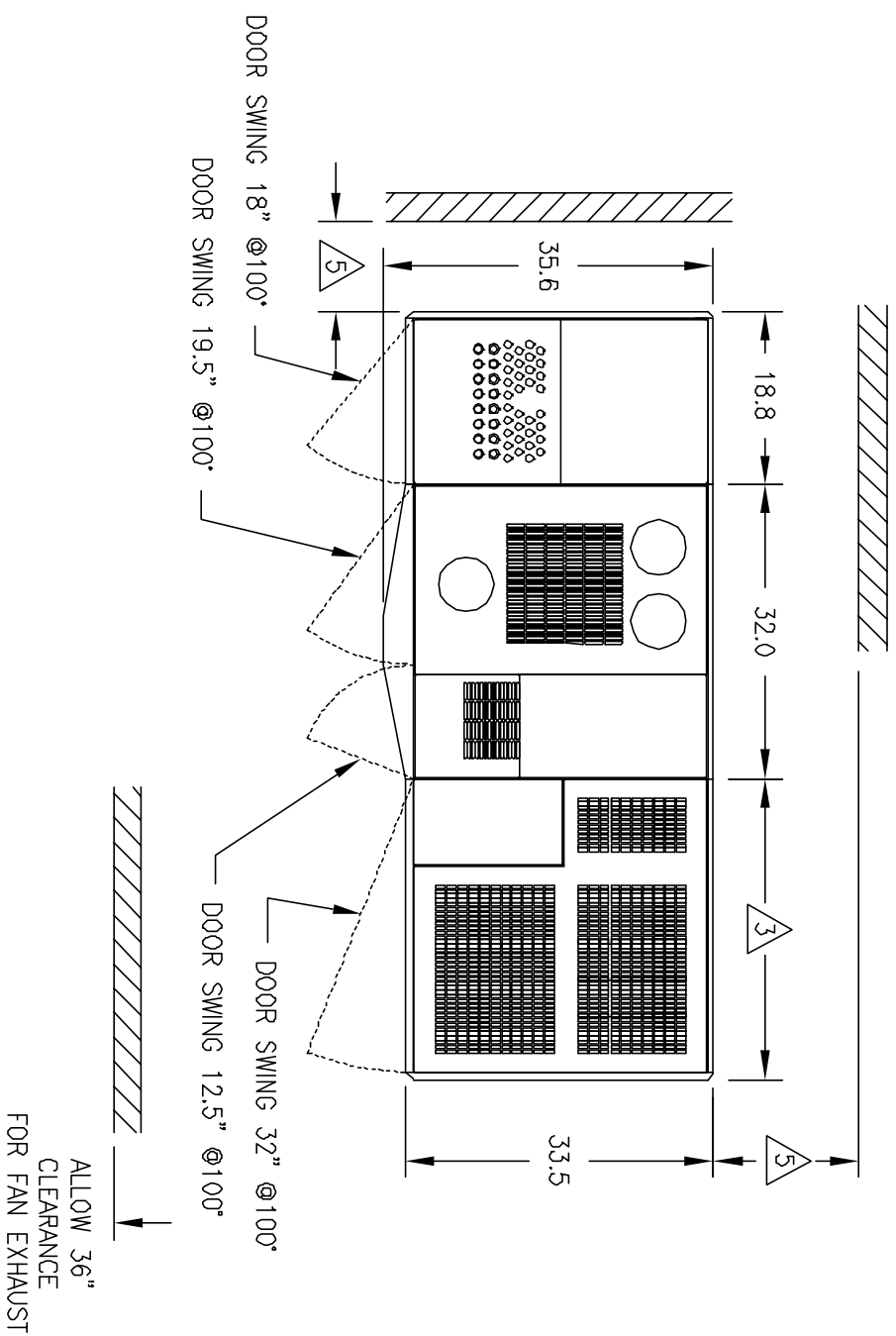


MGE UPS SYSTEMS, INC. CLAIMS PROPRIETARY RIGHTS IN THE MATERIAL DISCLOSED HEREIN. THIS DOCUMENT IS ISSUED FOR ENGINEERING INFORMATION ONLY. IT MAY NOT BE DISCLOSED TO OTHERS NOR MAY IT BE USED FOR MANUFACTURING PURPOSES WITHOUT WRITTEN PERMISSION FROM MGE UPS SYSTEMS, INC.



REVISIONS			
REV	DESCRIPTION	DATE	APPROVED
A00	RELEASE PER ECN-004234	2/15/05	I.K.
A01	REVISED PER ECN-004568	03/08/06	IK

DWG NO. 90-173031-00 SH 1 REV. A01

NOTES: UNLESS OTHERWISE SPECIFIED.

1. DIMENSION FORMAT IS IN INCHES.

2. REFER TO EACH INDIVIDUAL CABINET INSTALLATION DRAWING INDICATED BELOW.

A. 90-173020-00 UPS INSTALLATION.

B. 90-173021-00 BATTERY CABINET INSTALLATION.

C. 90-173022-00 DISTRIBUTION CABINET INSTALLATION.

3. OPTIONAL UP TO FOUR (4) BATTERY CABINETS. THEY CAN BE ADJACENT OR STAND ALONE VERSIONS. EACH ADJACENT CABINET IS 25.8"W OR 32.8"W WITH ONE OUTSIDE PANEL. EACH STAND ALONE CABINET IS 26.5"W OR 33.5"W.

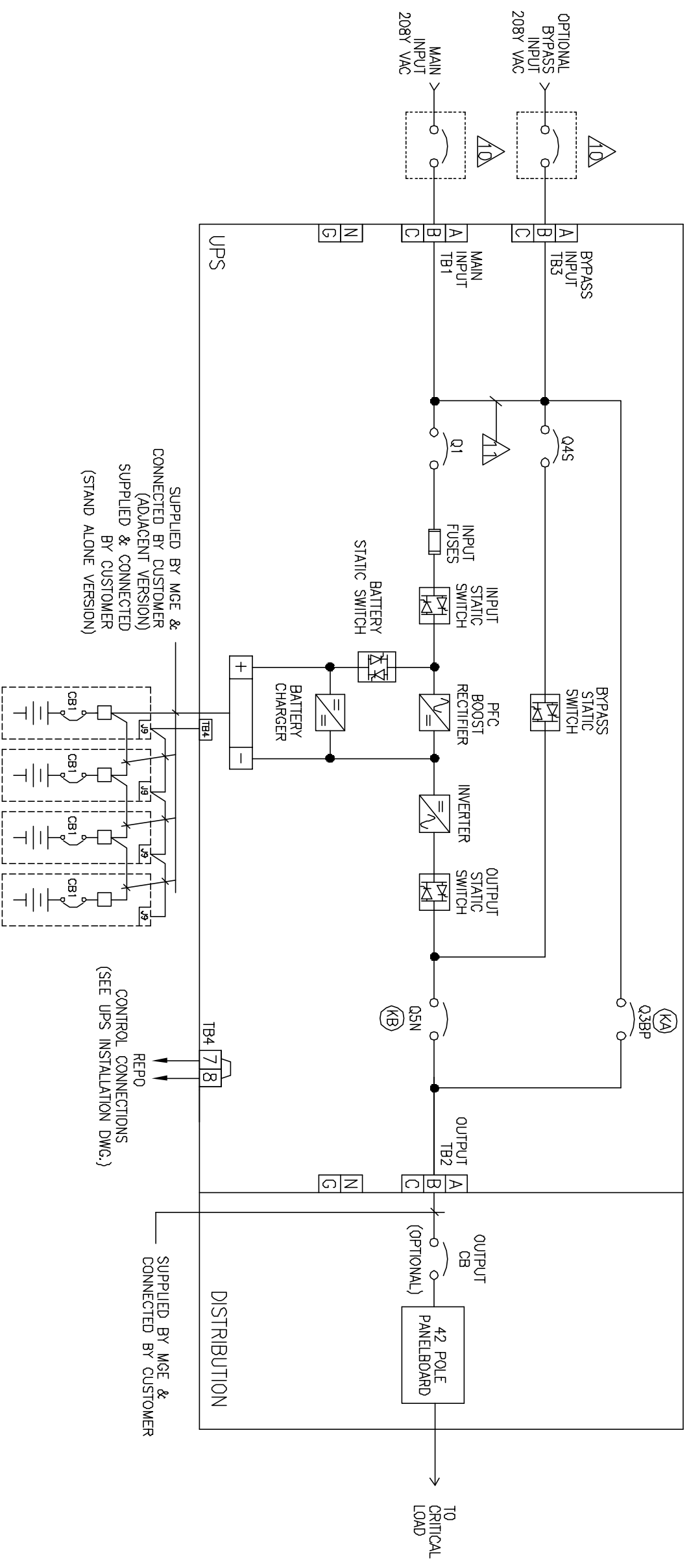
4. CUSTOMER IS RESPONSIBLE FOR CONNECTING ALL MGE SUPPLIED CABLES.

5. 1.0" MINIMUM CLEARANCE TO WALL REQUIRED. 6.0" SIDE CLEARANCE REQUIRED WITH SEISMIC BRACKETS.

6. CABINETS ARE ATTACHED TOGETHER USING C-BRACKETS.

UNLESS OTHERWISE SPECIFIED DIMENSIONS ARE IN INCHES AND [MILLIMETERS]. TOLERANCES ARE:		[MILLIMETERS]	
X=±	XX=±	X=±	XX=±
XXX=±	XXXX=±	XXX=±	XXXX=±
ANGLES ±			
MATERIAL			
FINISH			
CONTRACT NO.		APPROVALS	
DRAWN H.DO		DATE	
CHECKED I.K.		10/20/04	
ISSUED I.K.		10/20/04	
DO NOT SCALE DRAWING		SCALE N/A	
MGE UPS Systems, Inc. 1660 Scenic Avenue Costa Mesa, CA. 92626 U.S.A.		MGE SYSTEMS	
SYSTEM INSTALLATION UPS, BATTERY AND DISTRIBUTION GALAXY 4000 40-75KVA		CAGE CODE 91985	
DWG NO. 90-173031-00		REV. A01	
SHEET 1 OF 4			

GALAXY 4000 UPS SYSTEM WITH INTERNAL MBC, BATTERY AND DISTRIBUTION
SINGLE LINE DIAGRAM

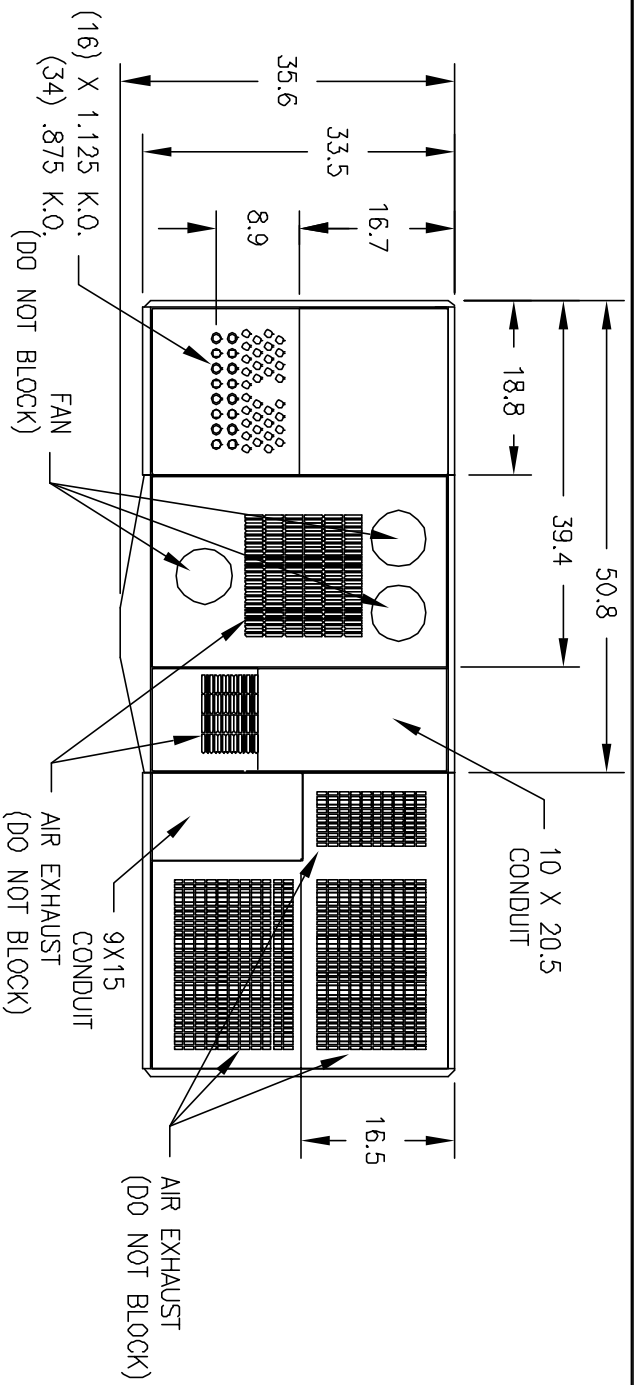


NOTES: UNLESS OTHERWISE SPECIFIED.

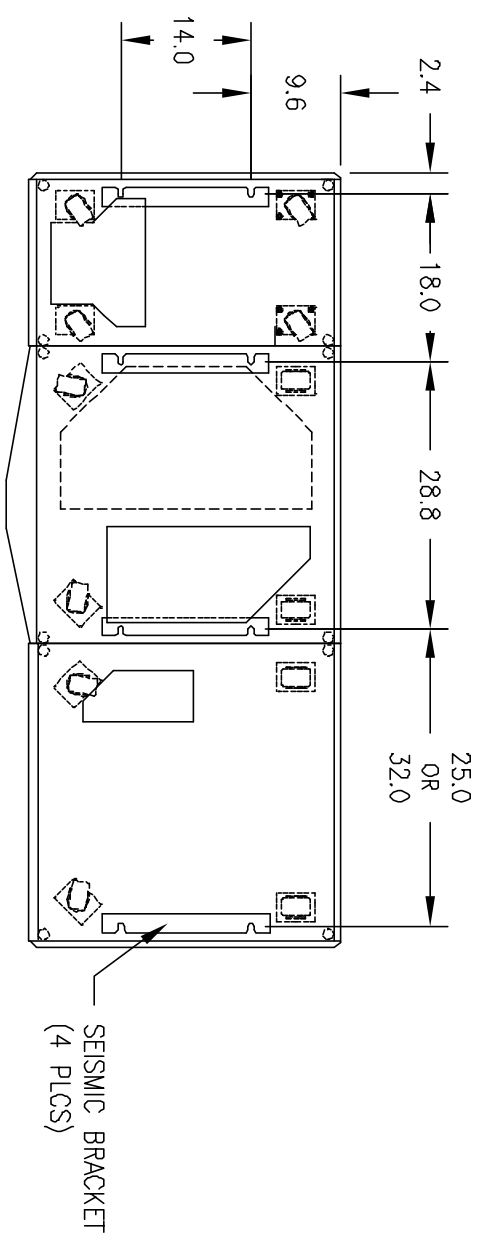
7. FOLLOW ALL APPLICABLE NEC AND LOCAL ELECTRICAL CODES.
8. ALL EXTERNAL WIRING BY OTHERS.
9. POWER AND CONTROL CABLES SHALL BE IN SEPARATE CONDUITS.
10. UPSTREAM PROTECTIVE DEVICE REQUIRED. PROVIDED BY OTHERS.
11. PROVIDED WITH SINGLE INPUT.

12. CABINET WEIGHTS: UPS: 40/50KVA: 1060 LBS, 65/75KVA: 1235 LBS.
BATTERY: REFER TO BATTERY CABINET INSTALLATION DRAWING 90-173021-00.
DISTRIBUTION: 330 LBS.

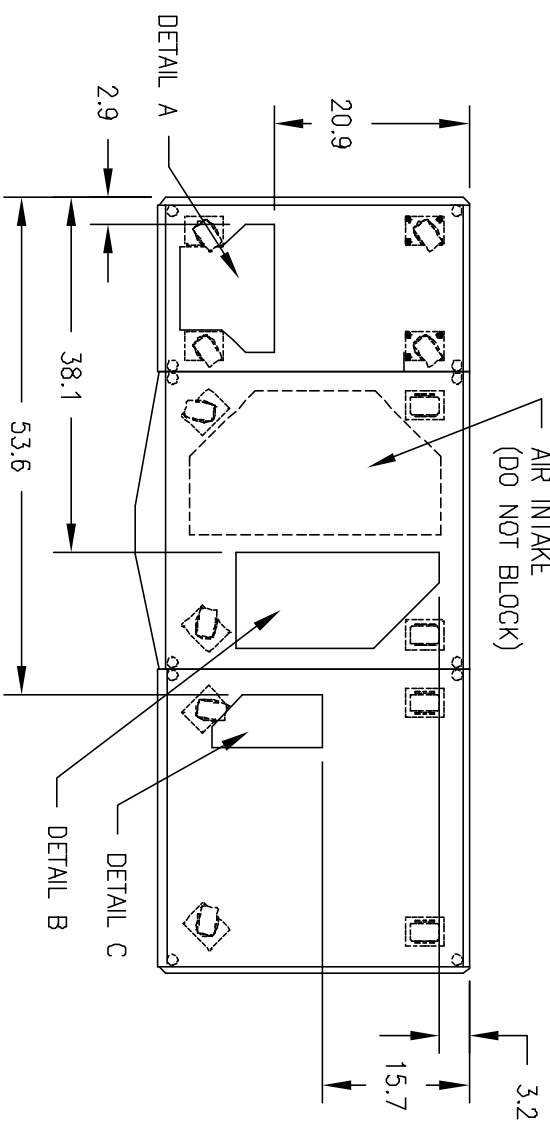
SIZE	CAGE CODE	DWG NO.	REV.
B	9L985	90-173031-00	A01
SCALE	NONE	CAD	SHEET 2



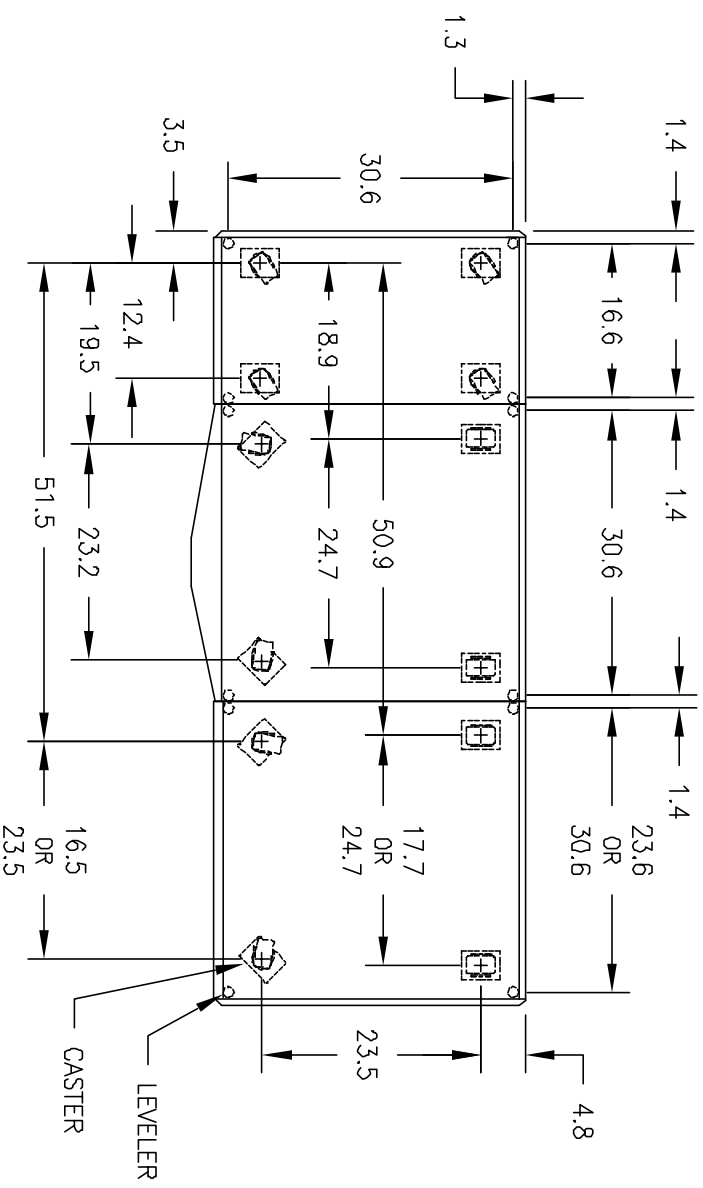
TOP ENTRY CONDUIT LOCATIONS



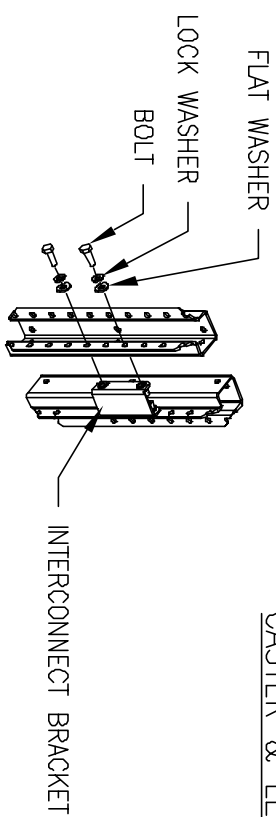
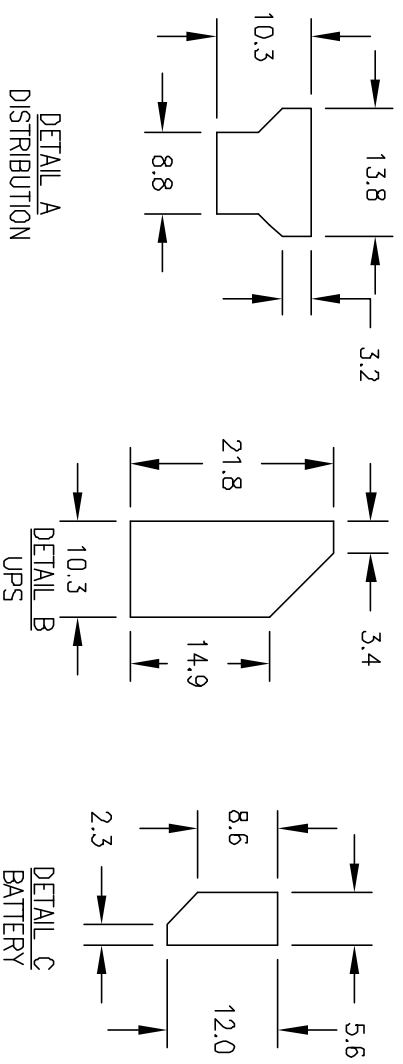
SEISMIC BRACKET LOCATIONS



BOTTOM ENTRY CONDUIT LOCATIONS



CASTER & LEVELER LOCATIONS



DETAIL CABINET INTERCONNECT BRACKET (PRE-ATTACHED TO L.H. SIDE OF BATTERY CABINET, AND R.H. SIDE OF DISTRIBUTION CABINET)

SIZE	GAGE CODE	DWG NO.	REV.
B	9L985	90-173031-00	A01
SCALE	NONE	CAD	SHEET 4