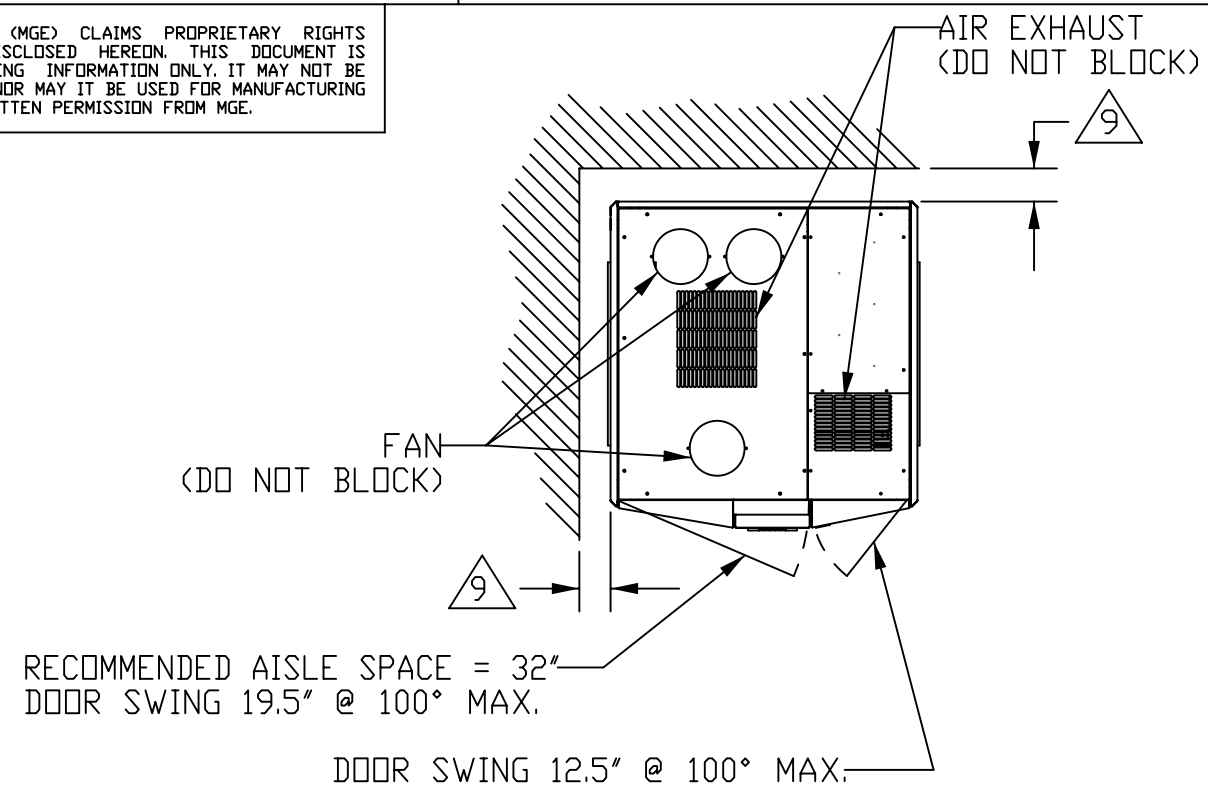


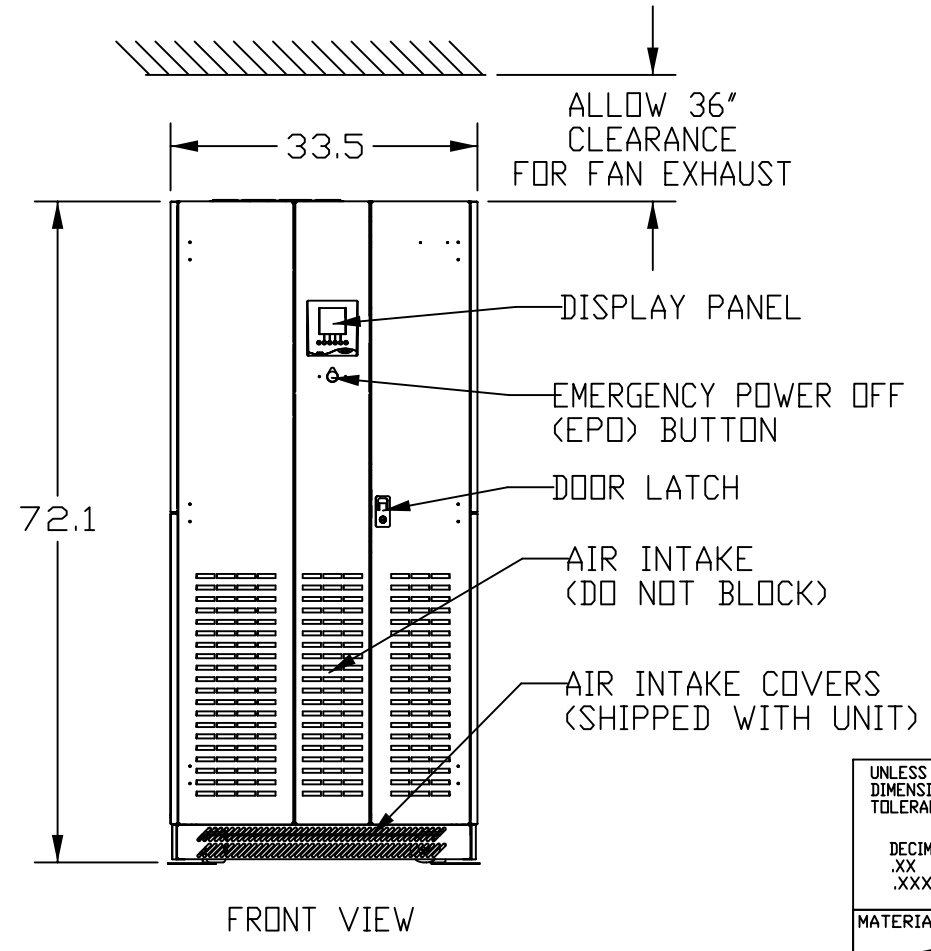
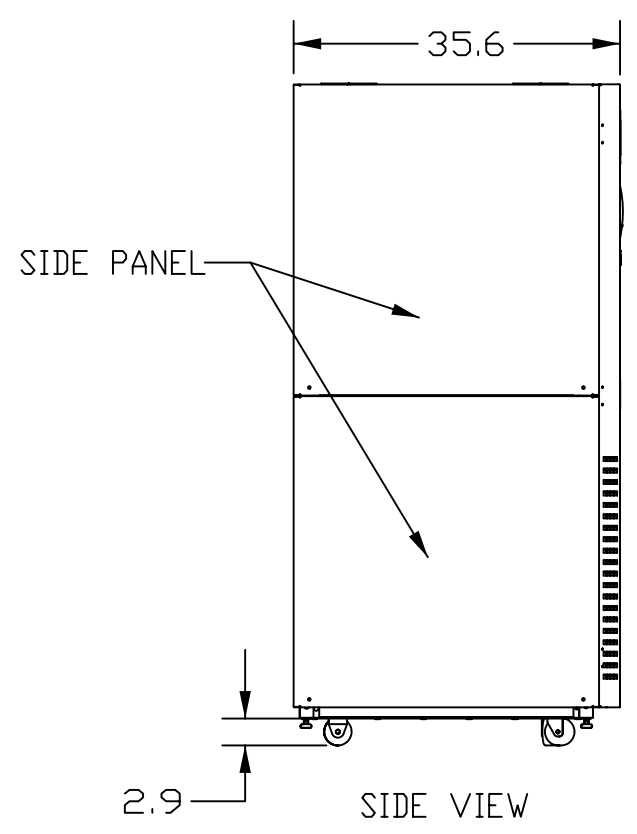
MGE UPS SYSTEMS, INC. (MGE) CLAIMS PROPRIETARY RIGHTS IN THE MATERIAL DISCLOSED HEREON. THIS DOCUMENT IS ISSUED FOR ENGINEERING INFORMATION ONLY. IT MAY NOT BE DISCLOSED TO OTHERS NOR MAY IT BE USED FOR MANUFACTURING PURPOSES WITHOUT WRITTEN PERMISSION FROM MGE.

REVISIONS				
ZONE	REV	DESCRIPTION	DATE	APPROVED
	A01	REVISED PER ECN-004538	03/08/06	I.K.
	B00	ADDED TELPAC CARD	04/10/06	VNE SD
	B01	REVISED PER ECN-005328	05/02/07	H.D



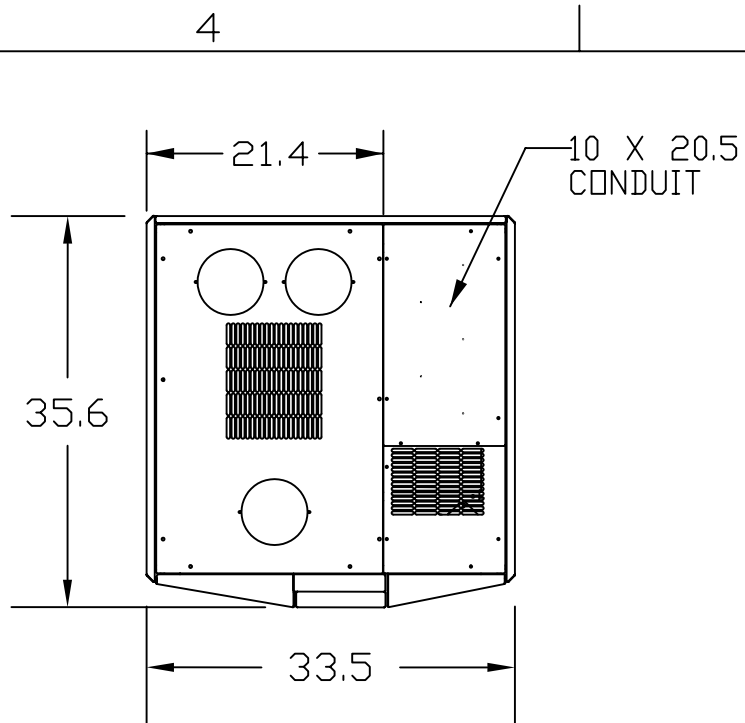
- NOTES: UNLESS OTHERWISE SPECIFIED,
- DIMENSION FORMAT IS INCHES.
 - ALL DIMENSIONS ARE TO THE OUTSIDE EDGE OF THE CABINET EXCLUDING DOOR LATCH AND ALL HARDWARE.
 - COLOR: LIGHT GRAY, TIGER DRYLAC 249/12170.
 - OPERATING TEMPERATURE: 32°F (0°C) MIN. TO 86°F (30°C). RECOMMENDED OPERATING RANGE: 60°F (15°C) TO 77°F (25°C).
 - REFER TO MGE DOCUMENT NUMBER 9-00038-00 FOR CABLE PREPARATION PROCEDURE FOR FIELD WIRING.
 - ALL EXTERNAL WIRING SUPPLIED AND CONNECTED BY CUSTOMER.
 - A PHILLIPS SCREWDRIVER IS REQUIRED TO REMOVE INTERNAL AND EXTERNAL PANELS.
 - REFER TO APPLICABLE SYSTEM INSTALLATION DRAWING TO DETERMINE CABINET LINE UP. DRAWING NO. 90-173030-00 OR 90-173031-00.
 - 1.0" MINIMUM CLEARANCE TO WALL REQUIRED.
 - 6.0" SIDE CLEARANCE REQUIRED WITH SEISMIC BRACKETS.
 - CABINET PROVIDED WITH FRONT SWIVEL CASTERS AND REAR RIGID CASTERS. CABINET WILL NOT MOVE SIDeways.
 - AIR EXHAUST: 40/50KVA: 1300 CFM (37 M³/MIN), 65/75KVA: 1800 CFM (51 M³/MIN),
 - APPROXIMATE OF CENTER GRAVITY (MEASURED FROM LOWER LEFT FRONT CORNER OF CABINET):

RATING	WIDTH (IN.)	HEIGHT (IN.)	DEPTH (IN.)
40/50 KVA	13.5	34.8	16.8
65/75 KVA	13.5	33.8	16.8

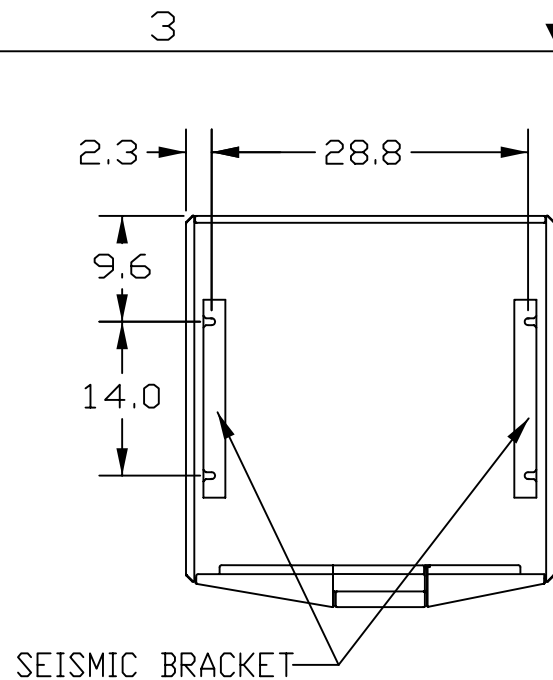


UNLESS OTHERWISE SPECIFIED DIMENSIONS ARE IN INCHES TOLERANCES ARE: DECIMALS .XX ±.03 .XXX ±.010 ANGLES ± 1/2°	CONTRACT NO.		MGE MGE UPS Systems, Inc. UPS SYSTEMS 1660 Scenic Avenue Costa Mesa, CA 92626	
	APPROVALS		DATE	
	DRAWN	H.D	11/9/04	
	CHECKED	IK	11/9/04	
MATERIAL	MFG ENG	DP	11/9/04	
FINISH	ISSUED	IK	11/9/04	
SCALE 0.071		SIZE B	FSCM NO. 9L985	DWG. NO. 90-173020-00
SHEET 1 OF 4		REV. B01		

NOTES: UNLESS OTHERWISE SPECIFIED,



TOP ENTRY CONDUIT LOCATION

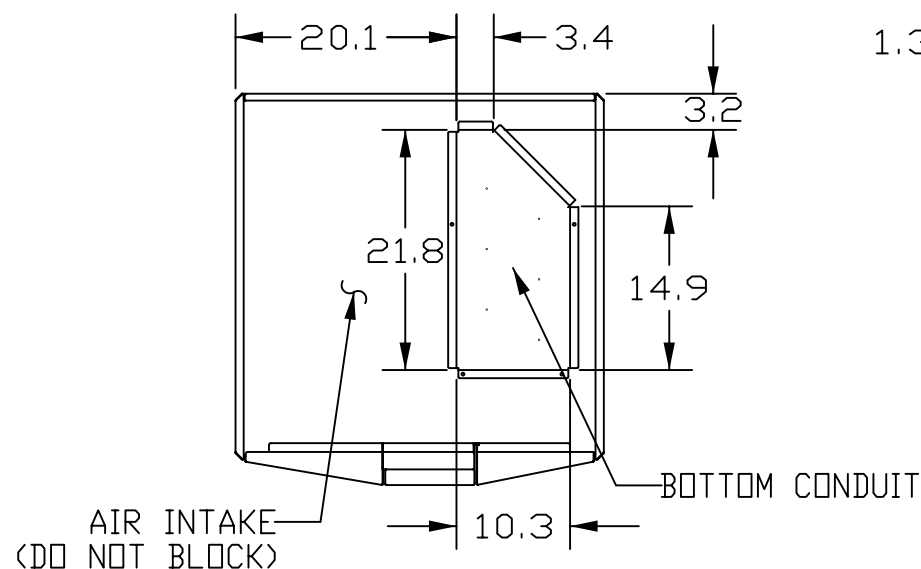


SEISMIC BRACKET LOCATIONS

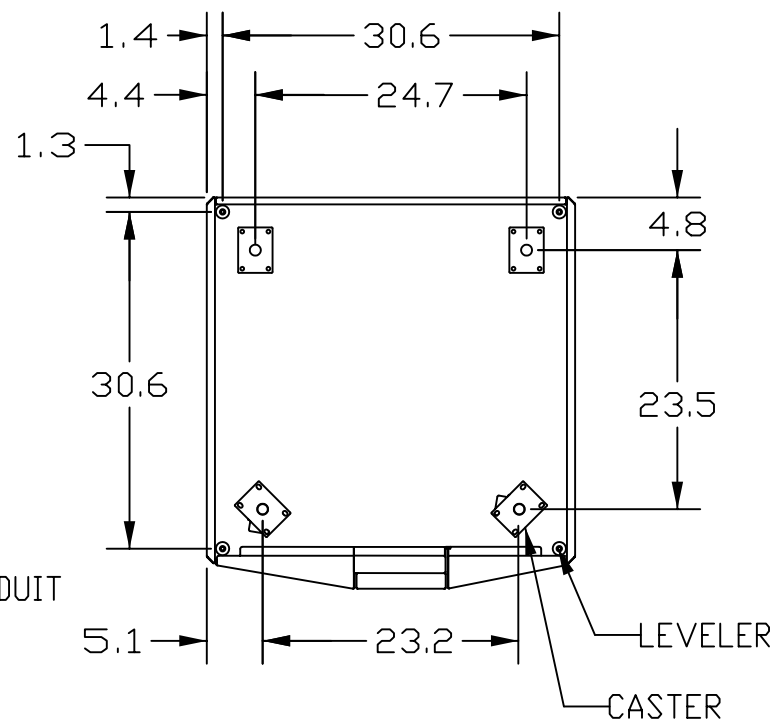
RECOMMENDED CABLE AND CONDUIT SIZES

THIS TABLE IS FOR REFERENCE ONLY. REFER TO APPLICABLE NATIONAL AND LOCAL ELECTRICAL CODES FOR TYPE AND SIZE OF CONDUITS AND CONDUCTORS TO USE FOR INSTALLATION.
 CONDUIT SIZING FOR RIGID METAL CONDUITS.
 COPPER CABLES RATED AT 75°C MINIMUM AT NOMINAL CURRENT AT 30°C.
 POWER AND CONTROL CABLES TO BE IN SEPARATE CONDUITS.
 CONTROL WIRES TO BE 16AWG UL/CSA.

RATING	INPUT VOLTAGE (VOLTS)	OUTPUT VOLTAGE (VOLTS)	INPUT CONDUCTOR SIZE	INPUT CONDUIT SIZE (IN)	OUTPUT CONDUCTOR SIZE	OUTPUT CONDUIT SIZE (IN)
40/50 KVA	208	208	2/0	2	2/0	2
65/75 KVA	208	208	250MCM	2 1/2	300MCM	2 1/2



BOTTOM ENTRY CONDUIT LOCATION



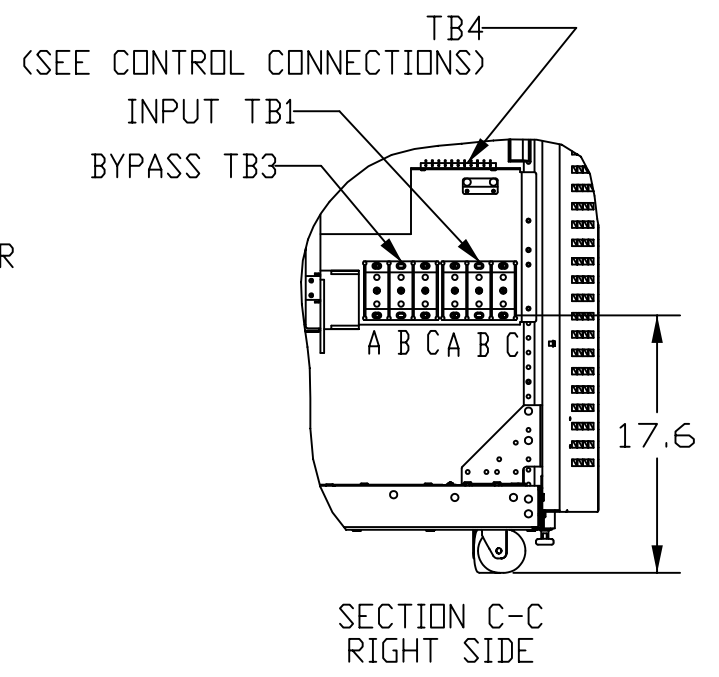
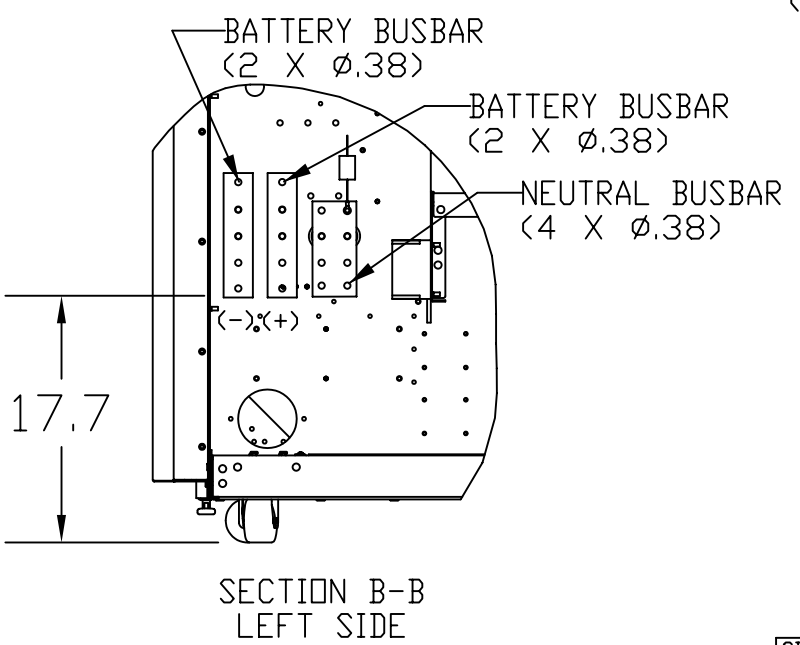
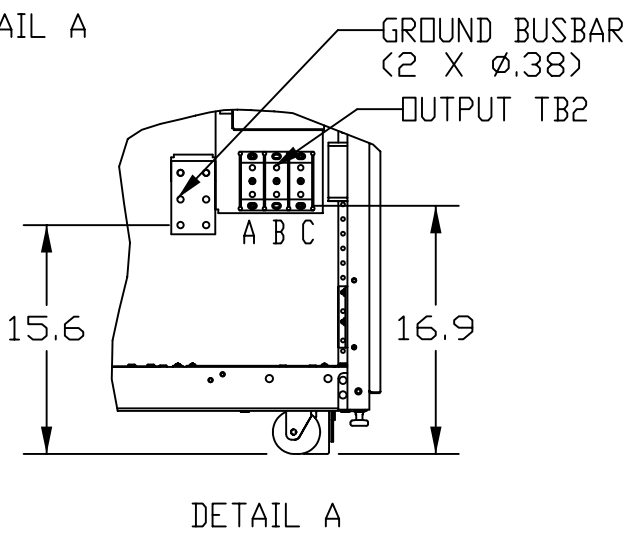
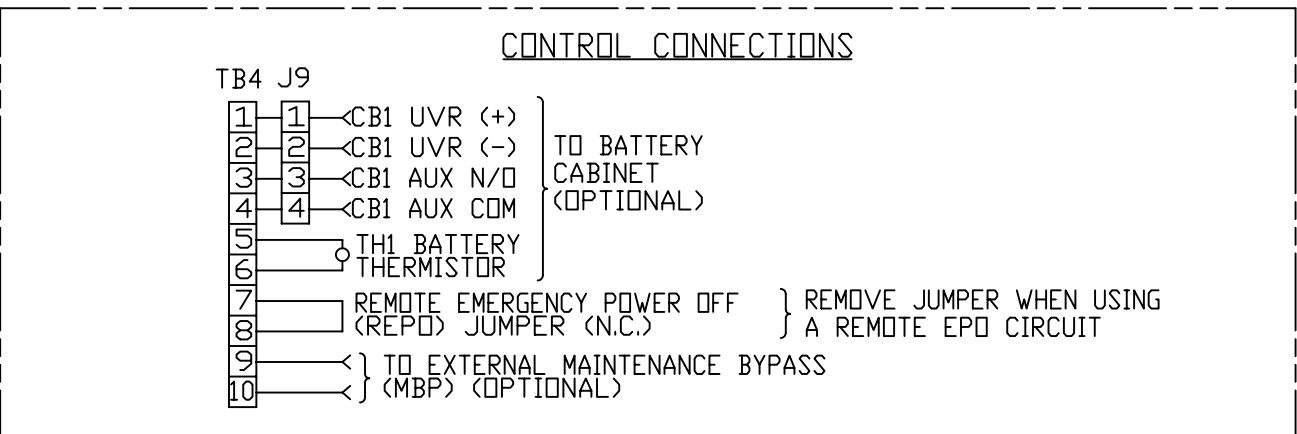
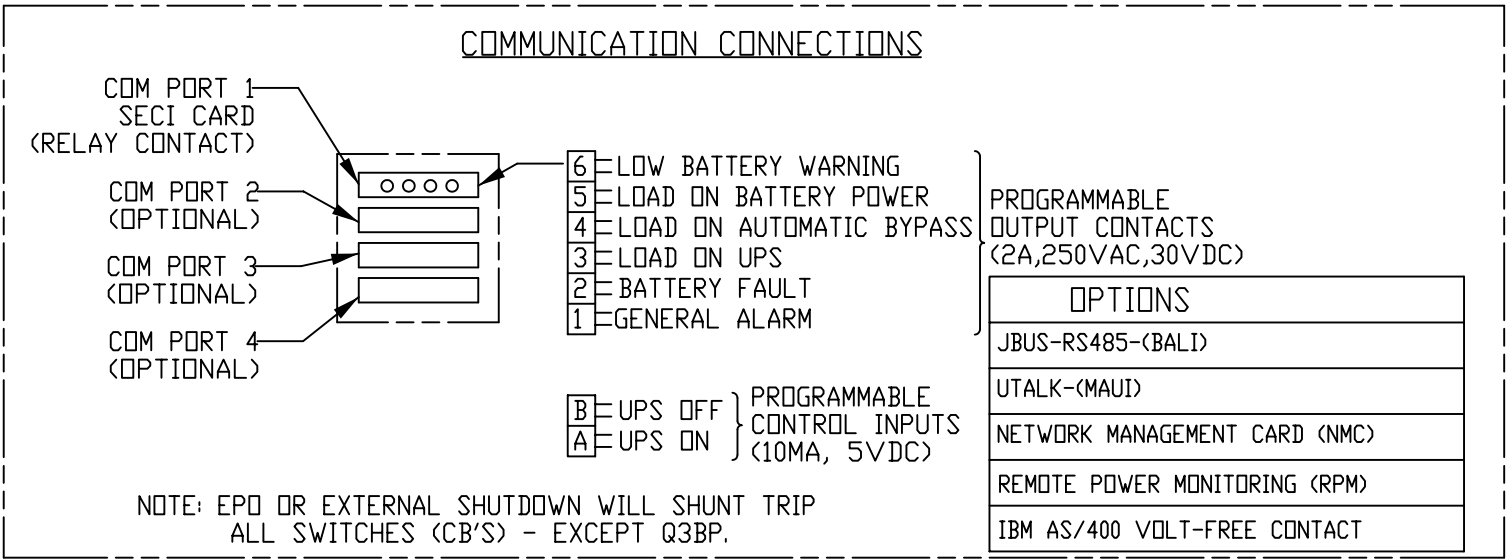
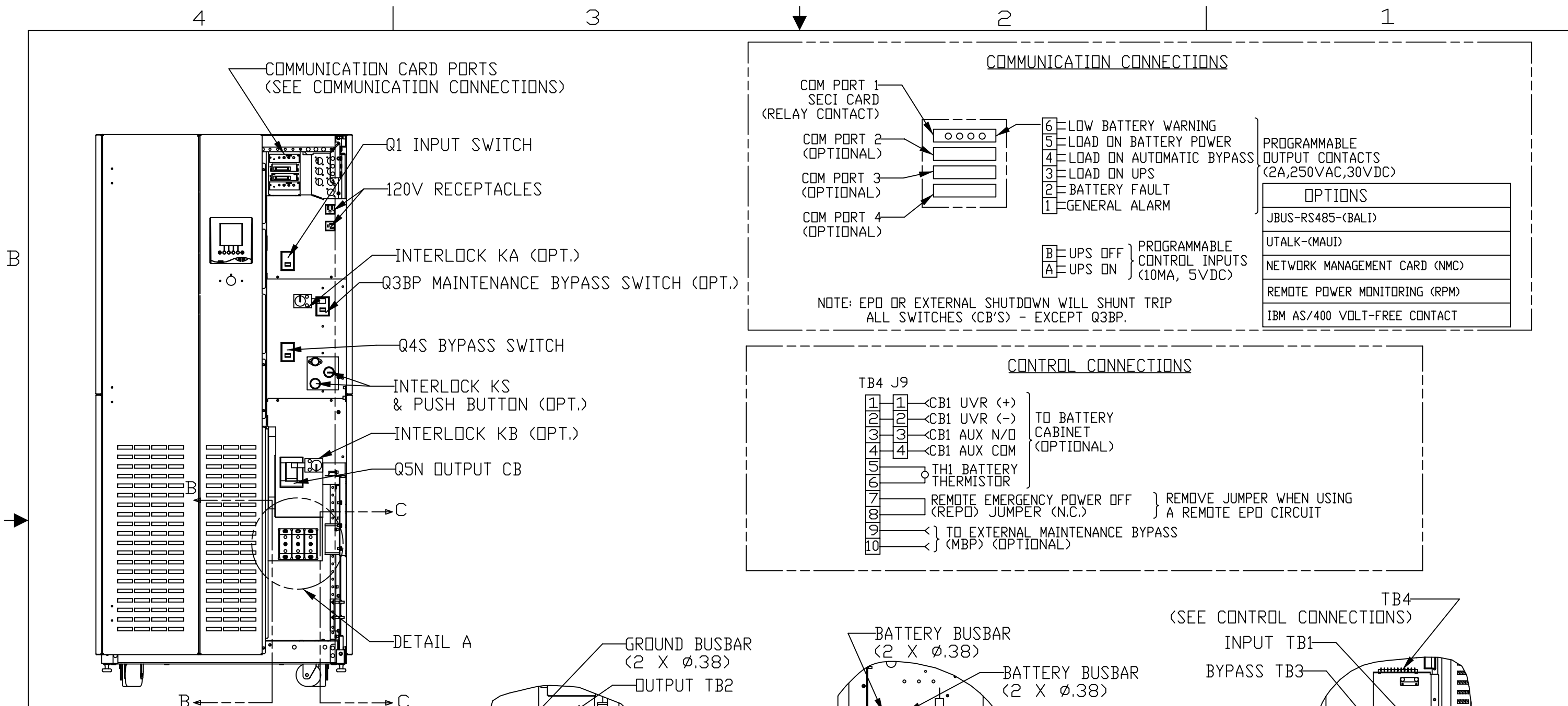
CASTER & LEVELER LOCATIONS

RATING AT 0.8 PF LAG. VIN/VOUT	40 KVA 208/208	50KVA 208/208	65KVA 208/208	75KVA 208/208
INPUT VOLTAGE/ OPTIONAL BYPASS INPUT VOLTAGE	208VAC, 3PH, 4W +G, 60HZ	208VAC, 3PH, 4W +G, 60HZ	208VAC, 3PH, 4W +G, 60HZ	208VAC, 3PH, 4W +G, 60HZ
NOMINAL INPUT CURRENT ON UPS/ON BYPASS	102A/111A	127A/139A	166A/180A	191A/208A
MAXIMUM INPUT CURRENT (AT LOW LINE -15%)	120A	150A	195A	225A
OUTPUT VOLTAGE	208VAC, 3PH, 4W +G, 60HZ	208VAC, 3PH, 4W +G, 60HZ	208VAC, 3PH, 4W +G, 60HZ	208VAC, 3PH, 4W +G, 60HZ
OUTPUT CURRENT (FULL LOAD)	111A	139A	180A	208A
DC FLOAT VOLTAGE (MIN)	282VDC	282VDC	282VDC	282VDC
DC NOMINAL VOLTAGE	240VDC	240VDC	240VDC	240VDC
DC CURRENT AT NOMINAL VOLTAGE	157A	196A	255A	294A
MAXIMUM DC CURRENT AT CUT-OFF VOLTAGE	190A	238A	309A	357A
BATTERY DISCONNECT CB1	250A	250A	400A	400A
MAXIMUM HEAT GENERATION (BTU/HR)	14900	18700	24200	28000
UPS CABINET WEIGHT (LBS) Δ 13	1060	1060	1235	1235
RECOMMENDED UPSTREAM DEVICE	150A	175A	250A	250A

Δ 13 FOR UPS CABINET SHIPPING WEIGHT WITH PALLET ADD 50 LBS.

NOTES: UNLESS OTHERWISE SPECIFIED.

SIZE B	FSCM NO. 9L985	DWG. NO. 90-173020-00	REV. B01
SCALE 0.071		SHEET 2 OF 4	



14. TERMINAL BLOCKS (TB1-TB3): 3/8-16 STUD, TORQUE 350 IN-LBS.
15. PHASE ROTATION: A,B,C CLOCKWISE.

NOTES: UNLESS OTHERWISE SPECIFIED.

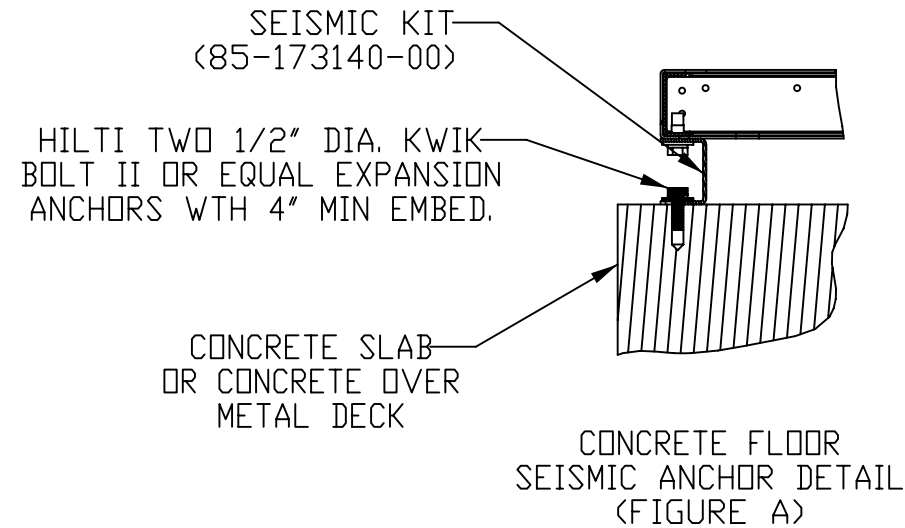
SIZE B	FSCM NO. 9L985	DWG. NO. 90-173020-00	REV. B01
SCALE 0.071		SHEET 3 OF 4	

4

3

2

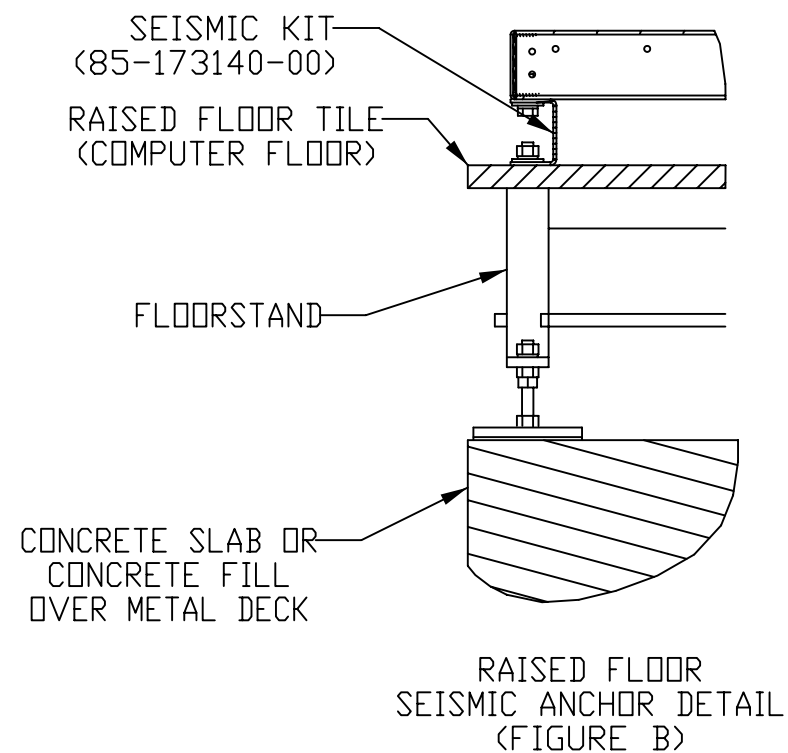
1



INSTRUCTIONS FOR SEISMIC BRACKET INSTALLATION

CONCRETE FLOOR (FIGURE A)

1. SELECT APPROPRIATE HOLE PATTERN FOR EQUIPMENT REQUIRED. (SEE SHEET 3)
2. CUSTOMER TO DRILL HOLES IN CONCRETE FLOOR AND INSTALL SEISMIC KIT (85-173140-00) USING CUSTOMER SUPPLIED EXPANSION ANCHORS (HILTI KWIK BOLT II OR EQUIV. EXPANSION ANCHORS).
3. LOCATE EQUIPMENT ON SEISMIC KIT AND SECURE USING 3/8" HARDWARE PROVIDED.
4. CONCRETE SHALL BE NORMAL WEIGHT AND SHALL HAVE A MINIMUM COMPRESSION STRENGTH OF 3000 PSI.
5. MINIMUM THICKNESS OF CONCRETE SLAB SHALL BE 4" OVER TOP OF METAL DECK FLUTES.
6. NOT FOR INSTALLATION ON A LIGHT WEIGHT CONCRETE SLAB.



RAISED FLOOR (FIGURE B)

INFORMATION PROVIDED IS AS A GENERAL GUIDELINE ONLY.
CONSULT WITH CERTIFIED STRUCTURAL ENGINEER FOR APPROPRIATE FLOORSTAND DESIGN AND
INSTALLATION METHOD.

1. LOCATE MOUNTING HOLES PER FLOORSTAND DESIGN.
2. CUSTOMER TO DRILL HOLES IN CONCRETE FLOOR AND INSTALL FLOORSTAND USING CUSTOMER SUPPLIED EXPANSION ANCHORS (HILTI KWIK BOLT II OR EQUIV. EXPANSION ANCHORS).
3. SECURE SEISMIC KIT (85-173140-00) TO FLOORSTAND WITH APPROPRIATE HARDWARE.
4. LOCATE EQUIPMENT ON SEISMIC KIT AND SECURE USING 3/8" HARDWARE PROVIDED.
5. CONCRETE SHALL BE NORMAL WEIGHT AND SHALL HAVE A MINIMUM COMPRESSION STRENGTH OF 3000 PSI.
6. MINIMUM THICKNESS OF CONCRETE SLAB SHALL BE 4" OVER TOP OF METAL DECK FLUTES.
7. NOT FOR INSTALLATION ON A LIGHT WEIGHT CONCRETE SLAB.

NOTES: UNLESS OTHERWISE SPECIFIED.

SIZE	FSCM NO.	DWG. NO.	REV.
B	9L985	90-173020-00	B01
SCALE 0.125		SHEET 4 OF 4	