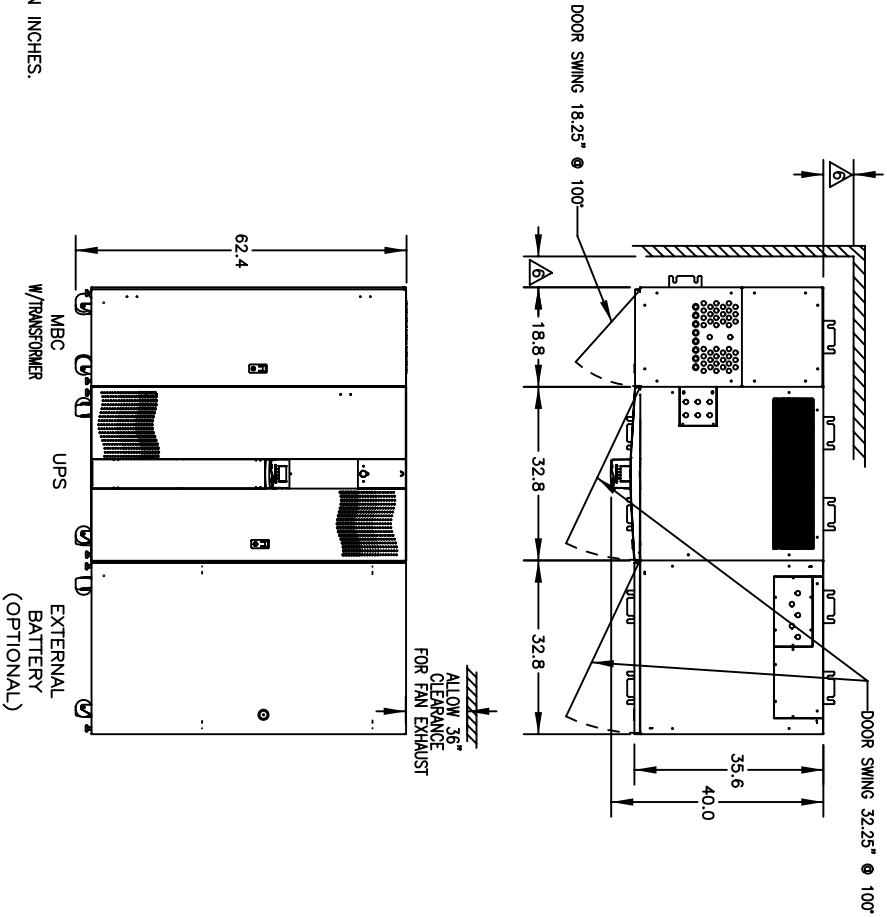


MGE UPS SYSTEMS, INC. (MGE) CLAIMS PROPRIETARY RIGHTS IN THE MATERIALS DISCLOSED HEREON. THE CONTENTS ARE ISSUED FOR THE EXCLUSIVE USE OF THE CUSTOMER AND ARE NOT TO BE REPRODUCED OR TRANSMITTED IN ANY FORM OR BY ANY MEANS, ELECTRONIC OR MECHANICAL, INCLUDING PHOTOCOPYING, RECORDING, OR BY ANY INFORMATION STORAGE AND RETRIEVAL SYSTEM, WITHOUT WRITTEN PERMISSION FROM MGE.

SYSTEM DIMENSIONS



REVISIONS			
REV.	DESCRIPTION	DATE	APPROVED
A00	NEW RELEASE	03-11-04	YNG

TABLE 1

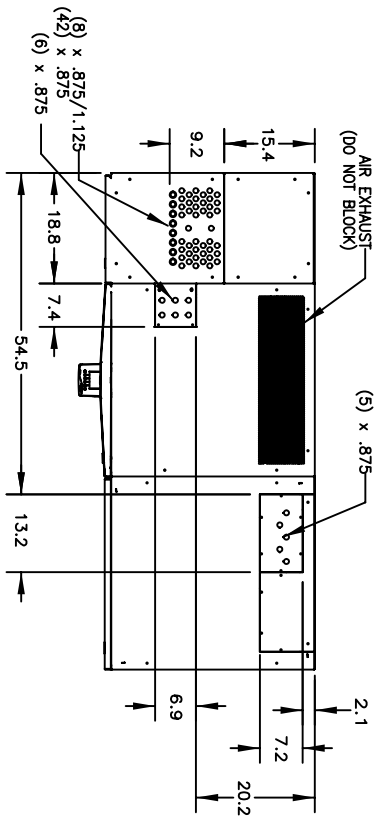
	UPS CABINET WEIGHTS (LBS.)			
	10-15KVA		20-30KVA	
	W/INPUT XFMR	NO. INPUT XFMR	W/INPUT XFMR	NO. INPUT XFMR
NO. BATTERIES	1032	742	1185	785
LEVEL 1 BATTERY	1322	1032	1475	1075
LEVEL 2 BATTERY	1716	1426	1869	1469
LEVEL 3 BATTERY	1892	1602	2045	1645
LEVEL 4 BATTERY	2412	2122	2565	2165

1. DIMENSION FORMAT IS IN INCHES.
  2. COLOR: LIGHT GRAY.
  3. CABINET WEIGHTS: UPS: SEE TABLE 1, MBC W/OUTPUT TRANSFORMER: 495 LBS. EXTERNAL BATTERY: 2005 LBS. MIN/2723 LBS. MAX.
  4. RECOMMENDED OPERATING RANGE: 60°F (15°C) TO 77°F (25°C) REFER TO SPECS FOR HIGHER TEMPERATURE. HEAT REJECTION FROM TOP OF CABINETS.
  5. IF STORING UPS FOR MORE THAN THREE MONTHS, UPS SHOULD BE POWERED UP FOR 8 HOURS MIN. EVERY THREE MONTHS TO PREVENT DAMAGE TO BATTERIES.
- ⚠ IF INSTALLED WITH SEISMIC BRACKETS, 4.5" CLEARANCE IS REQUIRED.

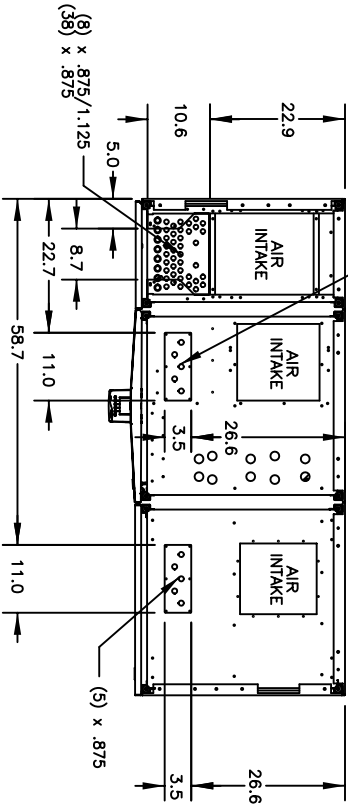
NOTES: UNLESS OTHERWISE SPECIFIED.

CONTRACT NO.		APPROVALS		DATE	
PROGRAM		B.KHOLLOUSI		03-11-04	
CHECKED		KJK		03-11-04	
ISSUED		YNG		03-11-04	
SCALE		NONE		SHEET 1 OF 3	
MGE UPS SYSTEMS, Inc. 1660 Scenic Avenue Costa Mesa, CA. 92626		INSTALLATION DRAWING 10-30KVA UPS AND MBC W/TRANSFORMER			
SIZE	FISAT NO.	DWG. NO.	REV.		
B	91985	99-17958-03	A00		

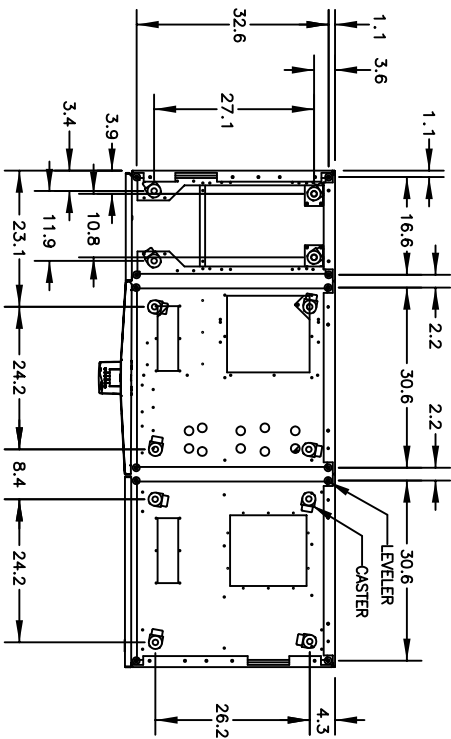
TOP ENTRY CONDUIT LOCATIONS



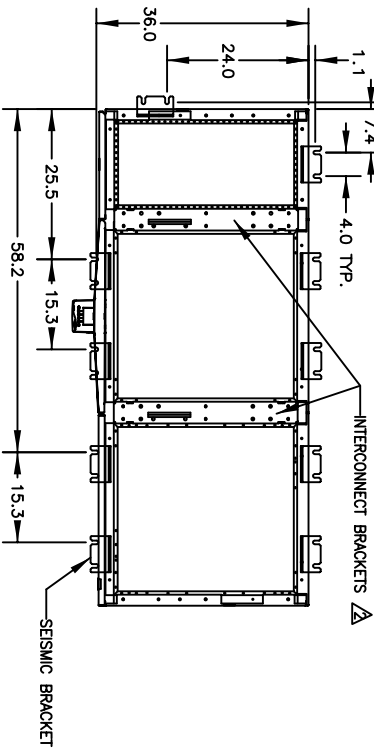
BOTTOM ENTRY CONDUIT LOCATIONS



CASTER & LEVELER LOCATIONS



SEISMIC & INTERCONNECT BRACKET LOCATIONS

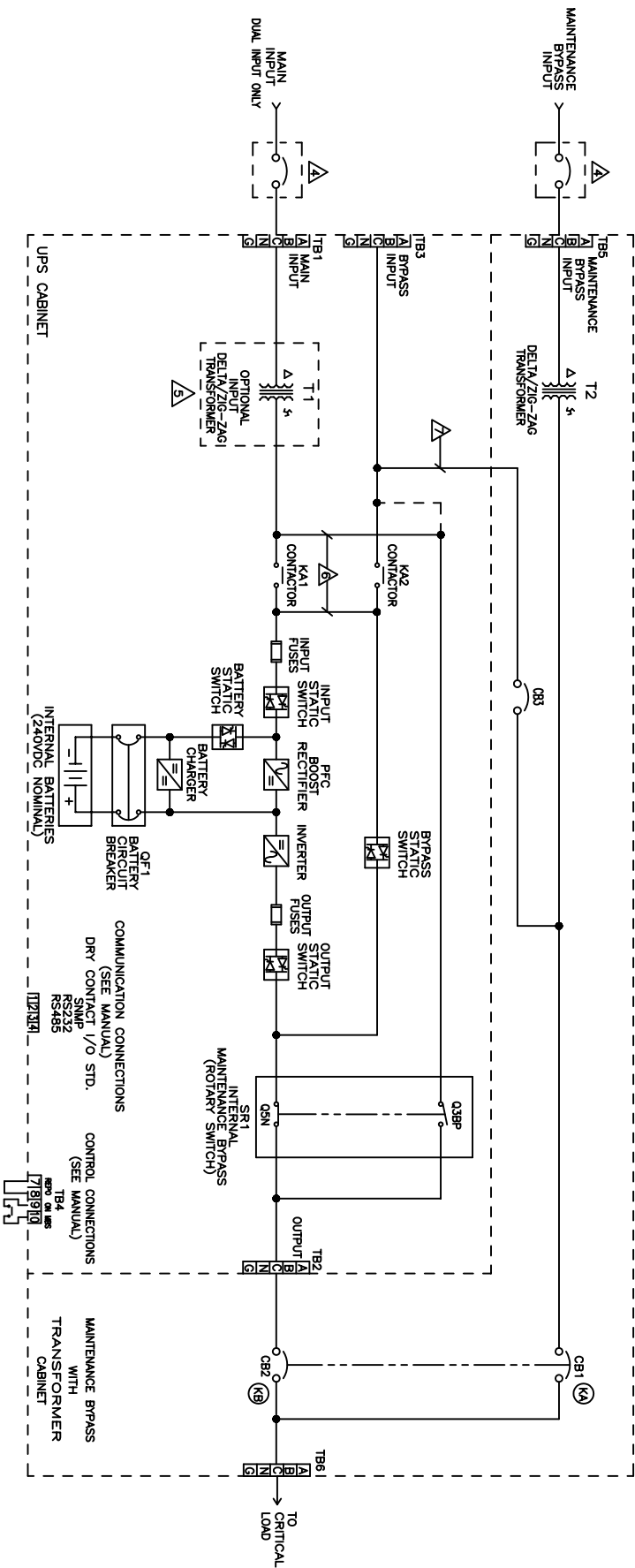


- CONDUIT PLATE INSTALLATION INSTRUCTIONS:  
REMOVE SCREWS FROM CONDUIT PLATE. CONDUIT PLATE MAY NOW BE REMOVED TO PUNCH HOLES.  
REINSTALL CONDUIT PLATE AND SECURE WITH SCREWS.
- INTERCONNECT BRACKETS INSTALLATION INSTRUCTIONS:  
ALIGN CABINETS NEXT TO EACH OTHER. REMOVE THE TOP PANELS, PLACE BRACKET OVER TOP TWO FRAME RAILS AND SECURE WITH SIX 10-32 SCREWS. PLACE TOP PANELS BACK AND SECURE WITH SUPPLIED HARDWARE.

NOTES: UNLESS OTHERWISE SPECIFIED.

SIZE	FISUM NO.	DWG. NO.	REV.
B	91985	99-17958-03	A00
SCALE	NONE		SHEET
	\s917958.dwg		2 OF 3

UPS SYSTEM WITH MBC WITH OUTPUT TRANSFORMER SINGLE LINE



NOMINAL INPUT AND OUTPUT CURRENTS (A)

Vin/Vout	I (in)	I (out)	I (in)	I (out)	I (in)	I (out)
10kVA/8kW	26	28	39	42	56	78
20kVA/16kW	26	28	39	42	56	78
30kVA/24kW	26	28	39	42	56	78
40kVA/32kW	26	28	39	42	56	78
50kVA/40kW	26	28	39	42	56	78
60kVA/48kW	26	28	39	42	56	78
80kVA/64kW	26	28	39	42	56	78
100kVA/80kW	26	28	39	42	56	78

INPUT CIRCUIT BREAKER RATING

10kVA/8kW	15kVA/12kW	20kVA/16kW	30kVA/24kW
40A	60A	70A	100A
20A	20A	40A	40A
20A	20A	30A	40A

MAXIMUM HEAT REJECTION (BTU'S)

10kVA/8kW	15kVA/12kW	20kVA/16kW	30kVA/24kW
4,100	6,100	8,200	12,200

ELECTRICAL SPECIFICATIONS

- FOLLOW ALL APPLICABLE NEC AND LOCAL ELECTRICAL CODES.
  - ALL EXTERNAL WIRING BY OTHERS.
  - POWER AND CONTROL CABLES SHALL BE IN SEPARATE CONDUITS.
  - UPSTREAM PROTECTIVE DEVICE REQUIRED PROVIDED BY OTHERS.
  - OPTIONAL.
  - NOT PRESENT WITH SEPARATE BYPASS OPTION.
  - CONNECTED TO TB1 FOR SINGLE INPUT.
- NOTES: UNLESS OTHERWISE SPECIFIED.

SIZE	FISUM NO.	DWG. NO.	REV.
B	91985	99-17958-03	A00
SCALE	NONE	\ 99179\ 9806033	SHEET 3 OF 3