

MGE UPS SYSTEMS, INC. (MGE) CLAIMS PROPRIETARY RIGHTS IN THE MATERIAL DISCLOSED HEREON. THIS DOCUMENT IS ISSUED FOR ENGINEERING INFORMATION ONLY. IT MAY NOT BE DISCLOSED TO OTHERS NOR MAY IT BE USED FOR MANUFACTURING PURPOSES WITHOUT WRITTEN PERMISSION FROM MGE.

# GALAXY 3000 PHYSICAL CHARACTERISTICS 10-30kVA UPS & MAINT. BYPASS CABINET

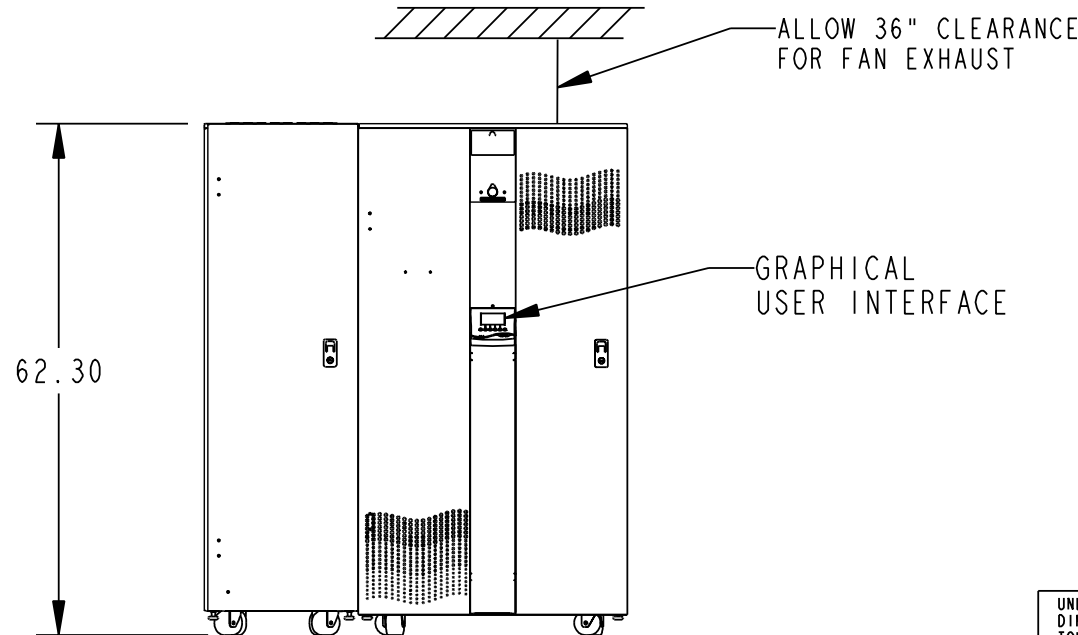
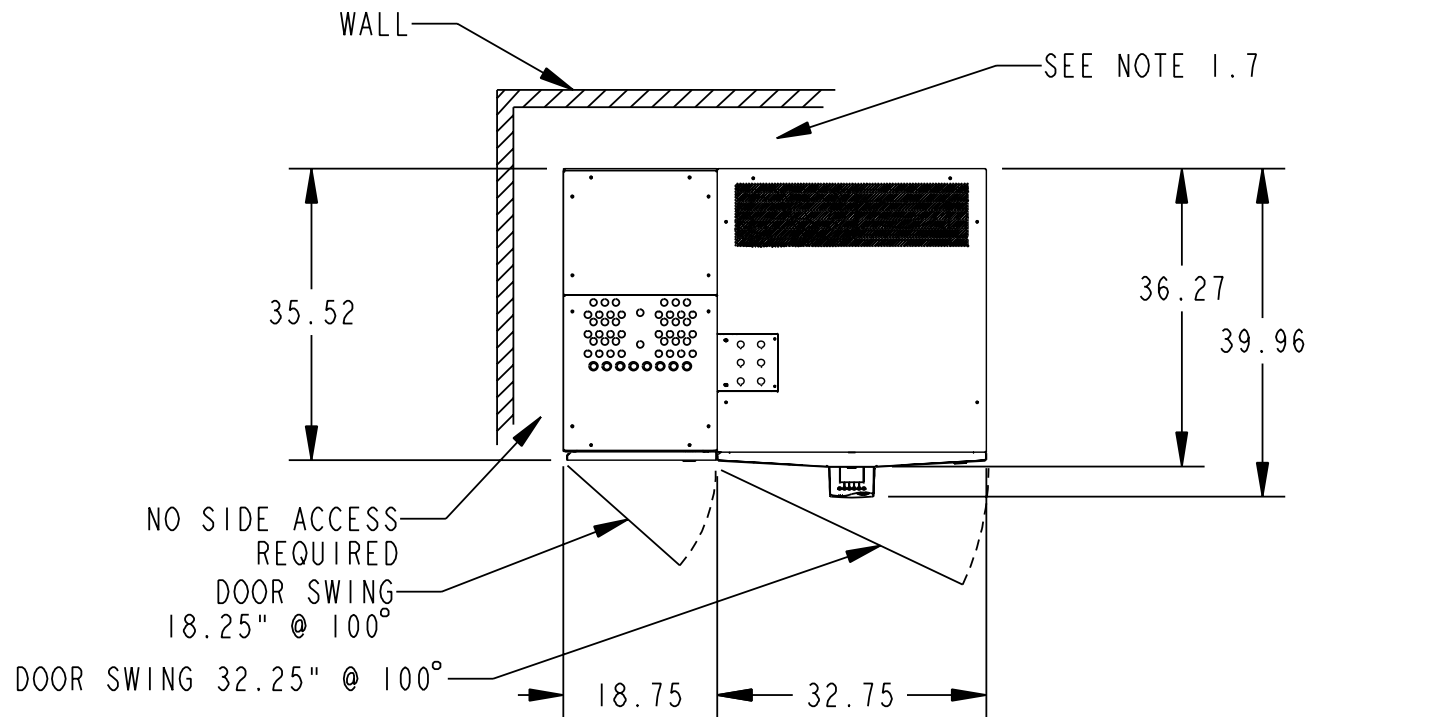
REVISIONS				
ZONE	REV	DESCRIPTION	DATE	APPROVED
	A00	RELEASED PER ECN-005106	04/26/07	SD WN

NOTES : UNLESS OTHERWISE SPECIFIED.

- 1.1 DIMENSION FORMAT IS IN INCHES.
- 1.2 ALL DIMENSIONS ARE TO THE OUTSIDE EDGE OF CABINET, EXCLUDING DOOR LOCK AND HARDWARE.
- 1.3 A PHILLIPS SCREWDRIVER IS REQUIRED TO REMOVE INTERNAL AND EXTERNAL PANELS.
- 1.4 COLOR: MGE LIGHT GRAY
- 1.5 OPERATING TEMPERATURE: 32 DEG. F (0 DEG. C) MIN TO F86 DEG. F (30 DEG. C) MAX.  
RECOMMENDED OPERATING RANGE: 60 DEG. F (15C) TO 77 DEG. F (25 DEG. C)  
REFER TO SPECS FOR HIGHER TEMPERATURES.  
HEAT REJECTION IS OUT OF TOP OF CABINETS.
- 1.6 IF STORING UPS FOR MORE THAN THREE MONTHS, UPS SHOULD BE POWERED UP FOR 8 HOURS MIN. EVERY THREE MONTHS TO PREVENT DAMAGE TO BATTERIES.
- 1.7 IF INSTALLED WITH SEISMIC BRACKETS, 4.5" CLEARANCE IS REQUIRED.

CABINET	CABINET WEIGHT (lbs)
UPS MODULE	SEE CHART BELOW
EXTERNAL MAINT BYPASS	592

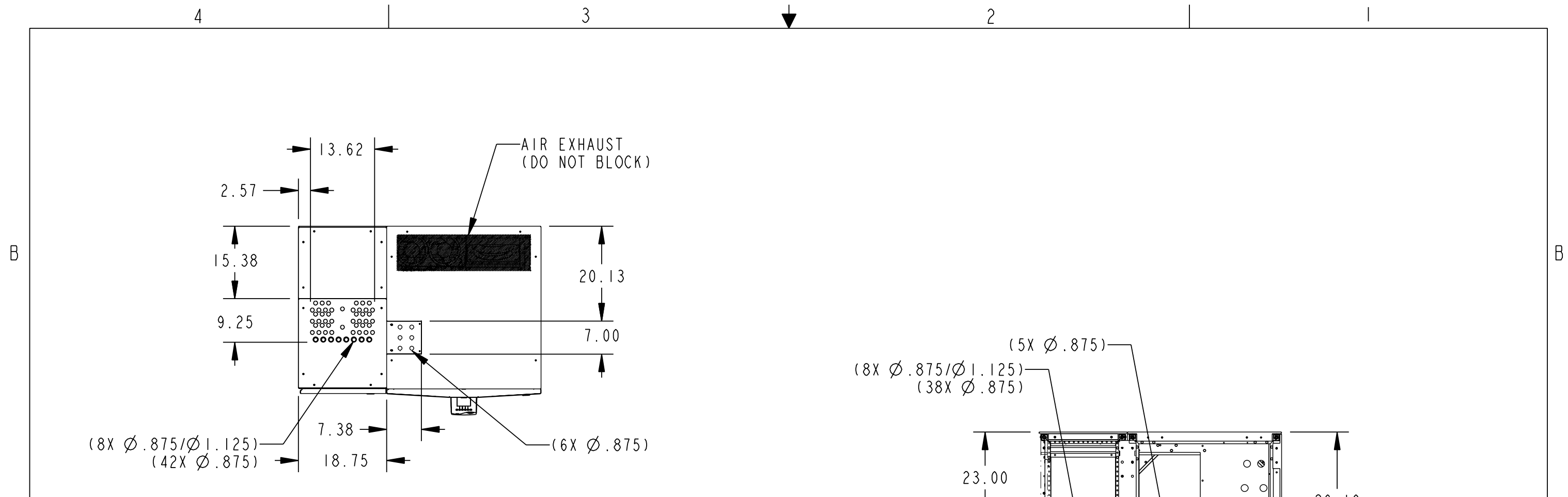
	UPS CABINET WEIGHTS					
	10-15 KVA			20-30 KVA		
	BACKUP TIME (MIN.)		W/INPUT XFMR (LBS.)	BACKUP TIME (MIN.)		W/INPUT XFMR (LBS.)
10 KVA	15 KVA	20 KVA		30 KVA		
NO BATTERIES	N/A	N/A	1032	N/A	N/A	1185
LEVEL 1 BATTERY	12	8	1322	N/A	N/A	1475
LEVEL 2 BATTERY	36	20	1549/1716	14	8	1702/1869
LEVEL 3 BATTERY	56	33	1832/1892	23	12	1832/1892
LEVEL 4 BATTERY	92	51	2182/2412	36	19	2395/2565



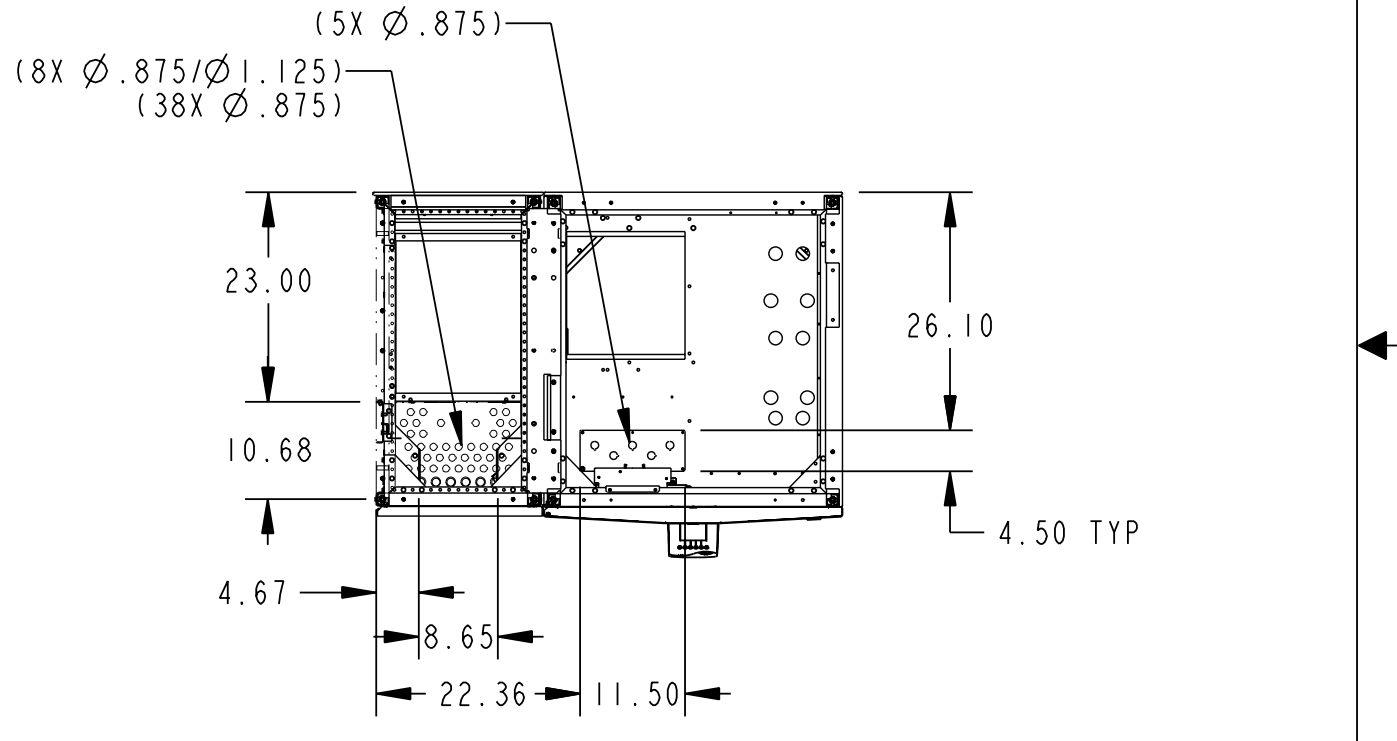
FRONT VIEW

NOTES: UNLESS OTHERWISE SPECIFIED.

UNLESS OTHERWISE SPECIFIED DIMENSIONS ARE IN INCHES TOLERANCES ARE:  DECIMALS .XX ±.03 .XXX ±.010 ANGLES ± 1/2°	CONTRACT NO.	<b>MGE</b> UPS SYSTEMS		MGE UPS Systems, Inc. 1660 Scenic Avenue Costa Mesa, CA 92626	
	APPROVALS	DATE	INSTALLATION DRAWING 10-30kVA UPS, MAINT. BYPASS		
DRAWN S. SIFTON	04/26/07				
MATERIAL	CHECKED W. NIDOY	04/26/07	SIZE <b>B</b> FSCM NO. <b>9L985</b> DWG. NO. <b>90-170966-01</b> REV. <b>A00</b>		
FINISH	MFG ENG	ISSUED D. LORIA	04/26/07	SCALE 0.045 30KVA_INSTALLATION.*** SHEET 1 OF 4	



TOP ENTRY CONDUIT LOCATIONS



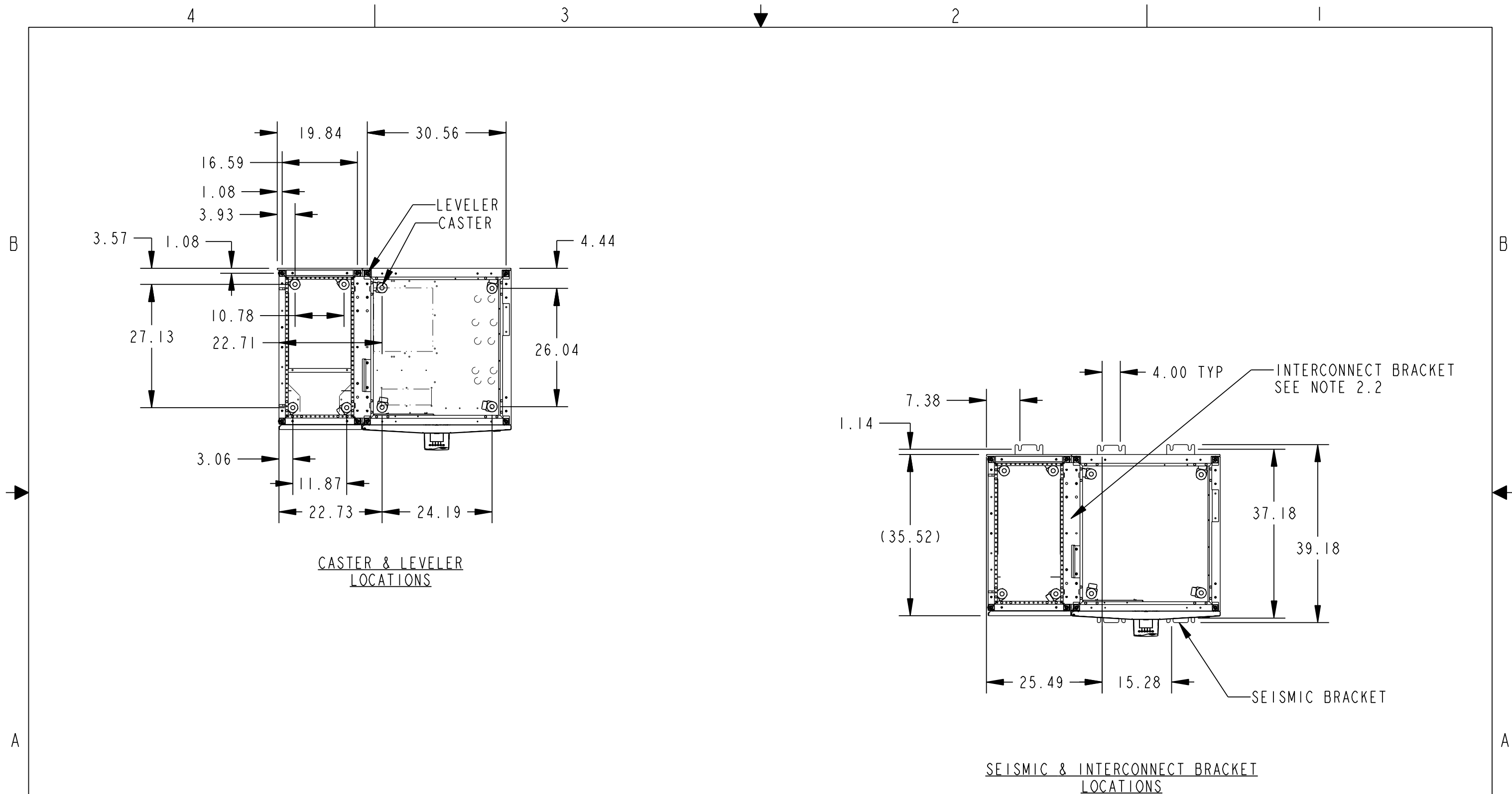
BOTTOM ENTRY CONDUIT LOCATIONS

- 2.1 CONDUIT PLATE INSTALLATION INSTRUCTIONS:  
 REMOVE SCREWS FROM CONDUIT PLATE. CONDUIT PLATE MAY NOW BE REMOVED TO PUNCH HOLES. REINSTALL CONDUIT PLATE AND SECURE WITH SCREWS.
- 2.2 INTERCONNECT BRACKETS INSTALLATION INSTRUCTIONS:  
 ALIGN CABINETS NEXT TO EACH OTHER. REMOVE THE TOP PANELS. PLACE BRACKET OVER TOP OF TWO FRAME RAILS AND SECURE WITH SIX 10-32 SCREWS. PLACE TOP PANELS BACK AND SECURE WITH SUPPLIER HARDWARE.

**GALAXY 3000 TOP & BOTTOM CONDUIT ENTRY LOCATIONS**

NOTES: UNLESS OTHERWISE SPECIFIED.

SIZE <b>B</b>	FSCM NO. <b>9L985</b>	DWG. NO. 90-170966-01	REV. A00
SCALE 0.050		30KVA_INSTALLATION.***	SHEET 2 OF 4

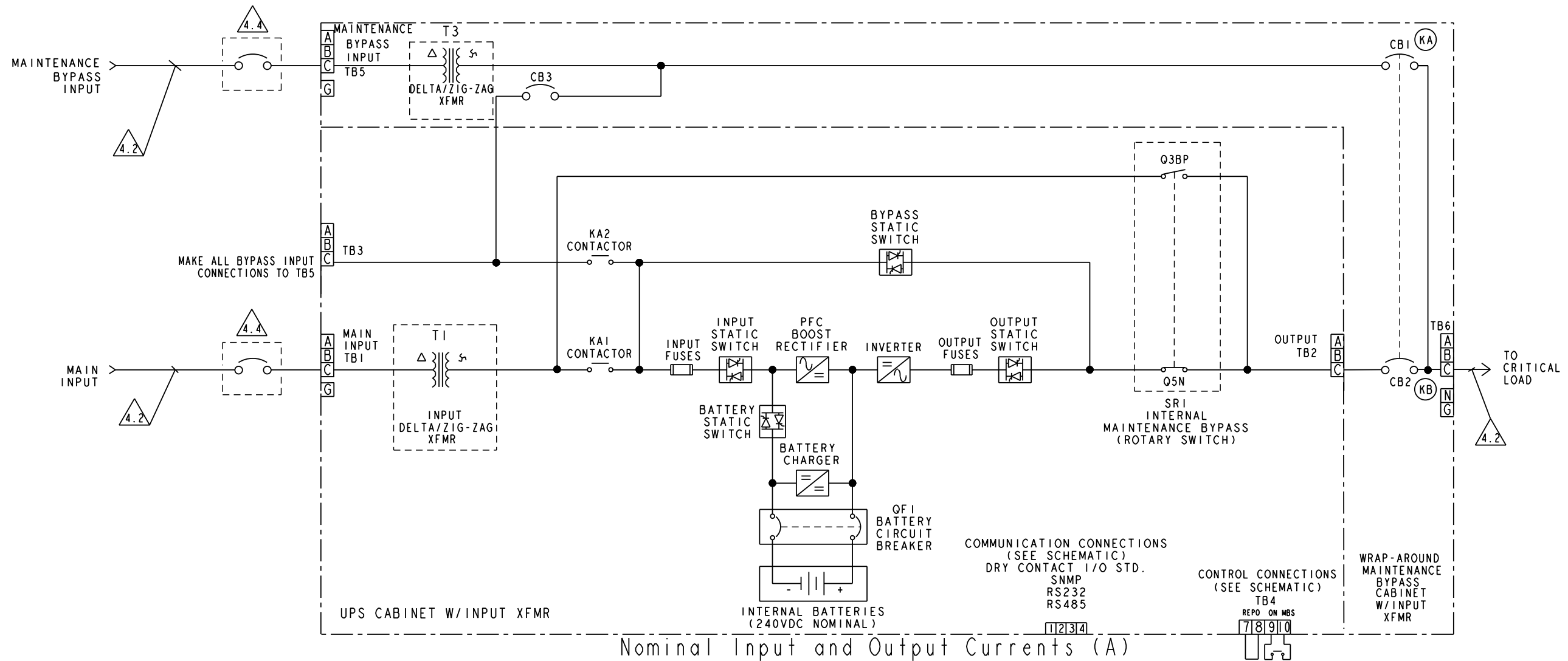


**GALAXY 3000 INTERCONNECTION BRACKETS, SEISMIC ANCHORS, CASTER & LEVELER LOCATIONS**

NOTES: UNLESS OTHERWISE SPECIFIED.

SIZE <b>B</b>	FSCM NO. <b>9L985</b>	DWG. NO. 90-170966-01	REV. A00
SCALE 0.050		30KVA_INSTALLATION.***	SHEET 3 OF 4

# UPS SYSTEM (W/INPUT XFMR) AND MBC (W/INPUT XFMR) SINGLE LINE DIAGRAM



Nominal Input and Output Currents (A)

Vin/Vout	10KVA / 8KW		15KVA / 12KW		20KVA / 16KW		30KVA / 24KW	
	I (in)	I (out)	I (in)	I (out)	I (in)	I (out)	I (in)	I (out)
208/208	26	28	39	42	52	56	78	83
220/208	26	28	39	42	52	56	78	83
220/220	26	26	39	39	53	53	79	79
480/208	12	28	18	42	23	56	35	83
600/208	10	28	14	42	19	56	29	83

## ELECTRICAL SPECIFICATIONS

Frequency (in/out) 60Hz (+8% / -25%)  
 Input Phase Rotation {A,B,C, Clockwise}  
 Input PF > 0.98  
 Input THD < 3%  
 Input Voltage { 208,220 (±15%) 3 Phase, 4W+G.  
 480,600 (±15%) 3 Phase, 3W+G.  
 Nominal DC Voltage (Float) 240 VDC (272VDC Float)  
 Min. DC Voltage 200 VDC  
 Max. DC Current 60ADC (10-15KVA), 120ADC (20-30KVA)  
 Internal Battery Disconnect (QF1) 63 A (10/15 kVA), 125 A (20/30KVA)  
 Internal Maintenance Bypass Switch (A) 55 A (10/15 kVA), 100 A (20/30KVA)

NOTES: UNLESS OTHERWISE SPECIFIED.

## Input Circuit Breaker Rating

Vin	10KVA / 8KW	15KVA / 12KW	20KVA / 16KW	30KVA / 24KW
208	40A	60A	70A	100A
220	40A	60A	70A	100A
480	20A	30A	40A	50A
600	20A	20A	30A	40A

## Maximum Heat Rejection (BTU's)

10KVA / 8KW	15KVA / 12KW	20KVA / 16KW	30KVA / 24KW
4,100	6,100	8,200	12,200

NOTES: UNLESS OTHERWISE SPECIFIED

- 4.1 FOLLOW ALL APPLICABLE NEC & LOCAL ELECTRICAL CODES.
- 4.2 ALL EXTERNAL WIRING BY OTHERS.
- 4.3 POWER & CONTROL CABLES SHALL BE IN SEPARATE CONDUITS.
- 4.4 UPSTREAM PROTECTIVE DEVICE REQUIRED. PROVIDED BY OTHERS.

SIZE <b>B</b>	FSCM NO. <b>9L985</b>	DWG. NO. <b>90-170966-01</b>	REV. <b>A00</b>
SCALE 0.028		30KVA_INSTALLATION.*** SHEET 4 OF 4	