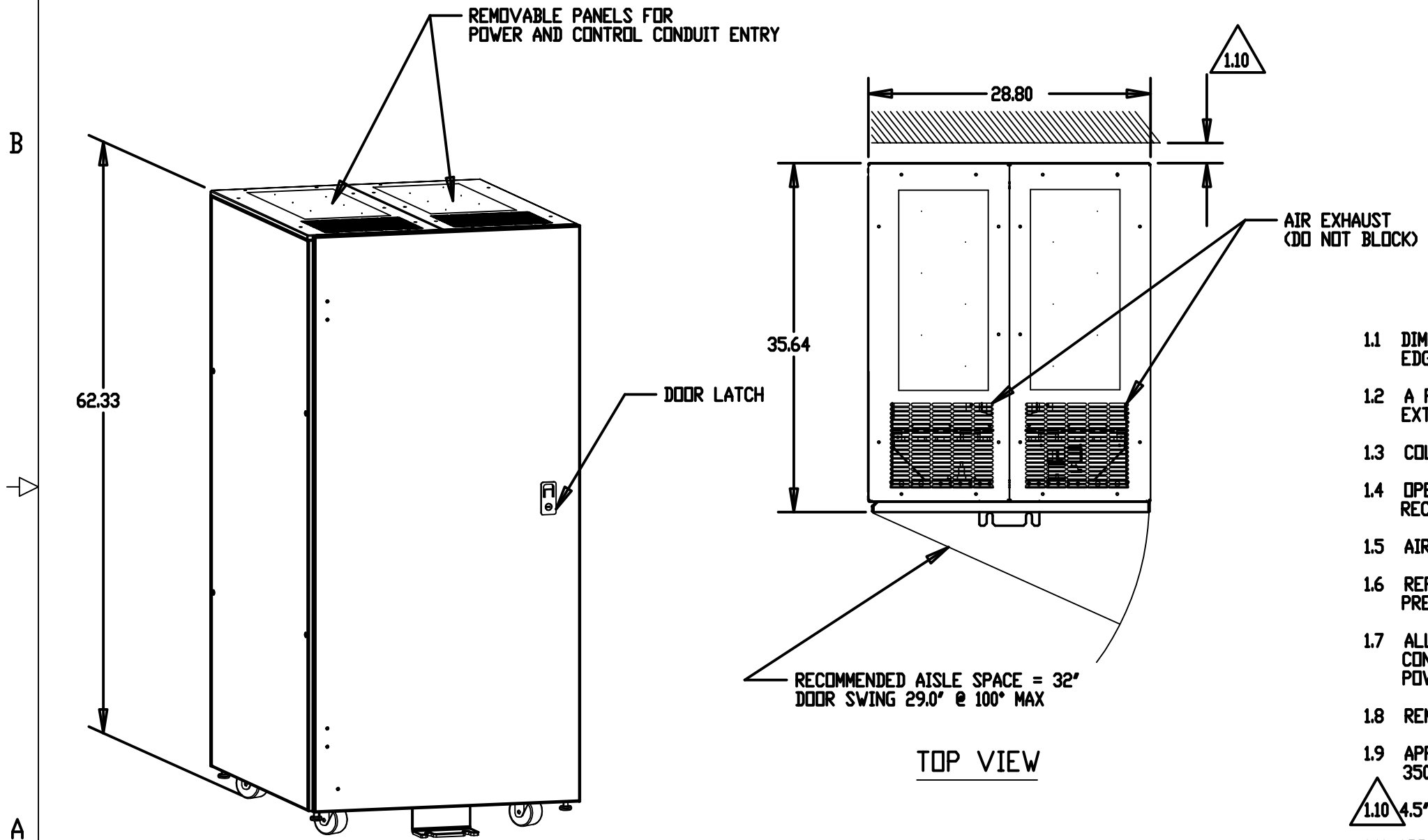


MGE UPS SYSTEMS, INC. (MGE) CLAIMS PROPRIETARY RIGHTS IN THE MATERIAL DISCLOSED HEREON. THIS DOCUMENT IS ISSUED FOR ENGINEERING INFORMATION ONLY. IT MAY NOT BE DISCLOSED TO OTHERS NOR MAY IT BE USED FOR MANUFACTURING PURPOSES WITHOUT WRITTEN PERMISSION FROM MGE.

REVISIONS				
ZONE	REV	DESCRIPTION	DATE	APPROVED
	A00	RELEASED PER ECN-005038	11/02/06	I.K.



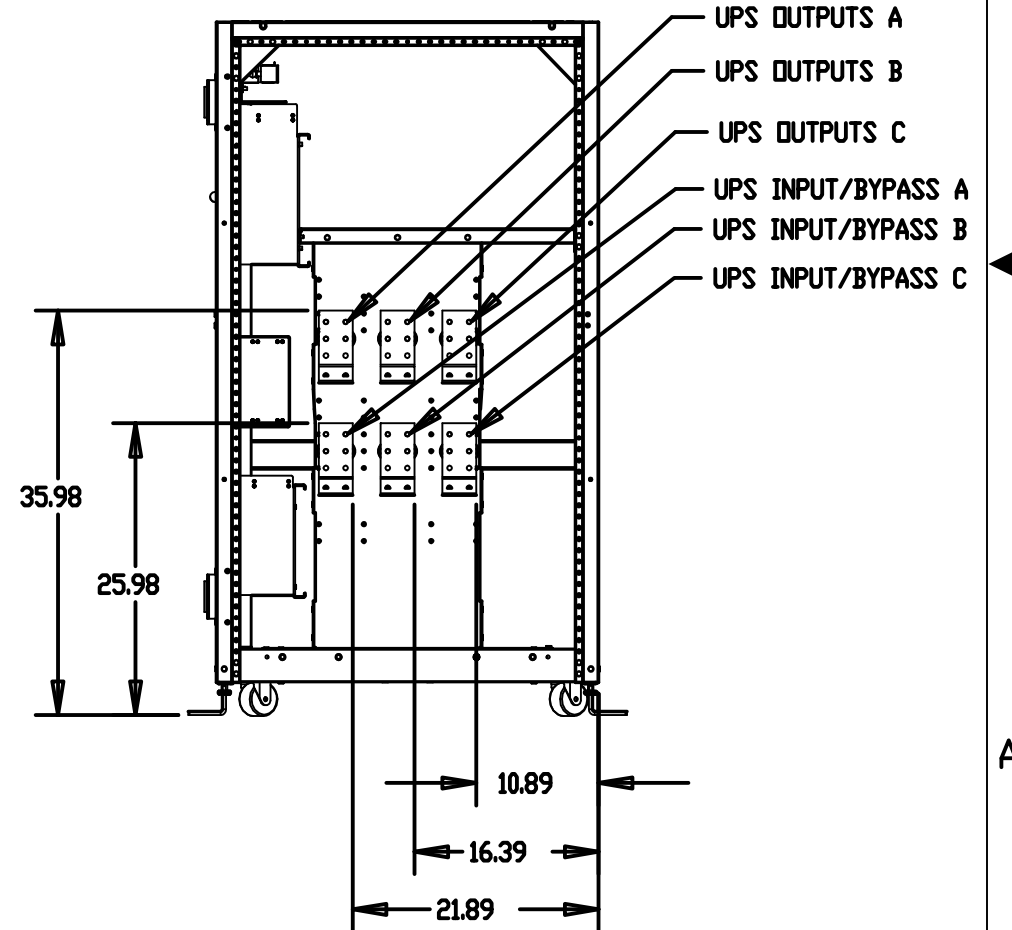
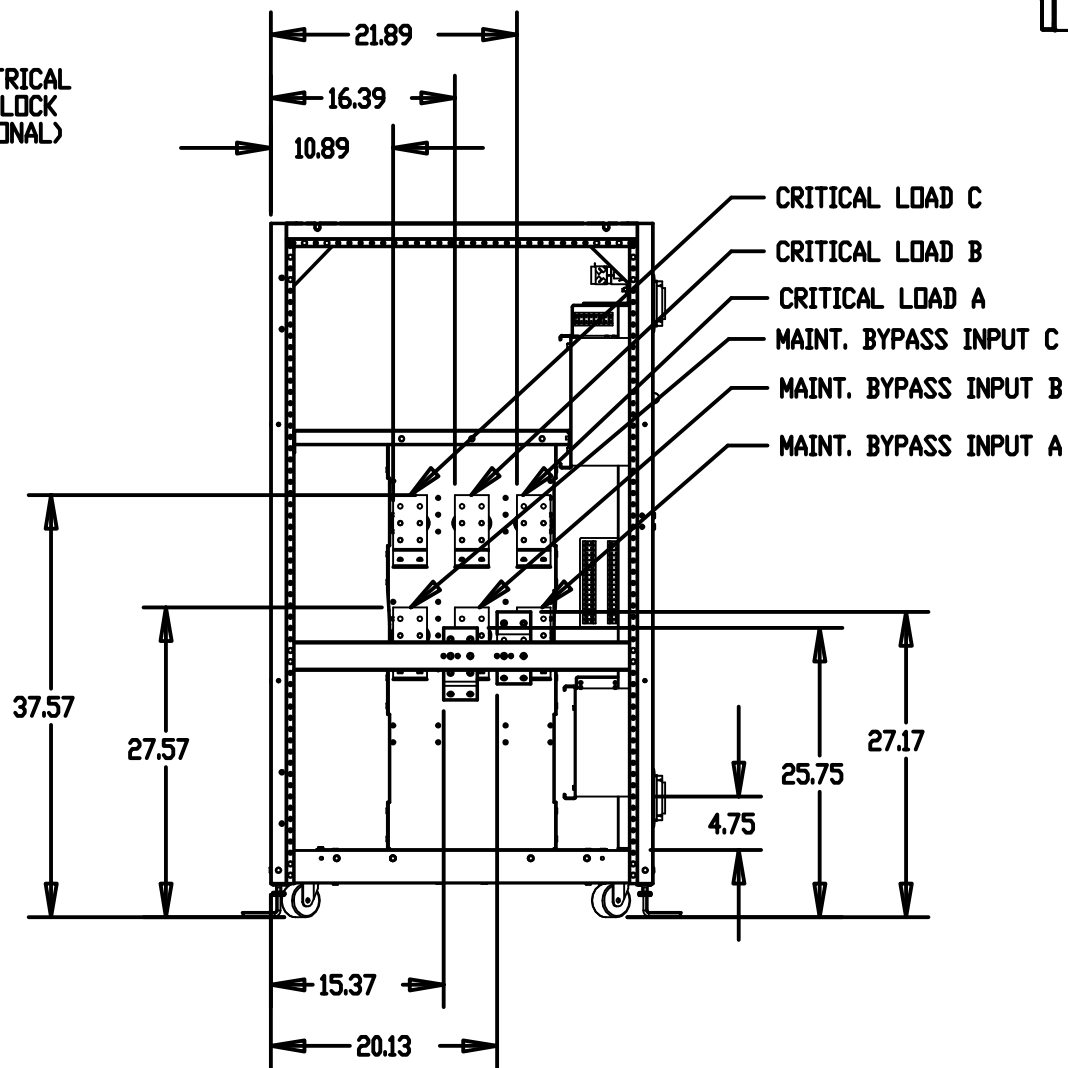
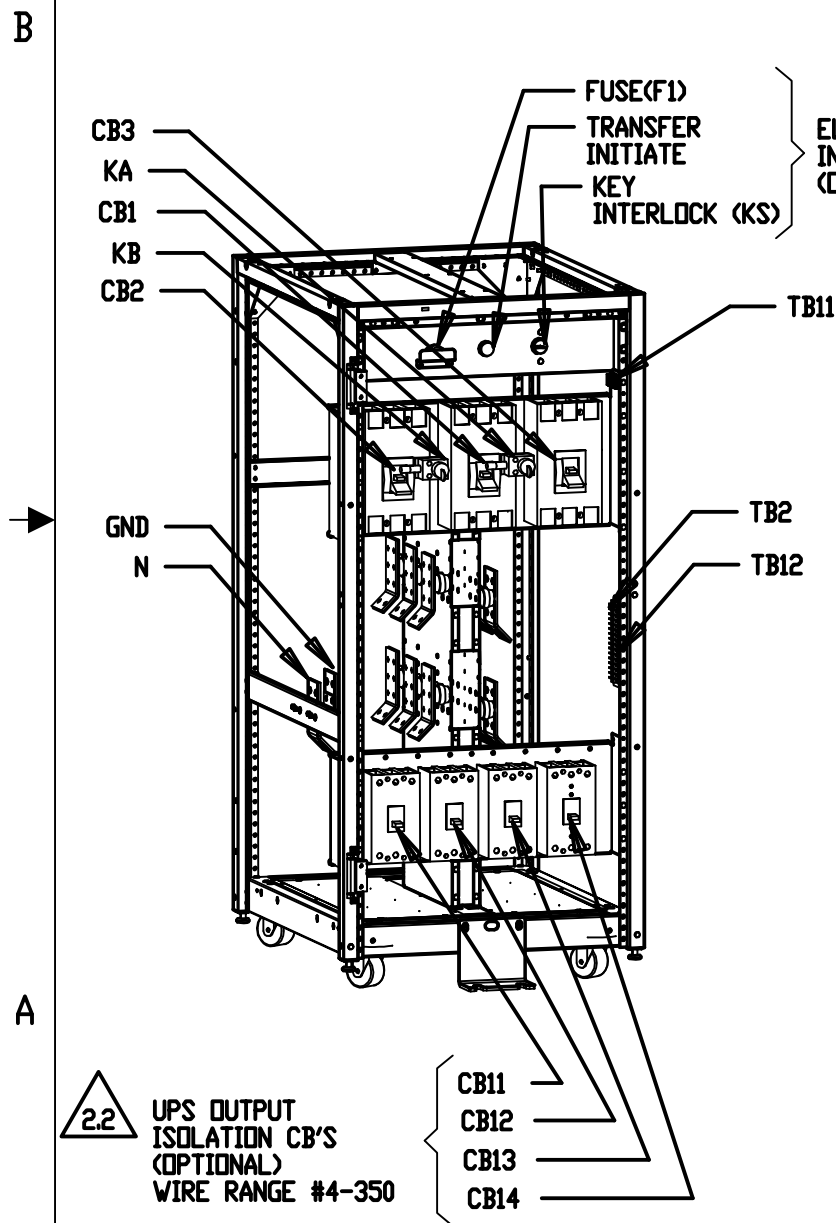
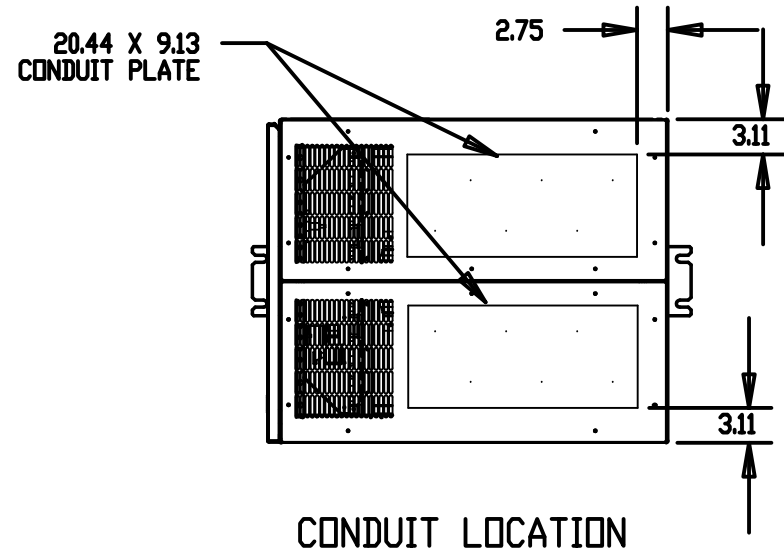
- 1.1 DIMENSION FORMAT IS INCHES. ALL DIMENSIONS ARE TO THE OUTSIDE EDGE OF THE CABINET, EXCLUDING DOOR LATCH AND ALL HARDWARE.
- 1.2 A PHILLIPS SCREWDRIVER IS REQUIRED TO REMOVE INTERNAL AND EXTERNAL PANELS.
- 1.3 COLOR: LIGHT GREY, TIGER DRYLAC 249/12170.
- 1.4 OPERATING TEMPERATURE: 32°F TO 86°F (30°C) MAX. RECOMMENDED OPERATING RANGE: 60°F (15°C) TO 77°F (25°C)
- 1.5 AIR EXHAUST: TOP.
- 1.6 REFER TO MGE DOCUMENT NO. 9-00038-00 FOR CABLE PREPARATION PROCEDURE FOR FIELD WIRING.
- 1.7 ALL EXTERNAL WIRING SUPPLIED AND CONNECTED BY CUSTOMER. CONTROL WIRES SHOULD BE ROUTED SEPARATELY FROM POWER CABLES.
- 1.8 REMOVE NEUTRAL-TO-GROUND BOND IN EACH PARALLEL UPS.
- 1.9 APPLICABLE RATINGS AND SBC MODEL NUMBERS: 225A: 72-170823-22, 350A: 72-170833-22.
- 1.10 4.5' MINIMUM DISTANCE TO WALL WHEN USING SEISMIC BRACKETS.
- 1.11 APPROXIMATE WEIGHT: 300 LBS.

NOTES: UNLESS OTHERWISE SPECIFIED.

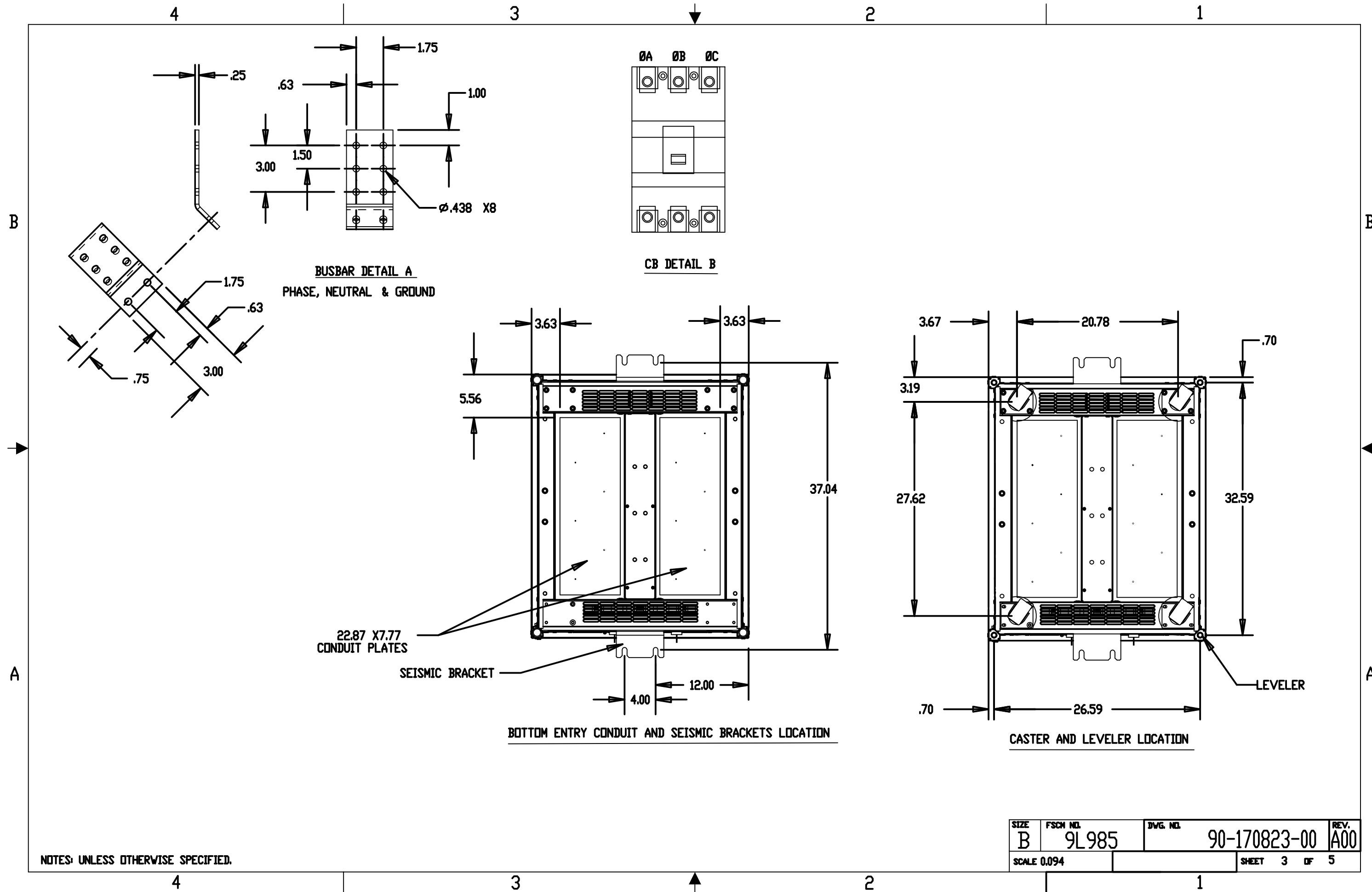
UNLESS OTHERWISE SPECIFIED DIMENSIONS ARE IN INCHES TOLERANCES ARE:	CONTRACT NO.		MGE MGE UPS Systems, Inc. UPS SYSTEMS 1660 Scenic Avenue Costa Mesa, CA 92626					
	DECIMALS	ANGLES	APPROVALS	DATE	INSTALLATION DRAWING 3CB SYSTEM BYPASS CABINET GALAXY 3000 PARALLEL			
		DRAWN	H.DINH	09/01/06				
		CHECKED	J.LING	09/01/06				
MATERIAL		MFG ENG			SIZE	FSCN NO.	DWG. NO.	REV.
FINISH		ISSUED	I.KENNEDY	09/01/06	B	9L985	90-170823-00	A00
				SCALE 0.078			SHEET 1 OF 5	

RECOMMENDED POWER WIRING

		60KVA	90KVA
		3CB	3CB
		72-170823-22	72-170833-22
INPUT/OUTPUT	CB1, CB2, CB3	4/0	500 or 2x 2/0
	NEUTRAL	2x 1/0	2x 4/0
	GROUND	4 AWG	3 AWG
FROM UPS	CB11, CB12, CB13, CB14	2 AWG	2 AWG
	NEUTRAL	1/0	1/0
	GROUND	6 AWG	6 AWG

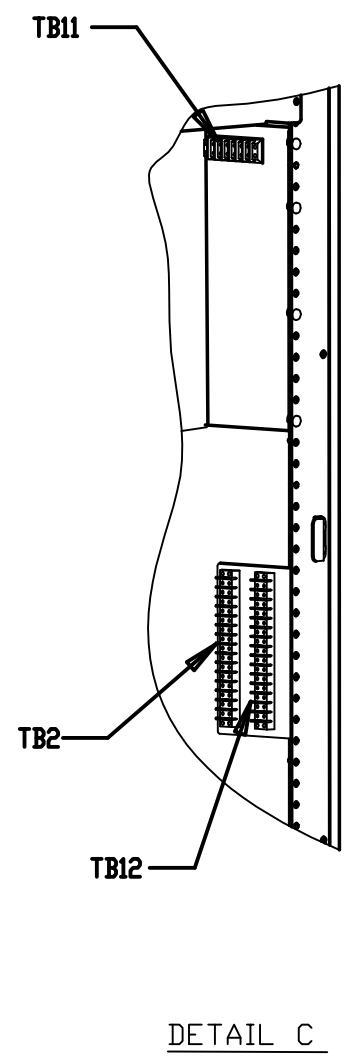
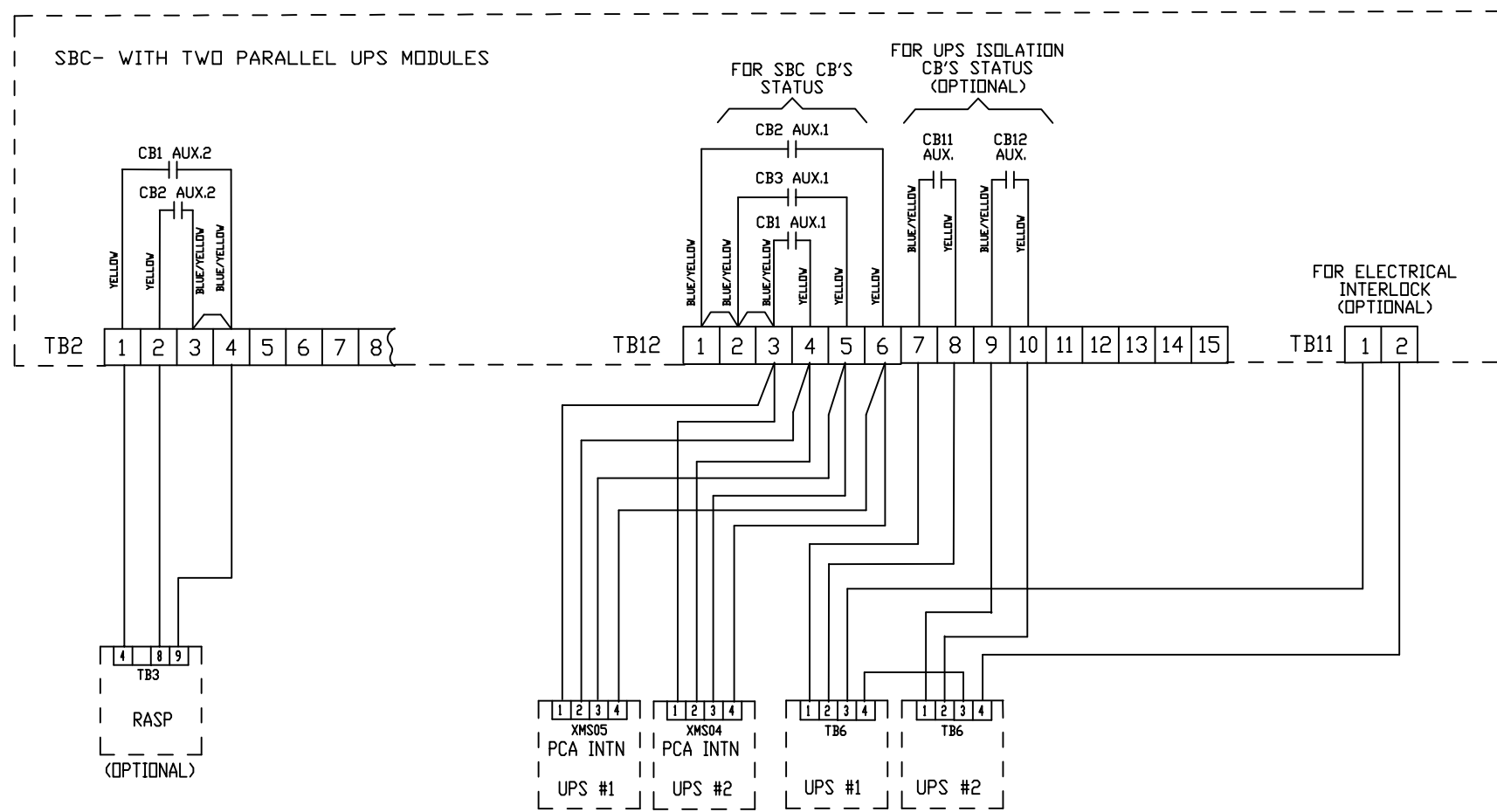
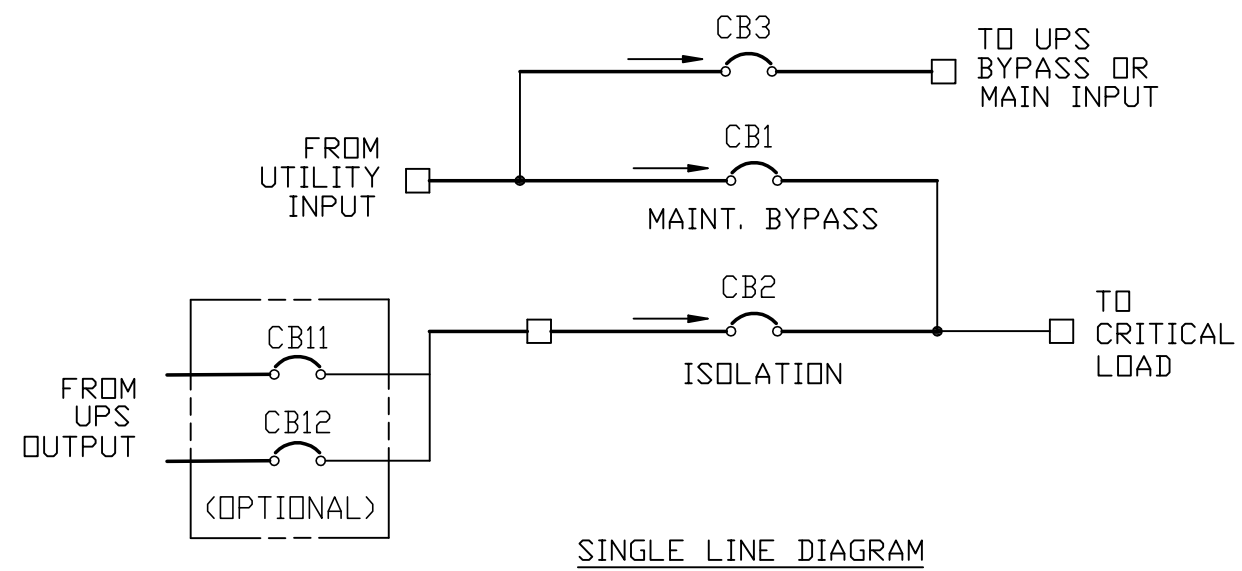


SIZE B	FSCN NO. 9L985	DWG. NO. 90-170823-00	REV. A00
SCALE 0.063		SHEET 2 OF 5	



NOTES: UNLESS OTHERWISE SPECIFIED.

SIZE B	FSCN NO. 9L985	DWG. NO. 90-170823-00	REV. A00
SCALE 0.094		SHEET 3 OF 5	



4.1 ALL CONNECTIONS ARE PROVIDED AND CONNECTED BY CUSTOMER.
RECOMMENDED WIRES: #20 AWG.

NOTES: UNLESS OTHERWISE SPECIFIED.

SIZE B	FSCN NO. 9L985	DWG. NO. 90-170823-00	REV. A00
SCALE 0.078		SHEET 4 OF 5	

