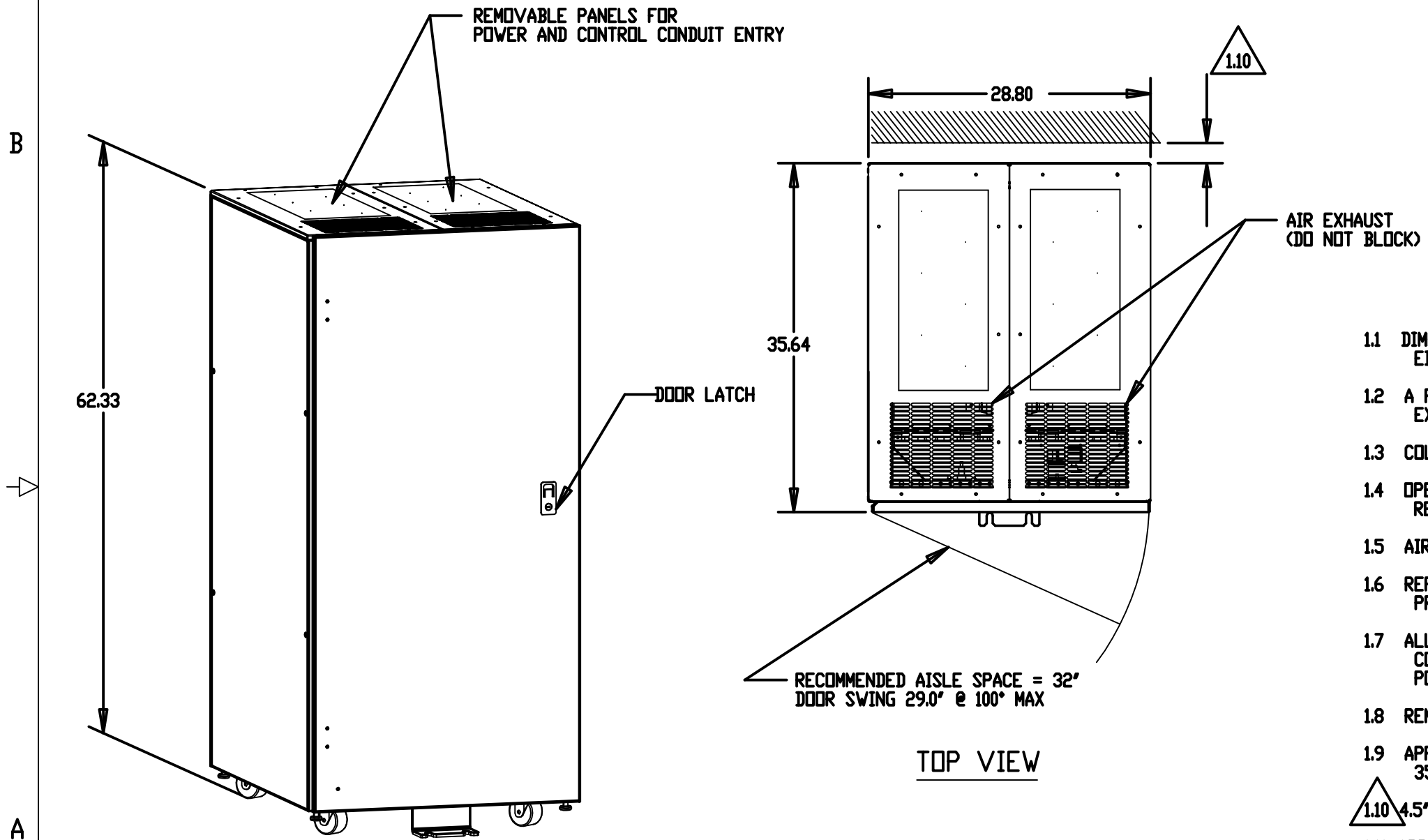


MGE UPS SYSTEMS, INC. (MGE) CLAIMS PROPRIETARY RIGHTS IN THE MATERIAL DISCLOSED HEREON. THIS DOCUMENT IS ISSUED FOR ENGINEERING INFORMATION ONLY. IT MAY NOT BE DISCLOSED TO OTHERS NOR MAY IT BE USED FOR MANUFACTURING PURPOSES WITHOUT WRITTEN PERMISSION FROM MGE.

| REVISIONS |     |                         |          |          |
|-----------|-----|-------------------------|----------|----------|
| ZONE      | REV | DESCRIPTION             | DATE     | APPROVED |
|           | A00 | RELEASED PER ECN-005038 | 11/02/06 | I.K.     |
|           |     |                         |          |          |



- 1.1 DIMENSION FORMAT IS INCHES. ALL DIMENSIONS ARE TO THE OUTSIDE EDGE OF THE CABINET, EXCLUDING DOOR LATCH AND ALL HARDWARE.
- 1.2 A PHILLIPS SCREWDRIVER IS REQUIRED TO REMOVE INTERNAL AND EXTERNAL PANELS.
- 1.3 COLOR: LIGHT GREY, TIGER DRYLAC 249/12170.
- 1.4 OPERATING TEMPERATURE: 32°F TO 86°F (30°C) MAX. RECOMMENDED OPERATING RANGE: 60°F (15°C) TO 77°F (25°C)
- 1.5 AIR EXHAUST: TOP.
- 1.6 REFER TO MGE DOCUMENT NO. 9-00038-00 FOR CABLE PREPARATION PROCEDURE FOR FIELD WIRING.
- 1.7 ALL EXTERNAL WIRING SUPPLIED AND CONNECTED BY CUSTOMER. CONTROL WIRES SHOULD BE ROUTED SEPARATELY FROM POWER CABLES.
- 1.8 REMOVE NEUTRAL-TO-GROUND BOND IN EACH PARALLEL UPS.
- 1.9 APPLICABLE RATINGS AND SBC MODEL NUMBERS: 225A: 72-170822-22, 350A: 72-170832-22.
- 1.10 4.5' MINIMUM DISTANCE TO WALL WHEN USING SEISMIC BRACKETS.
- 1.11 APPROXIMATE WEIGHT: 300 LBS.

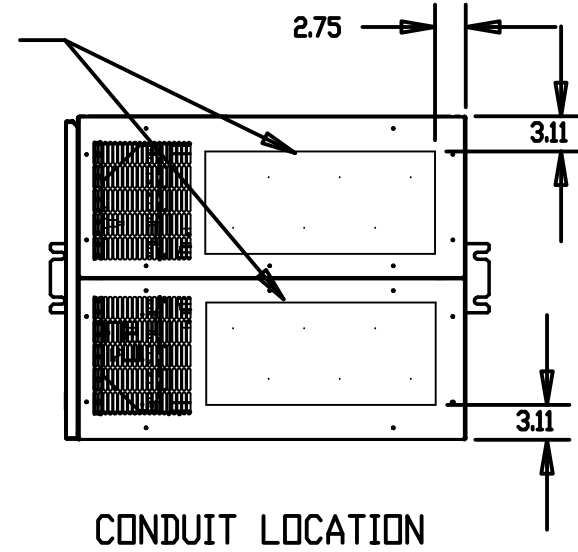
NOTES: UNLESS OTHERWISE SPECIFIED.

|   |              |         |  |          |   |              |              |      |
|---|--------------|---------|--|----------|---|--------------|--------------|------|
| UNLESS OTHERWISE SPECIFIED DIMENSIONS ARE IN INCHES TOLERANCES ARE: | CONTRACT NO. |         | <b>MGE</b> MGE UPS Systems, Inc.<br>UPS SYSTEMS 1660 Scenic Avenue<br>Costa Mesa, CA 92626 |          |   |              |              |      |
|   | DECIMALS     | ANGLES  | APPROVALS  | DATE     | INSTALLATION DRAWING<br>2CB SYSTEM BYPASS CABINET<br>GALAXY 3000 PARALLEL |              |              |      |
|   |              | DRAWN   | H.DINH   | 09/01/06 |   |              |              |      |
|   |              | CHECKED | J.LING   | 09/01/06 |   |              |              |      |
| MATERIAL  |              | MFG ENG |  |          | SIZE  | FSCN NO.     | DWG. NO.     | REV. |
| FINISH  |              | ISSUED  | I.KENNEDY  | 09/01/06 | B   | 9L985        | 90-170822-00 | A00  |
|   |              |         |  |          | SCALE 0.078   | SHEET 1 OF 5 |              |      |

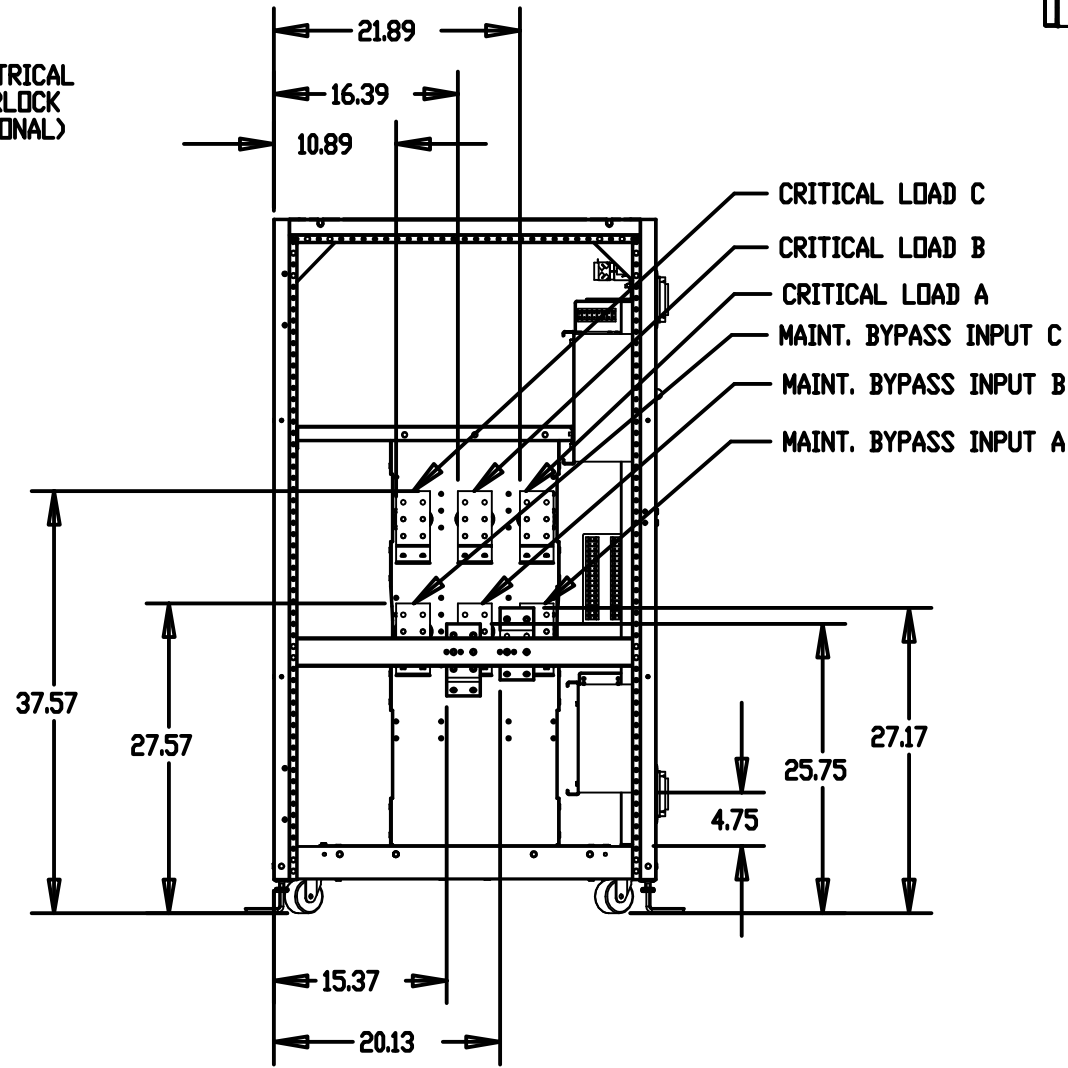
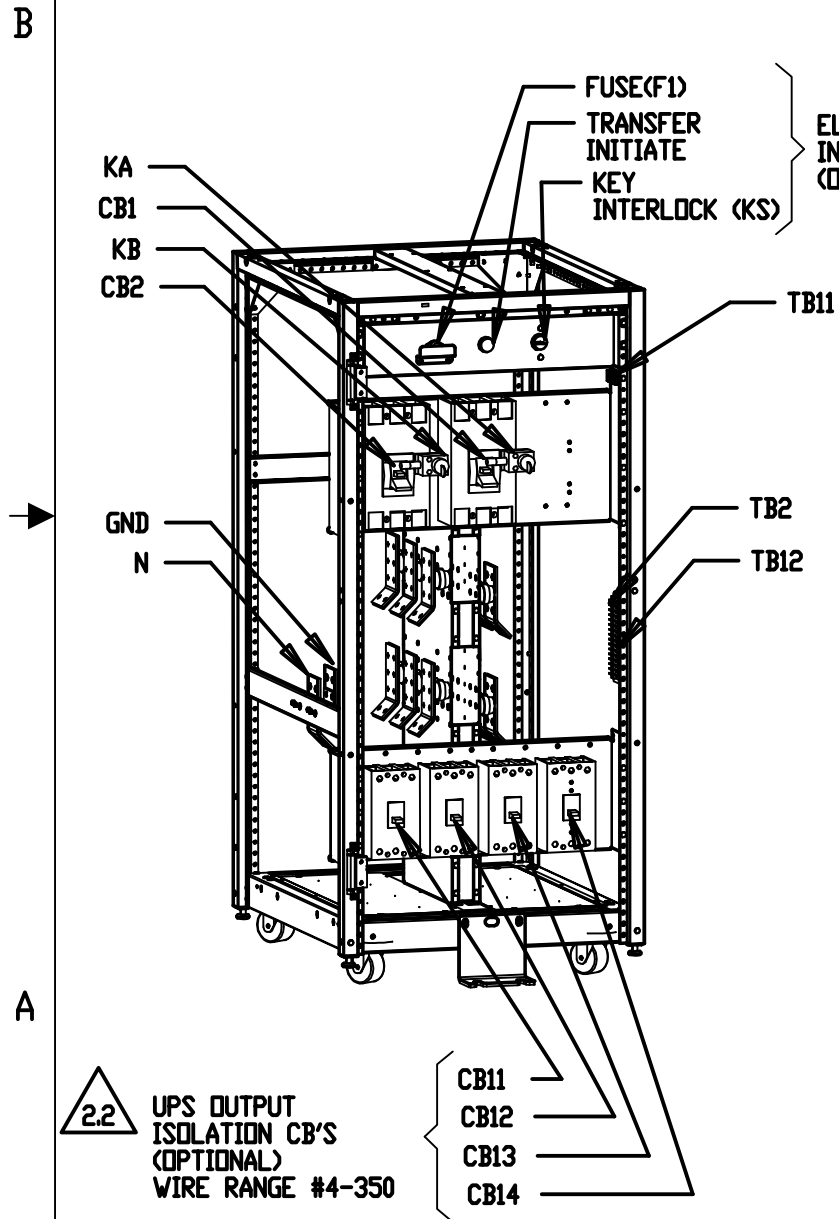
RECOMMENDED POWER WIRING

|              |                        | 60KVA        | 90KVA         |
|--------------|------------------------|--------------|---------------|
|              |                        | 2CB          | 2CB           |
|              |                        | 72-170822-22 | 72-170832-22  |
| INPUT/OUTPUT | CB1, CB2               | 4/0          | 500 or 2x 2/0 |
|              | NEUTRAL                | 2x 1/0       | 2x 4/0        |
|              | GROUND                 | 4 AWG        | 3 AWG         |
| FROM UPS     | CB11, CB12, CB13, CB14 | 2 AWG        | 2 AWG         |
|              | NEUTRAL                | 1/0          | 1/0           |
|              | GROUND                 | 6 AWG        | 6 AWG         |

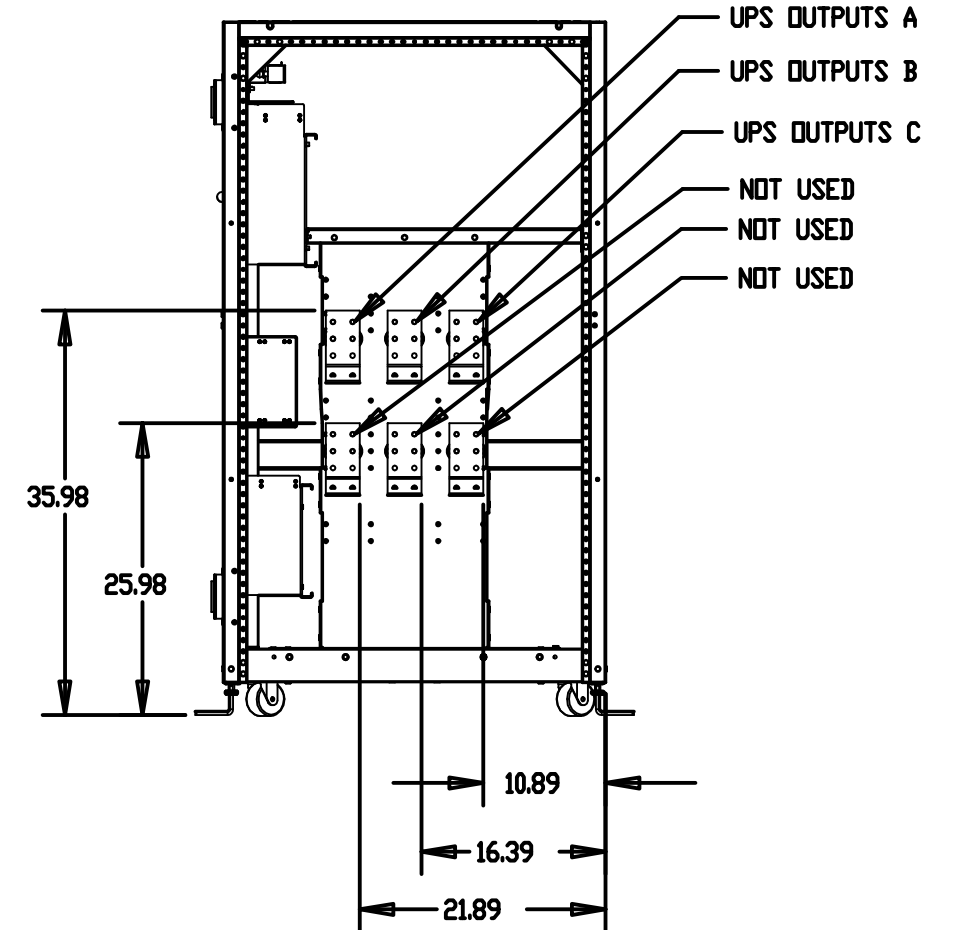
20.44 X 9.13  
CONDUIT PLATE



CONDUIT LOCATION



LEFT SIDE VIEW



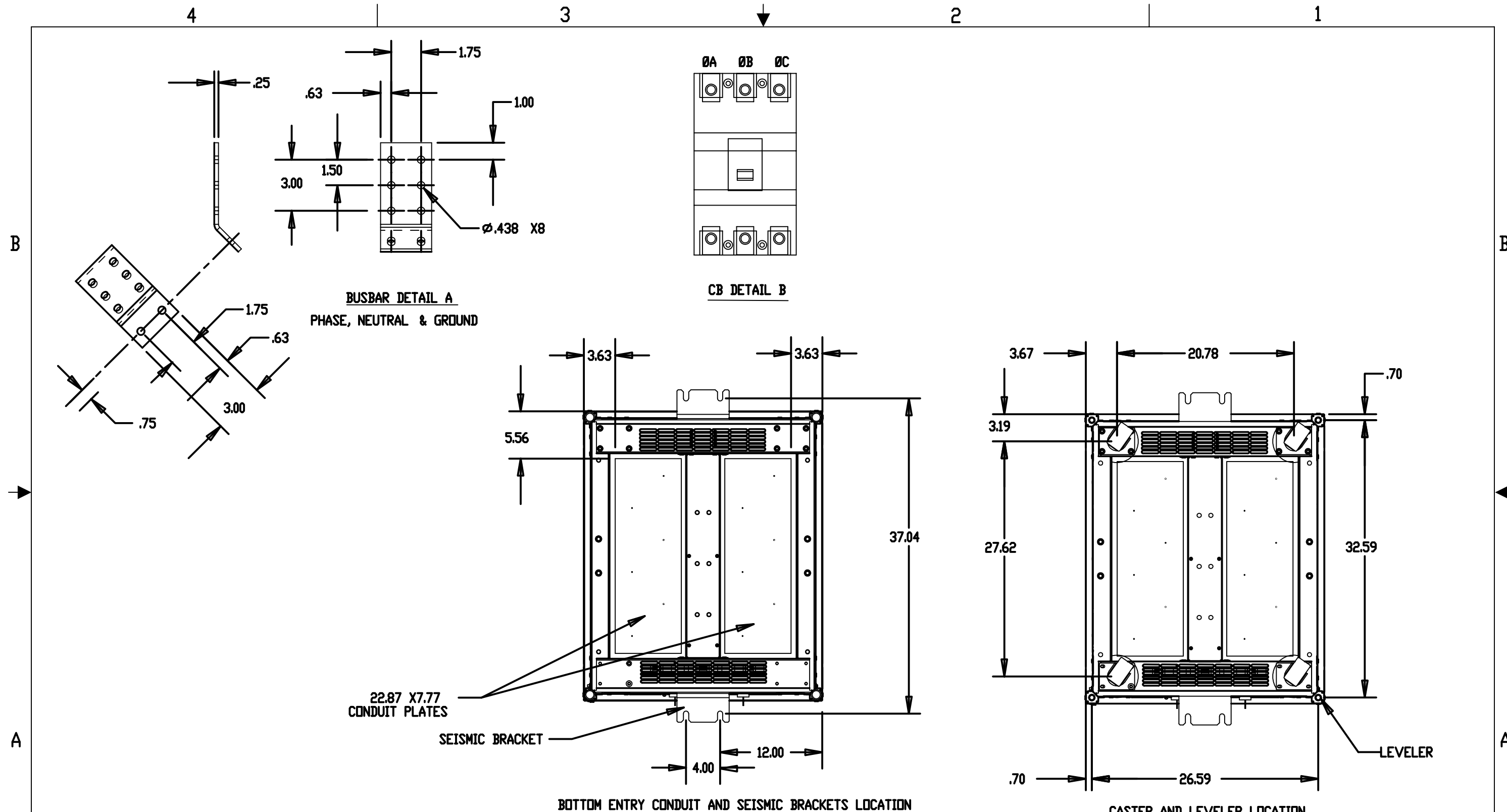
RIGHT SIDE VIEW

2.2 UPS OUTPUT ISOLATION CB'S (OPTIONAL) WIRE RANGE #4-350

2.2 CB PHASING SHOWN ON SHEET 3, DETAIL B.  
2.1 BUSBAR DETAIL SHOWN ON SHEET 3, DETAIL A.

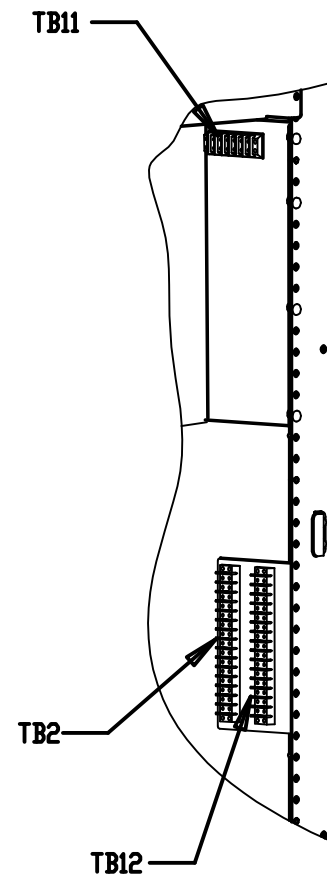
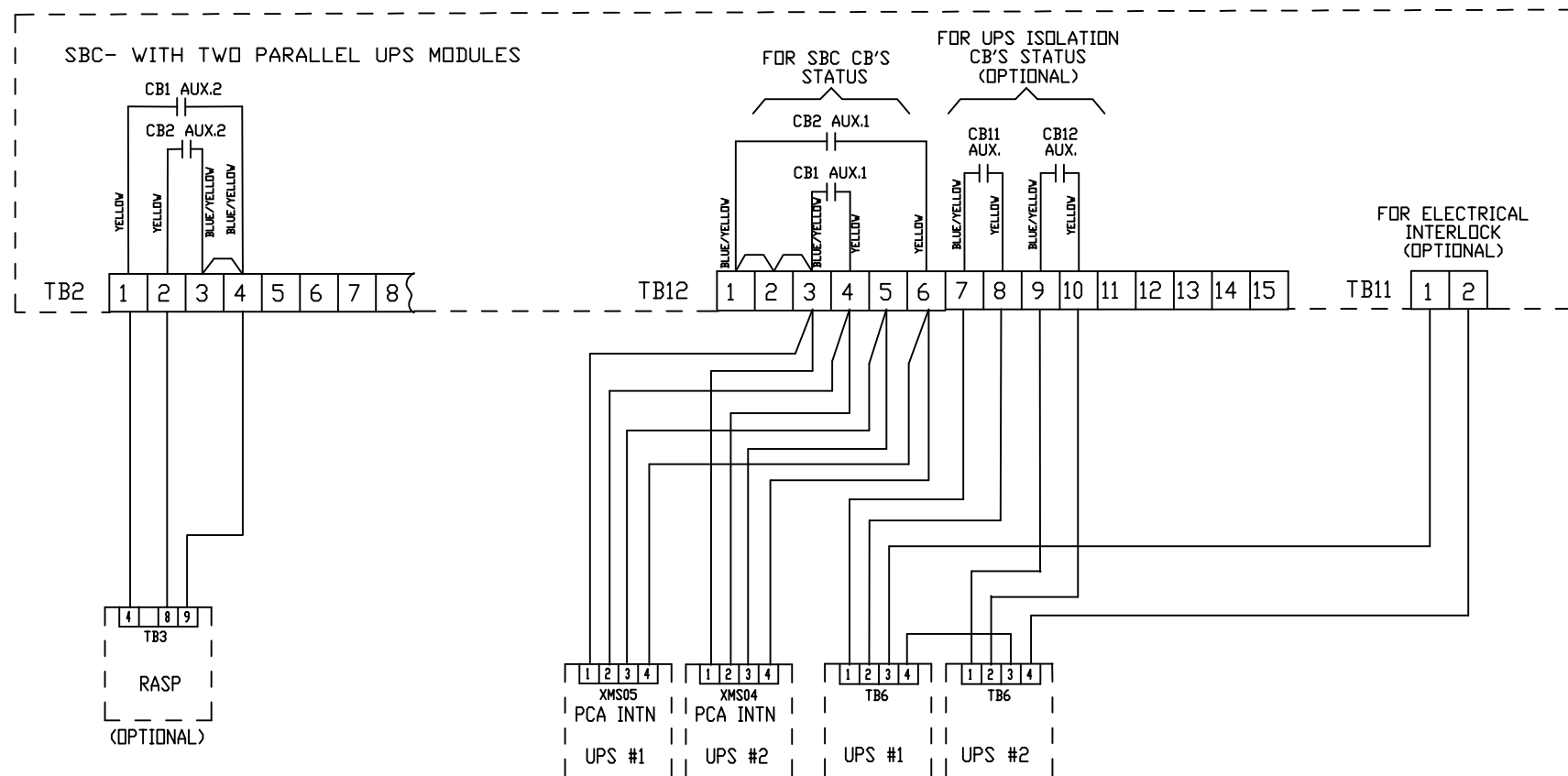
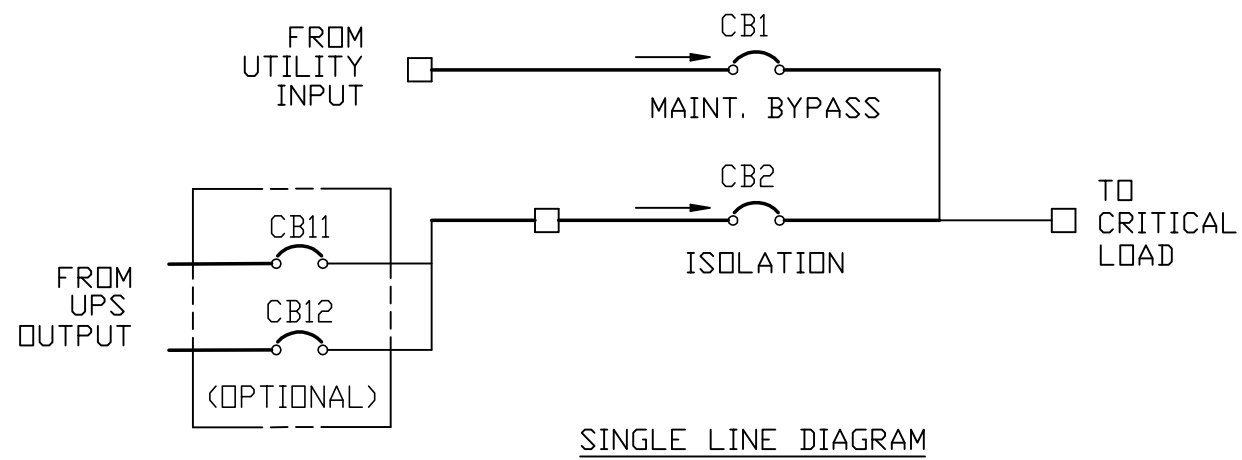
NOTES: UNLESS OTHERWISE SPECIFIED.

|             |                   |                          |             |
|-------------|-------------------|--------------------------|-------------|
| SIZE<br>B   | FSCN NO.<br>9L985 | DWG. NO.<br>90-170822-00 | REV.<br>A00 |
| SCALE 0.063 |                   | SHEET 2 OF 5             |             |



NOTES: UNLESS OTHERWISE SPECIFIED.

|             |                   |                          |             |
|-------------|-------------------|--------------------------|-------------|
| SIZE<br>B   | FSCN NO.<br>9L985 | DWG. NO.<br>90-170822-00 | REV.<br>A00 |
| SCALE 0.094 |                   | SHEET 3 OF 5             |             |



4.1 ALL CONNECTIONS ARE PROVIDED AND CONNECTED BY CUSTOMER.  
RECOMMENDED WIRES: #20 AWG.

NOTES: UNLESS OTHERWISE SPECIFIED.

|             |                   |                          |             |
|-------------|-------------------|--------------------------|-------------|
| SIZE<br>B   | FSCN NO.<br>9L985 | DWG. NO.<br>90-170822-00 | REV.<br>A00 |
| SCALE 0.078 |                   | SHEET 4 OF 5             |             |

4

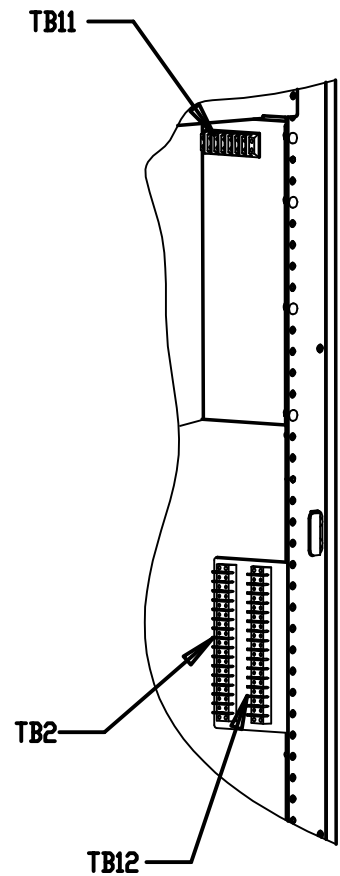
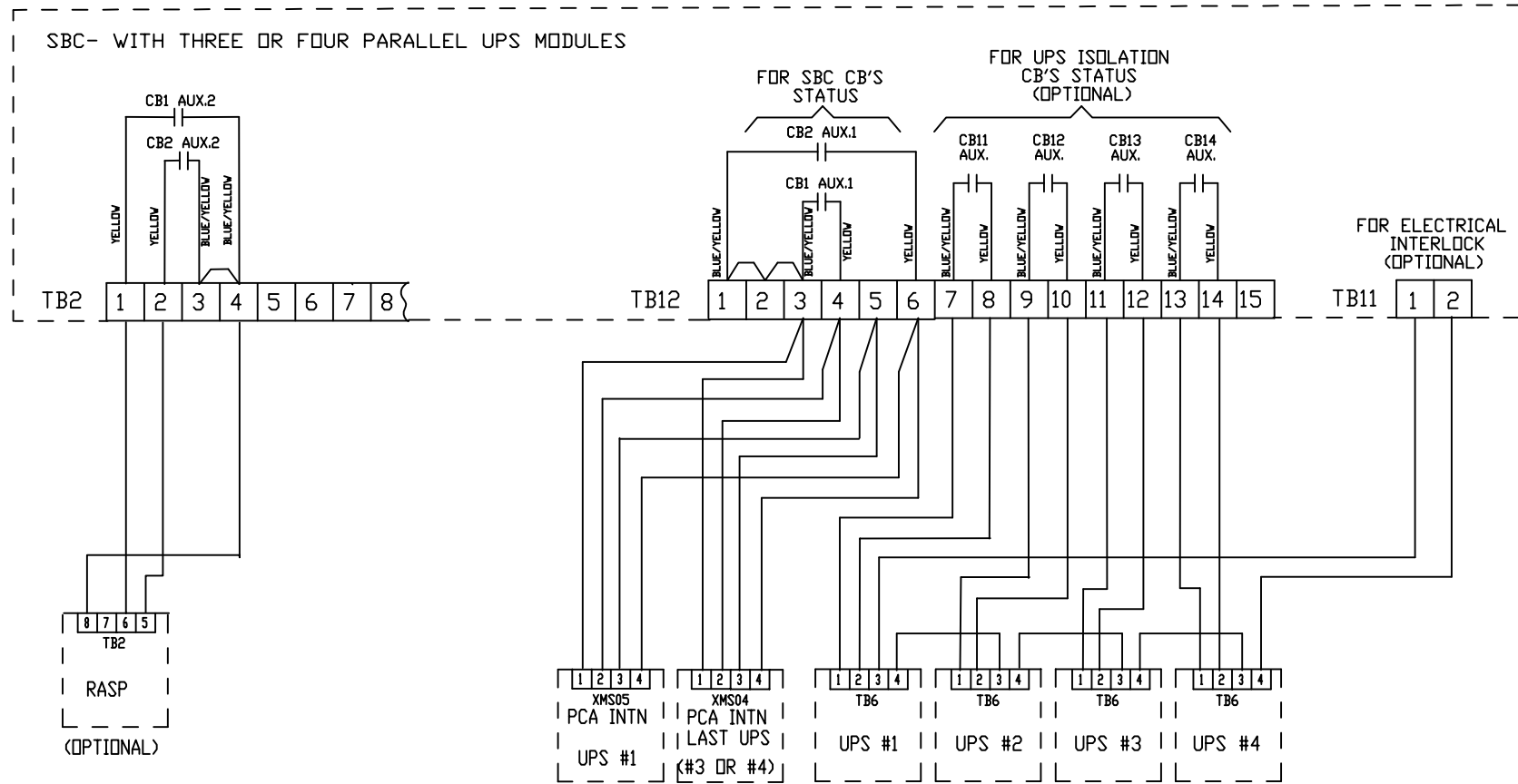
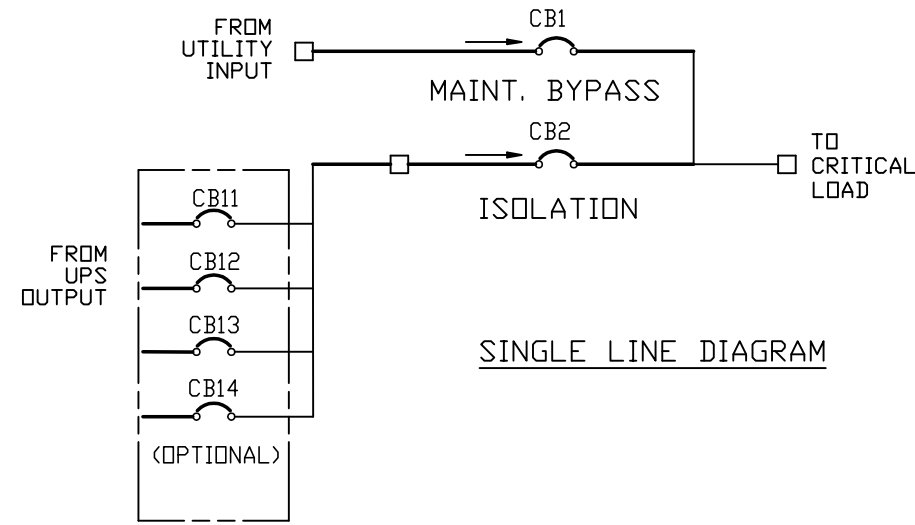
3

2

1

B

B



A

5.1. ALL CONNECTIONS ARE PROVIDED AND CONNECTED BY CUSTOMER.  
RECOMMENDED WIRES: #20 AWG.

NOTES: UNLESS OTHERWISE SPECIFIED.

4

3

2

1

A

|             |                   |                          |             |
|-------------|-------------------|--------------------------|-------------|
| SIZE<br>B   | FSCN NO.<br>9L985 | DWG. NO.<br>90-170822-00 | REV.<br>A00 |
| SCALE 0.078 |                   | SHEET 5 OF 5             |             |