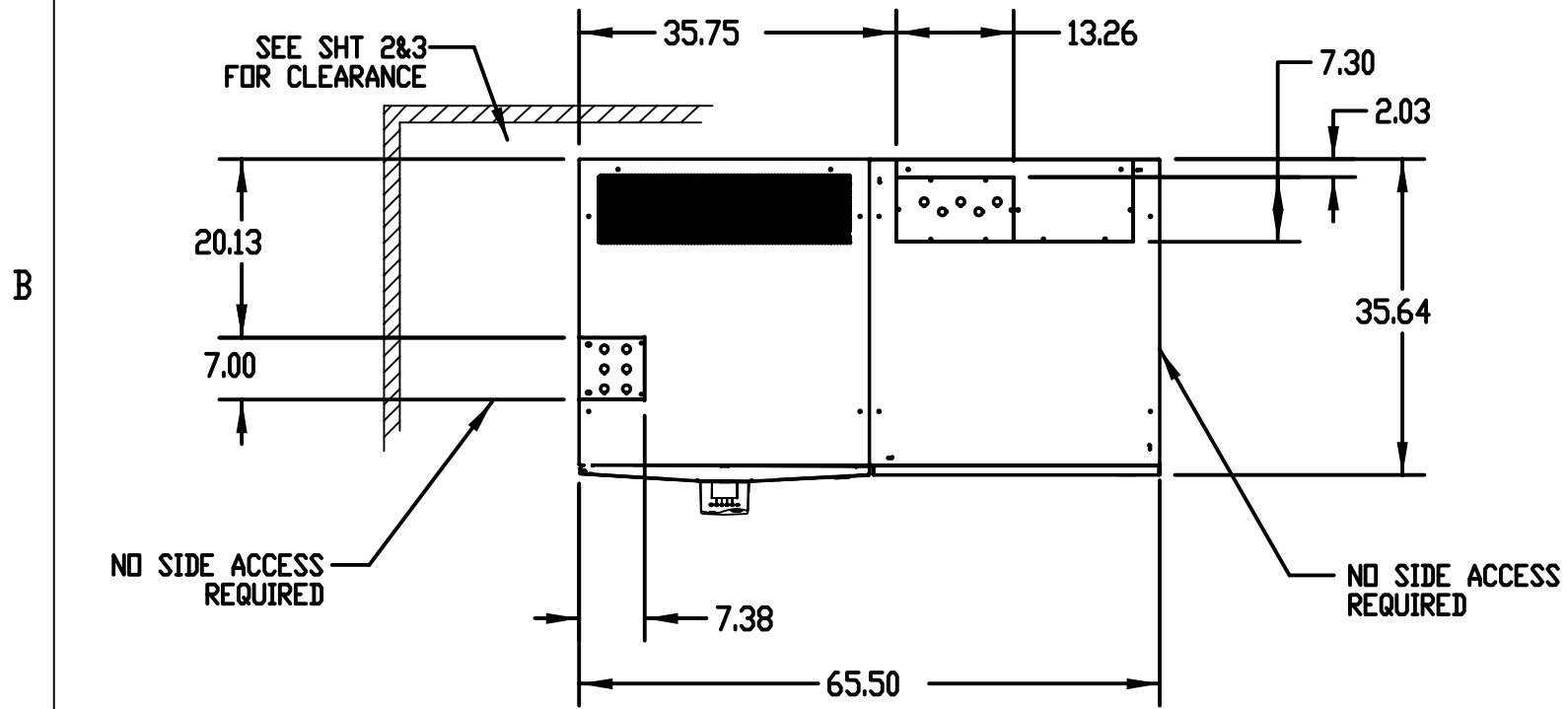


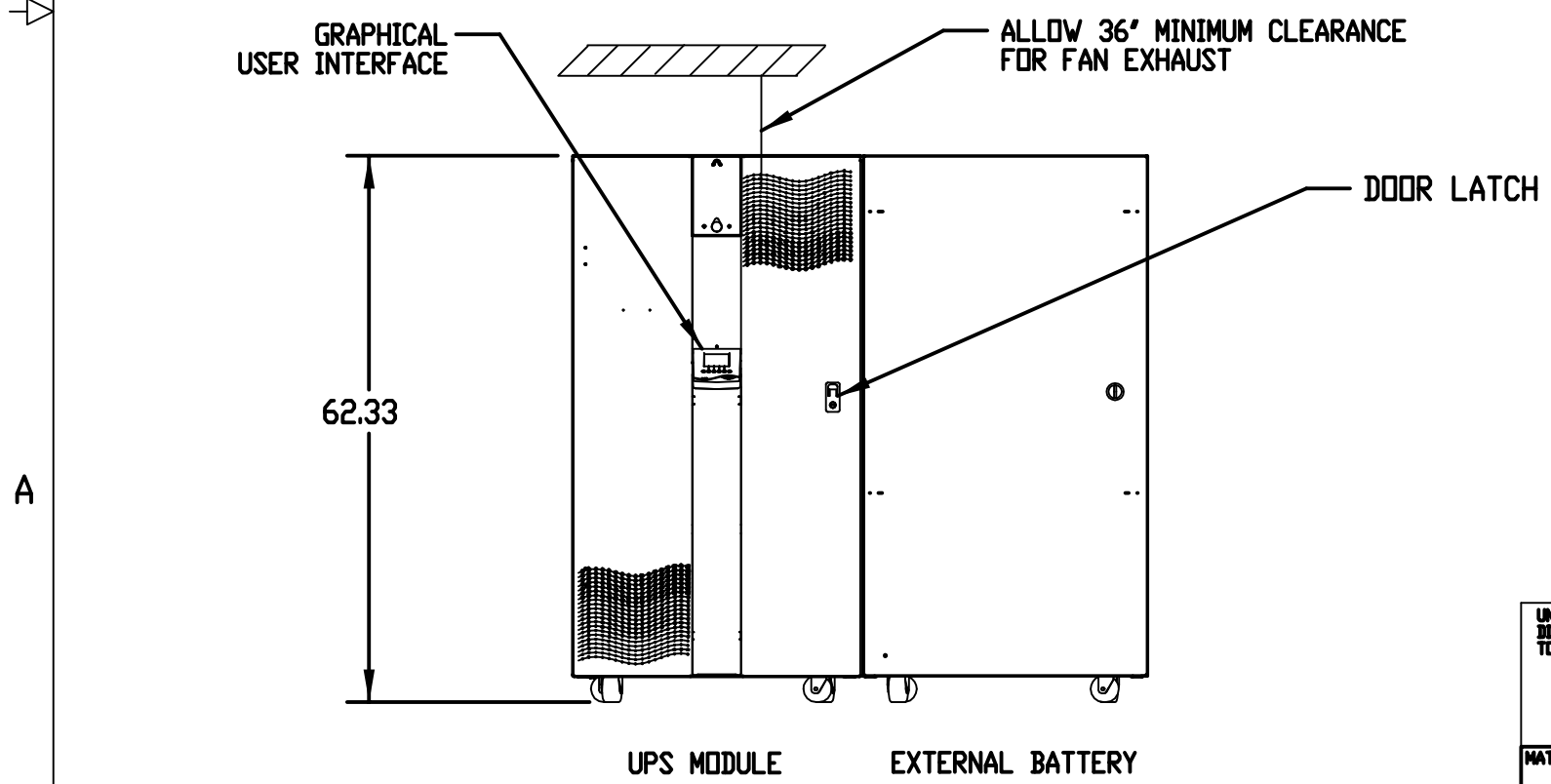
MGE UPS SYSTEMS, INC. (MGE) CLAIMS PROPRIETARY RIGHTS IN THE MATERIAL DISCLOSED HEREON. THIS DOCUMENT IS ISSUED FOR ENGINEERING INFORMATION ONLY. IT MAY NOT BE DISCLOSED TO OTHERS NOR MAY IT BE USED FOR MANUFACTURING PURPOSES WITHOUT WRITTEN PERMISSION FROM MGE.

GALAXY 3000 PARALLEL PHYSICAL CHARACTERISTICS 20-30kVA UPS AND BATTERY CABINET

| REVISIONS | | | | |
|-----------|-----|------------------------|----------|----------|
| ZONE | REV | DESCRIPTION | DATE | APPROVED |
| | A00 | RELEASE PER ECN-005038 | 11-02-06 | I.K. |



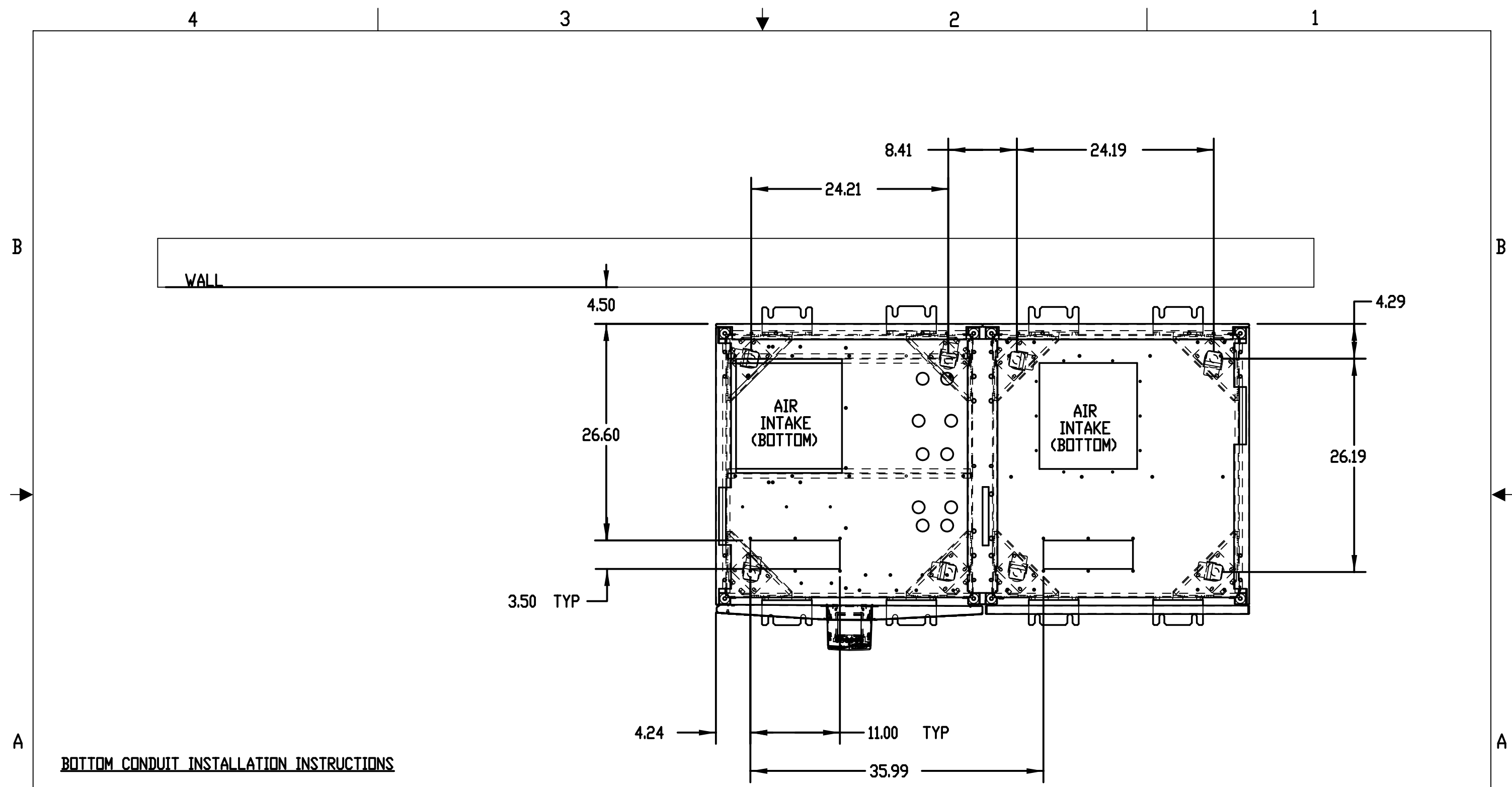
- 1.1 DIMENSION FORMAT IS IN INCHES.
- 1.2 ALL DIMENSIONS ARE TO THE OUTSIDE EDGE OF CABINET, EXCLUDING DOOR LOCK AND HARDWARE.
- 1.3 A PHILLIPS SCREWDRIVER IS REQUIRED TO REMOVE INTERNAL AND EXTERNAL PANELS.
- 1.4 COLOR: MGE LIGHT GRAY.
- 1.5 OPERATING TEMPERATURE: 32 DEG. F (0 DEG. C) MIN. TO 86 DEG. F (30 DEG. C) MAX. RECOMMENDED OPERATING RANGE: 60 DEG. F (15 C) TO 77 DEG. F (25 DEG. C) REFER TO SPECS FOR HIGHER TEMPERATURES.
HEAT REJECTION IS OUT OF TOP OF CABINETS.
- 1.6 IF STORING UPS FOR MORE THAN THREE MONTHS, UPS SHOULD BE POWERED UP FOR 8 HOURS MIN. EVERY THREE MONTHS TO PREVENT DAMAGE TO BATTERIES.



| CABINET BACKUP TIME & WEIGHTS | | | | |
|-------------------------------|--------------------|--------|------------|---------------------------|
| | BACKUP TIME (MIN.) | | UPS (LBS.) | EXT. BATT. MIN/MAX (LBS.) |
| | 20 KVA | 30 KVA | | |
| NO BATTERIES | N/A | N/A | 1185 | - |
| LEVEL 5 EXTERNAL BATTERY | 43 | 29 | N/A | 1940/2058 |
| LEVEL 6 EXTERNAL BATTERY | 60 | 45 | N/A | 2458/2658 |

NOTES: UNLESS OTHERWISE SPECIFIED.

| | | | | | | | | |
|---|--------------|------------|---------------------------|--|---|---|--------------|------|
| UNLESS OTHERWISE SPECIFIED DIMENSIONS ARE IN INCHES TOLERANCES ARE: DECIMALS XX ±.03 XXX ±.010 | CONTRACT NO. | | MGE UPS SYSTEMS | | | MGE UPS Systems, Inc. 1660 Scenic Avenue Costa Mesa, CA 92626 | | |
| | APPROVALS | | DATE | | INSTALLATION DRAWING 20-30kVA PARALLEL UPS, BATTERY CABINET GALAXY 3000 208V/208V | | | |
| MATERIAL | DRAWN | B.KHOLLOSI | 09-01-06 | | SIZE | FSCN NO. | DWG. NO. | REV. |
| FINISH | CHECKED | M.M. | 09-01-06 | | B | 9L985 | 90-170821-00 | A00 |
| | MFG ENG | | | | SCALE 0.090 | | SHEET 1 OF 4 | |
| | ISSUED | I.K. | 09-01-06 | | | | | |



BOTTOM CONDUIT INSTALLATION INSTRUCTIONS

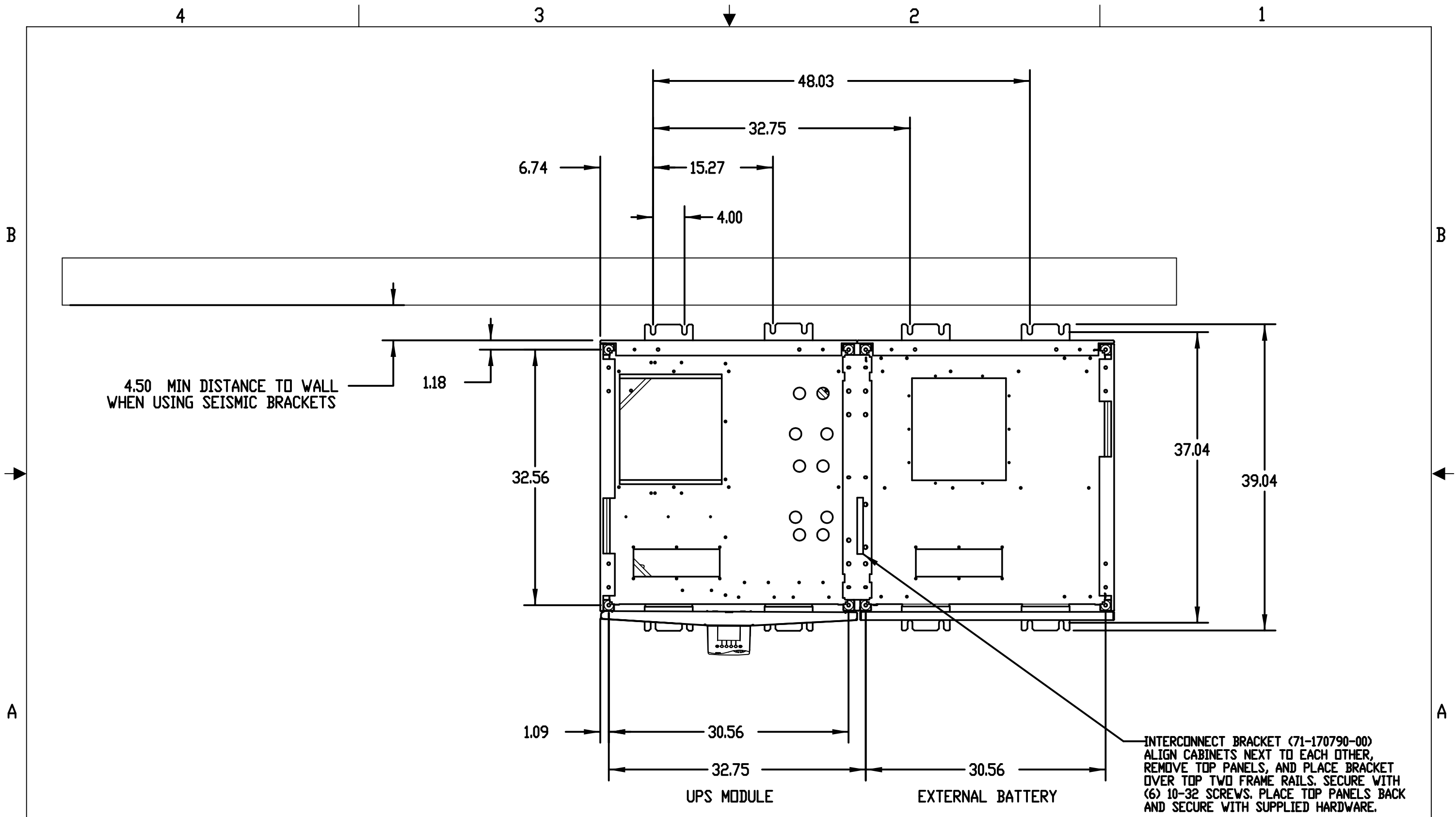
- 2.1 REMOVE SIX SCREWS FROM CONDUIT PLATE. (SAVE THE SCREWS)
- 2.2 CONDUIT PLATE MAY NOW BE REMOVED TO PUNCH CONDUIT HOLES.
- 2.3 REINSTALL CONDUIT PLATE AND SECURE WITH SIX SCREWS.

NOTES: UNLESS OTHERWISE SPECIFIED.

UPS MODULE EXTERNAL BATTERY

GALAXY 3000 BOTTOM ENTRY CONDUIT PLATE & CASTER DETAILS

| | | | |
|-------------|-------------------|--------------------------|-------------|
| SIZE B | FSCN NO. 9L985 | DWG. NO. 90-170821-00 | REV. A00 |
| SCALE 0.100 | | SHEET 2 OF 4 | |



GALAXY 3000 SEISMIC ANCHORS & LEVELER LOCATION

NOTES: UNLESS OTHERWISE SPECIFIED.

| | | | |
|-------------|-------------------|--------------------------|-------------|
| SIZE B | FSCN NO. 9L985 | DWG. NO. 90-170821-00 | REV. A00 |
| SCALE 0.100 | | SHEET 3 OF 4 | |

ELECTRICAL CHARACTERISTICS

| | | |
|--|--------------------------------|--------------------------------|
| RATING AT 0.8 PF LAG. VIN/VOUT | 20 KVA 208/208 | 30KVA 208/208 |
| INPUT VOLTAGE/ OPTIONAL BYPASS INPUT VOLTAGE | 208VAC, 3PH, 4W +G, 60HZ | 208VAC, 3PH, 4W +G, 60HZ |
| NOMINAL INPUT CURRENT ON UPS/ON BYPASS | 52A/56A | 78A/83A |
| MAXIMUM INPUT CURRENT (AT LOW LINE -15%) | 61A | 92A |
| OUTPUT VOLTAGE | 208VAC, 3PH, 4W +G, 60HZ | 208VAC, 3PH, 4W +G, 60HZ |
| OUTPUT CURRENT (FULL LOAD) | 56A | 83A |
| DC FLOAT VOLTAGE (MIN) | 272VDC | 272VDC |
| DC NOMINAL VOLTAGE | 240VDC | 240VDC |
| DC CURRENT AT NOMINAL VOLTAGE | 78A | 116A |
| MAXIMUM DC CURRENT AT CUT-OFF VOLTAGE | 94A | 141A |
| BATTERY DISCONNECT QF1 | 125A | 125A |
| MAXIMUM HEAT GENERATION (BTU/HR) | 8200 | 12200 |
| RECOMMENDED UPSTREAM DEVICE | 70A | 110A |

NOTES: UNLESS OTHERWISE SPECIFIED.

| | | | |
|-------------|-------------------|--------------------------|-------------|
| SIZE B | FSCN NO. 9L985 | DWG. NO. 90-170821-00 | REV. A00 |
| SCALE 0.020 | | SHEET 4 OF 4 | |