

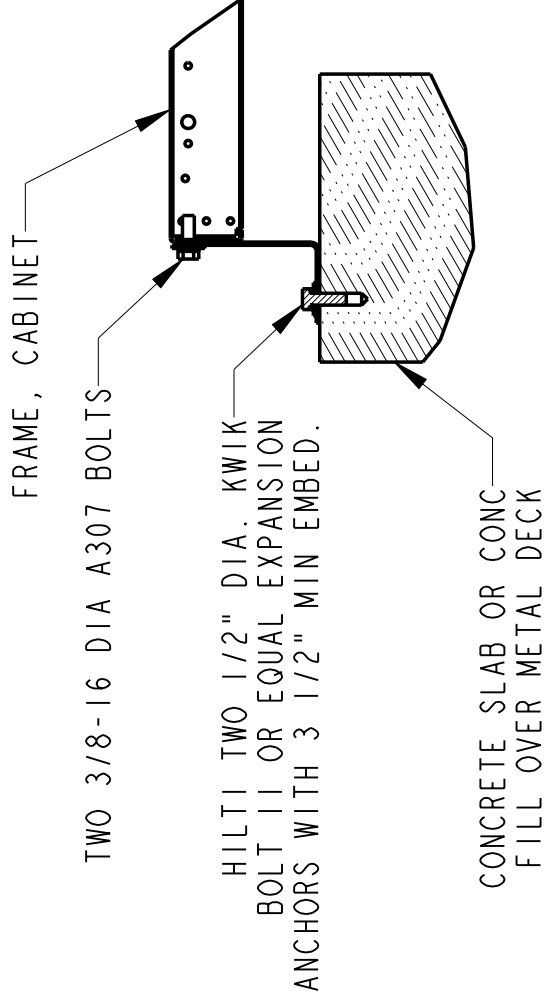
MGE UPS SYSTEMS, INC. (MGE) CLAIMS PROPRIETARY RIGHTS IN THE MATERIAL DISCLOSED HEREON. THIS DOCUMENT IS ISSUED FOR ENGINEERING INFORMATION ONLY. IT MAY NOT BE DISCLOSED TO OTHERS NOR MAY IT BE USED FOR MANUFACTURING PURPOSES WITHOUT WRITTEN PERMISSION FROM MGE.

GALAXY 3000 SEISMIC ANCHOR INSTALLATION

INSTRUCTIONS FOR SEISMIC BRACKET INSTALLATION

CONCRETE FLOOR (FIGURE I)

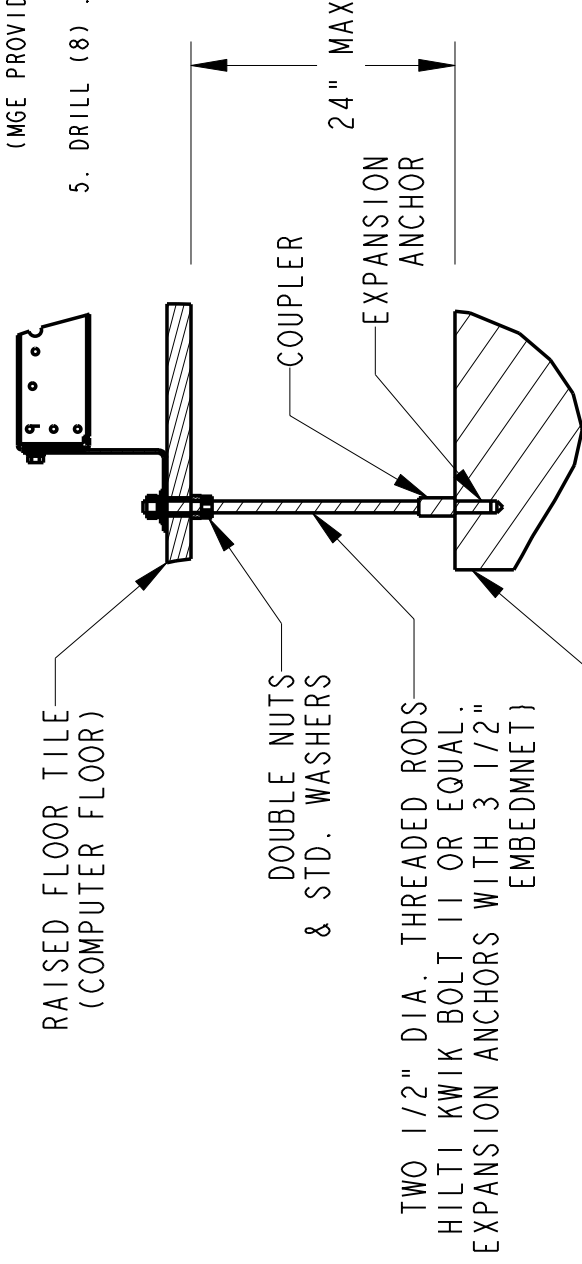
1. SELECT APPROPRIATE HOLE PATTERN FOR EQUIPMENT REQUIRED. (SEE TIE-DOWN HOLE LOCATION)
2. CUSTOMER TO DRILL HOLES IN CONCRETE FLOOR AT DIMENSIONS AS SHOWN USING CUSTOMER SUPPLIED EXPANSION ANCHORS.
-CONCRETE FLOOR MOUNTING: USE "HILTI KB11" OR EQUIV. EXPANSION TYPE ANCHORS.
-INSTALL SEISMIC KIT 85-170540-00 TO THE BASE OF THE EQUIPMENT.
3. SECURE REAR BRACKET TO FLOOR (SEE SHEET 3).
ROLL UNIT INTO BRACKET SLOTS ALIGNED WITH 3/8-16 X 2 BOLT (MGE PROVIDED, INSTALLED BY CUSTOMER).
ADJUST BOLT AS NECESSARY TO PREVENT BOLT HEAD INTERFERENCE WITH BRACKET.
4. SECURE FRONT BRACKET TO FLOOR (SEE SHEET 3).
INSTALL 3/8-16 X 1 1/2 BOLT, FLAT WASHER AND SPLIT LOCK WASHER TO BASE.
(MGE PROVIDED, INSTALLED BY CUSTOMER.)



CONCRETE FLOOR
SEISMIC ANCHOR DETAIL
(FIGURE I)

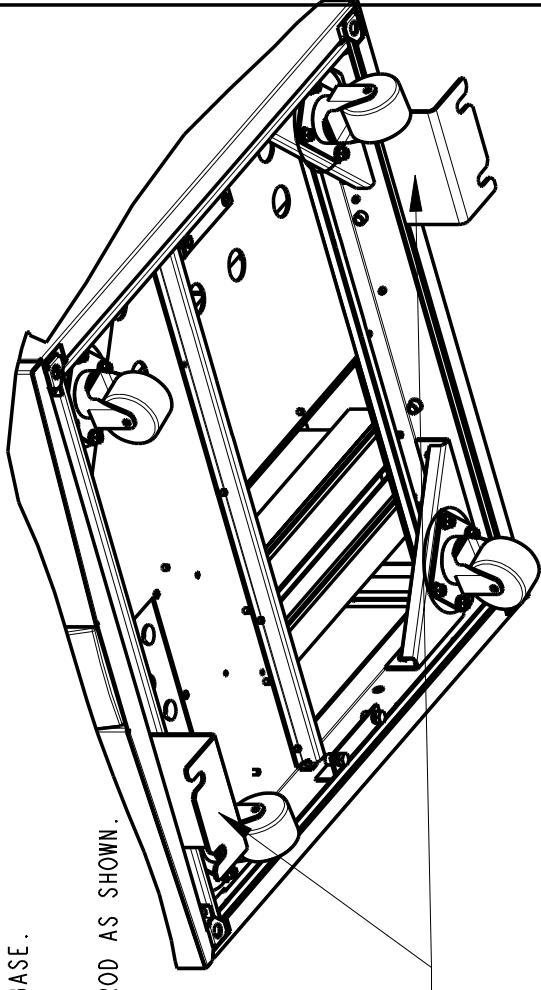
RAISED FLOOR (FIGURE J)

1. SELECT APPROPRIATE HOLE PATTERN FOR EQUIPMENT REQUIRED. (SEE TIE-DOWN HOLE LOCATION)
2. CUSTOMER TO DRILL HOLES IN CONCRETE FLOOR AT DIMENSIONS AS SHOWN USING CUSTOMER SUPPLIED EXPANSION ANCHORS.
-RAISED FLOOR MOUNTING: USE "HILTI KB 11" OR EQUIV. EXPANSION TYPE ANCHORS.
-INSTALL SEISMIC KIT 85-170540-00 TO THE BASE OF THE EQUIPMENT.
3. SECURE REAR BRACKET TO FLOOR (SEE SHEET 3).
ROLL UNIT INTO BRACKET SLOTS ALIGNED WITH 3/8-16 X 2 BOLT (MGE PROVIDED, INSTALLED BY CUSTOMER).
ADJUST BOLT AS NECESSARY TO PREVENT BOLT HEAD INTERFERENCE WITH BRACKET.)
4. SECURE FRONT BRACKET TO FLOOR (SEE SHEET 3).
INSTALL 3/8-16 X 1 1/2 BOLT, FLAT WASHER AND SPLIT LOCK WASHER TO BASE.
(MGE PROVIDED, INSTALLED TO CUSTOMER.)
5. DRILL (8) .56 DIA. CLEARANCE HOLES AND INSTALL 1/2" DIA. THREADED ROD AS SHOWN.



RAISED FLOOR
SEISMIC ANCHOR DETAIL
(FIGURE J)

SEISMIC ANCHORS:
SECURE TO FRAME
USING 3/8-16 DIA BOLT



REVISIONS

ZONE	REV	DESCRIPTION	DATE	APPROVED
	A00	RELEASED PER ECN-001787	8-10-01	C. USCOCOVICH

UNLESS OTHERWISE SPECIFIED DIMENSIONS ARE IN INCHES TOLERANCES ARE:		CONTRACT NO.	
DECIMALS .XX ±.03 .XXX ±.010	ANGLES ± 1/2°	APPROVALS	DATE
MATERIAL NONE		DRAWN J.C.RUELAS	8-10-01
FINISH NONE		CHECKED C.USCOVICH	8-11-01
		MFG ENG X X	
		ISSUED DC	8-11-01
		30KVA_INSTALLATION.X6	

MGE UPS SYSTEMS		MGE UPS Systems, Inc. 1660 Scenic Avenue Costa Mesa, CA 92626	
GALAXY 3000		SIEMIC INSTALLATION	
SIZE B	FSCM NO. 9L985	DWG. NO. 90-170065-00	REV. A00
SCALE 0.090		90-170065-00: X80.0+	
30KVA_INSTALLATION.X6		SHEET 1 OF 1	

NOTES: UNLESS OTHERWISE SPECIFIED.