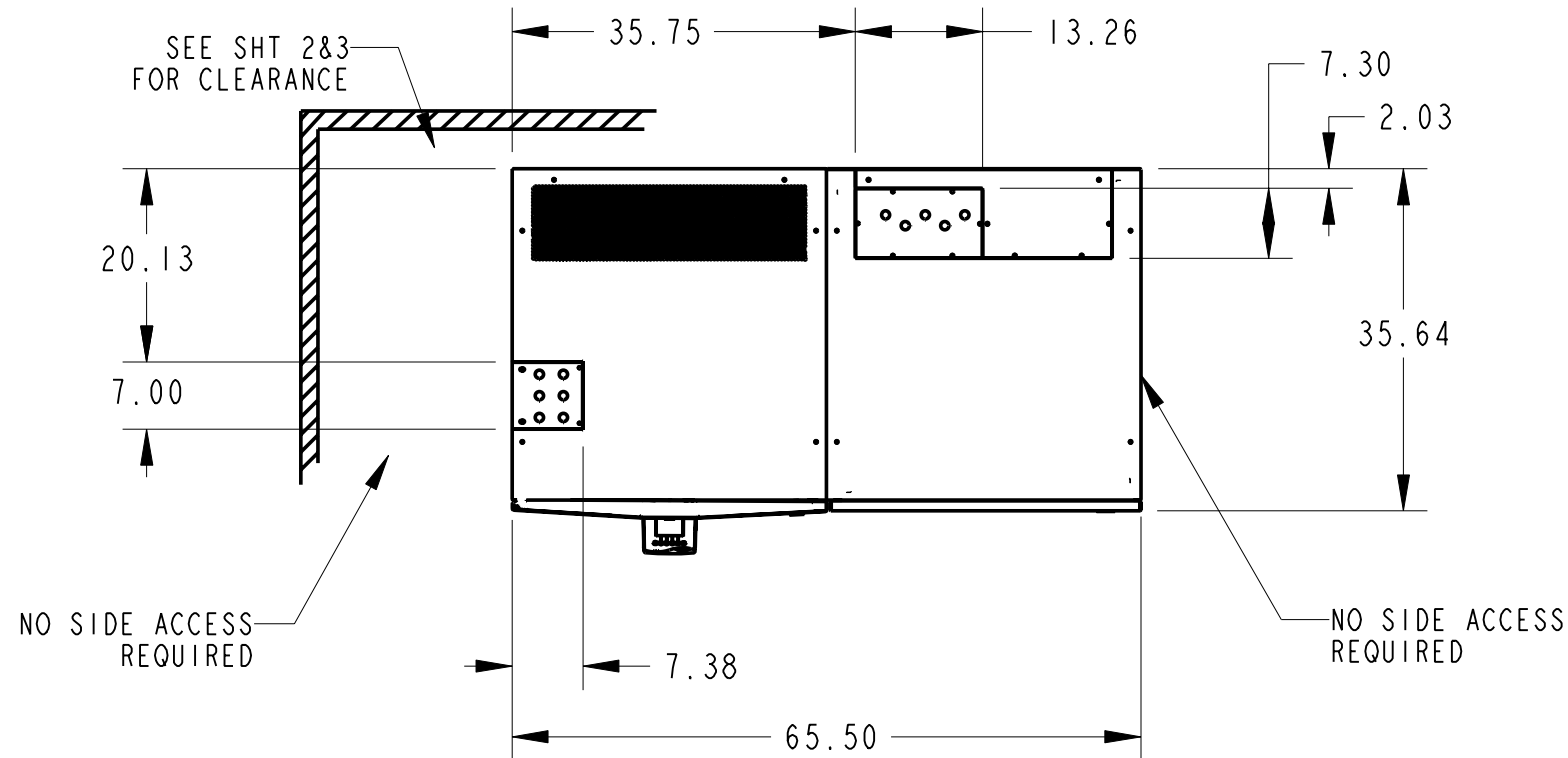


MGE UPS SYSTEMS, INC. (MGE) CLAIMS PROPRIETARY RIGHTS IN THE MATERIAL DISCLOSED HEREON. THIS DOCUMENT IS ISSUED FOR ENGINEERING INFORMATION ONLY. IT MAY NOT BE DISCLOSED TO OTHERS NOR MAY IT BE USED FOR MANUFACTURING PURPOSES WITHOUT WRITTEN PERMISSION FROM MGE.

GALAXY 3000 PHYSICAL CHARACTERISTICS 10-30kVA UPS AND BATTERY CABINET

REVISIONS

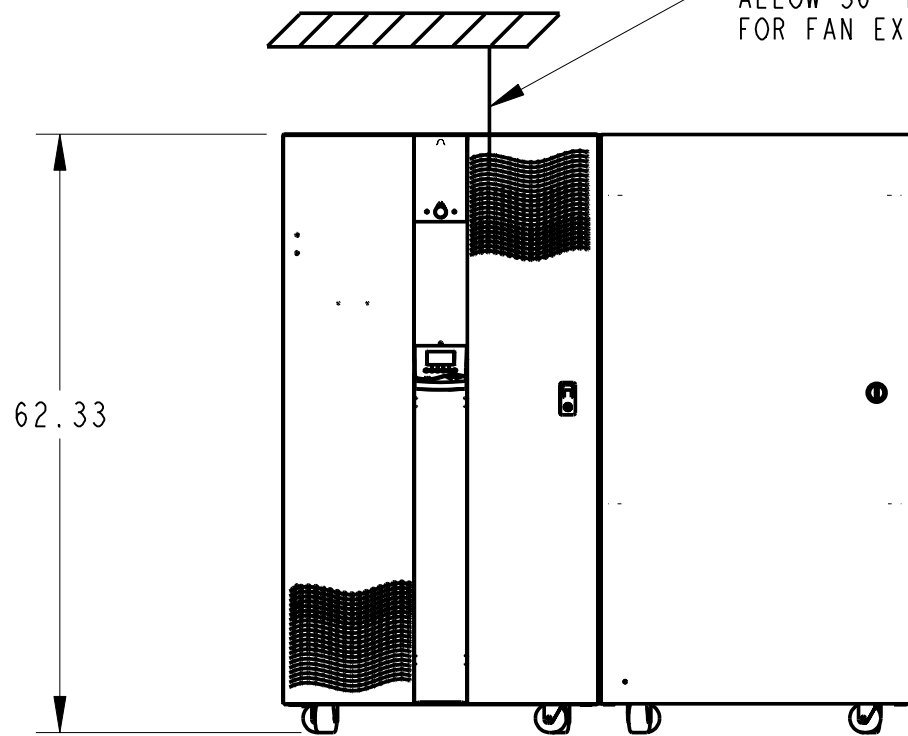
ZONE	REV	DESCRIPTION	DATE	APPROVED
	A00	RELEASED PER ECN-001787	7-30-01	D.C.
	B00	ECN 002443 ADDED SHT 5 SINGLE LINE DRAWING	06FEB02	D. LORIA
	C00	RELEASE PER ECN-002993	12/12/02	T. H.
	D00	RELEASED PER ECN-004297	11/01/05	B.K.
	D01	REVISED CHART; SEE ECN-004992	20OCT06	JRS



- 1.1 DIMENSION FORMAT IS IN INCHES.
- 1.2 ALL DIMENSIONS ARE TO THE OUTSIDE EDGE OF CABINET, EXCLUDING DOOR LOCK AND HARDWARE.
- 1.3 A PHILLIPS SCREWDRIVER IS REQUIRED TO REMOVE INTERNAL AND EXTERNAL PANELS.
- 1.4 COLOR: MGE LIGHT GRAY.
- 1.5 OPERATING TEMPERATURE: 32 DEG. F (0 DEG. C) MIN. TO 86 DEG. F (30 DEG. C) MAX. RECOMMENDED OPERATING RANGE: 60 DEG. F (15 C) TO 77 DEG. F (25 DEG. C) REFER TO SPECS FOR HIGHER TEMPERATURES.

(HEAT REJECTION IS OUT OF TOP OF CABINETS.)
- 1.6 IF STORING UPS FOR MORE THAN THREE MONTHS, UPS SHOULD BE POWERED UP FOR 8 HOURS MIN. EVERY THREE MONTHS TO PREVENT DAMAGE TO BATTERIES.

ALLOW 36" MINIMUM CLEARANCE FOR FAN EXHAUST



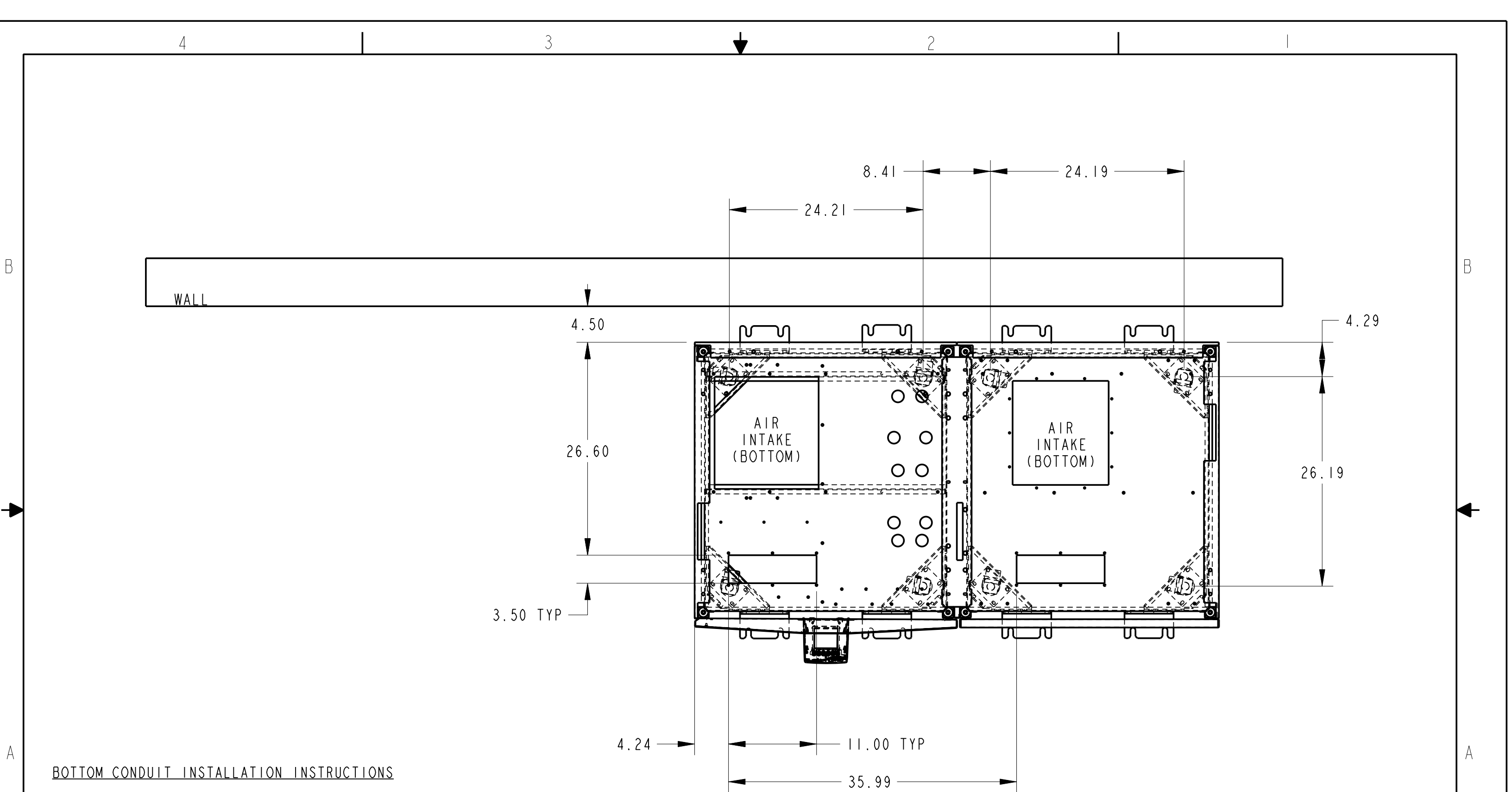
UPS MODULE EXTERNAL BATTERY
(OPTIONAL)

CABINET	CABINET WEIGHT (lbs)
UPS	SEE CHART BELOW
LEVEL 5 & 6 EXTERNAL BATTERY	1940 MIN / 2723 MAX

UPS CABINET WEIGHTS								
	10-15 KVA				20-30 KVA			
	BACKUP TIME (MIN.)		W/INPUT XFMR (LBS.)	NO INPUT XFMR (LBS.)	BACKUP TIME (MIN.)		W/INPUT XFMR (LBS.)	NO INPUT XFMR (LBS.)
	10 KVA	15 KVA			20 KVA	30 KVA		
NO BATTERIES	N/A	N/A	1032	742	N/A	N/A	1185	785
LEVEL 1 BATTERY	12	8	1322	1032	N/A	N/A	N/A	N/A
LEVEL 2 BATTERY	36	20	1549/1716	1302/1469	14	8	1702/1869	1302/1469
LEVEL 3 BATTERY	56	33	1832/1892	1542/1602	23	12	1832/1892	1585/1645
LEVEL 4 BATTERY	92	51	2182/2412	1935/2165	36	19	2395/2565	1935/2165

NOTES: UNLESS OTHERWISE SPECIFIED.

UNLESS OTHERWISE SPECIFIED DIMENSIONS ARE IN INCHES TOLERANCES ARE: DECIMALS .XX ±.03 .XXX ±.010 ANGLES ± 1/2°		CONTRACT NO.		MGE UPS SYSTEMS		MGE UPS Systems, Inc. 1660 Scenic Avenue Costa Mesa, CA 92626	
APPROVALS		DATE		INSTALLATION DRAWING 10-30kVA UPS, BATTERY CABINET			
DRAWN J.C. RUELAS		06/09/01					
CHECKED F.CENDEGAS		06-09-01					
MATERIAL		MFG ENG		SIZE	FSCM NO.	DWG. NO.	REV.
FINISH		ISSUED D. CRUICKSHANK		B	9L985	90-170060-00	D01
				SCALE 0.090		30KVA_INSTALLATION.X6	SHEET 1 OF 4



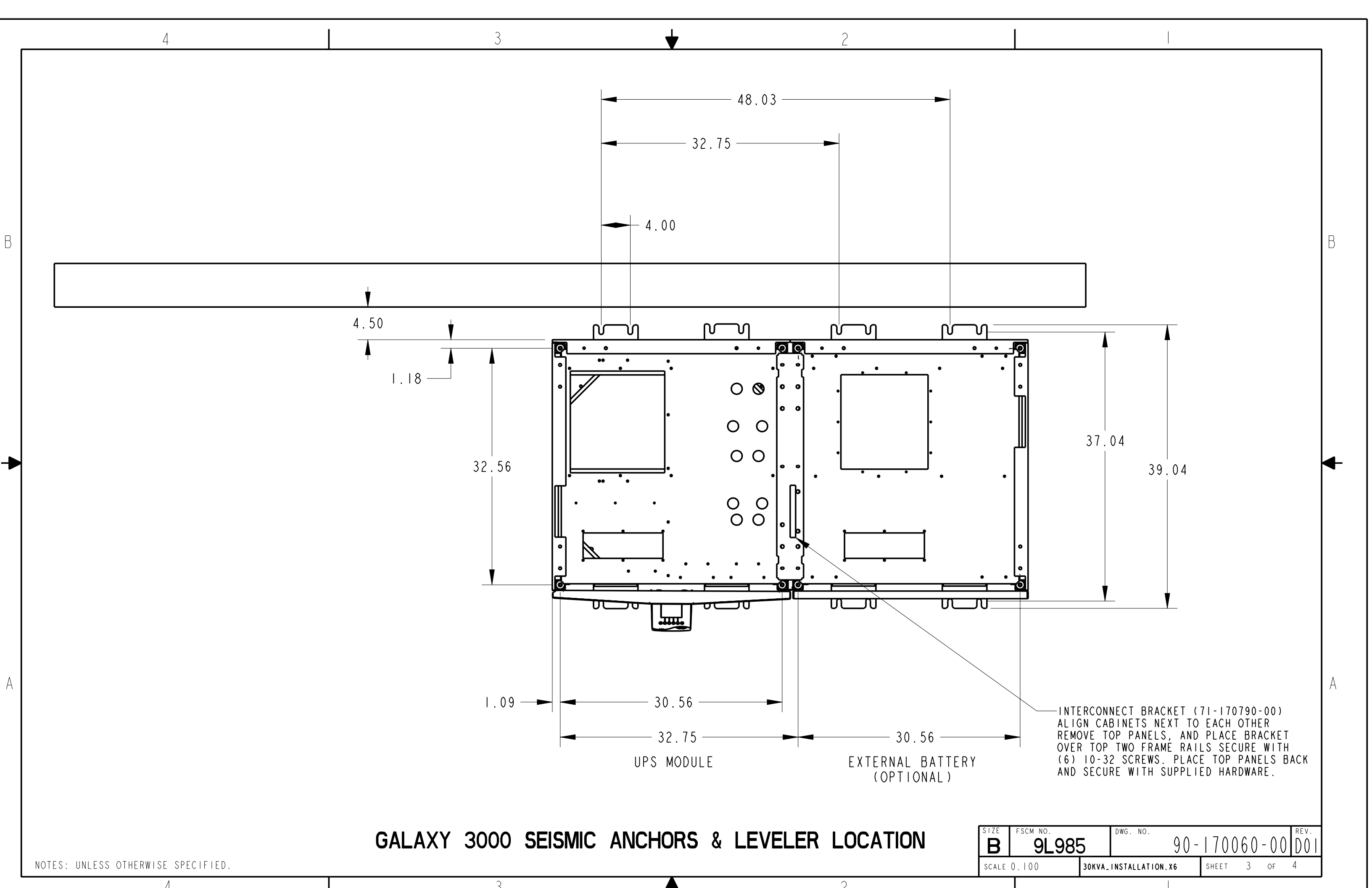
BOTTOM CONDUIT INSTALLATION INSTRUCTIONS

- 2.1. REMOVE SIX SCREWS FROM CONDUIT PLATE. (SAVE THE SCREWS)
- 2.2. CONDUIT PLATE MAY NOW BE REMOVED TO PUNCH CONDUIT HOLES.
- 2.3. REINSTALL CONDUIT PLATE AND SECURE WITH FOUR SCREWS.

NOTES: UNLESS OTHERWISE SPECIFIED.

GALAXY 3000 BOTTOM ENTRY CONDUIT PLATE & CASTER DETAILS

SIZE B	FSCM NO. 9L985	DWG. NO. 90-170060-00	REV. D01
SCALE 0.100		30KVA_INSTALLATION.X6	SHEET 2 OF 4



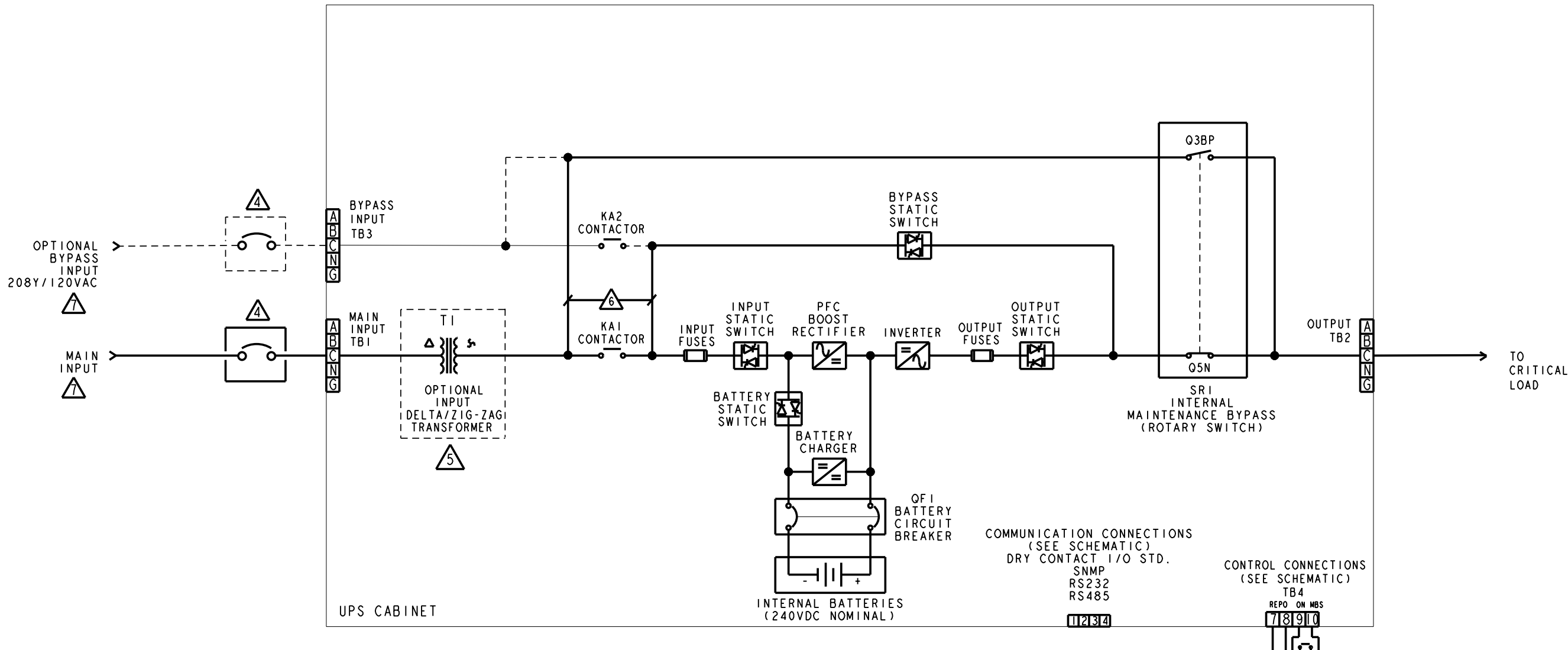
INTERCONNECT BRACKET (71-170790-00)
 ALIGN CABINETS NEXT TO EACH OTHER
 REMOVE TOP PANELS, AND PLACE BRACKET
 OVER TOP TWO FRAME RAILS SECURE WITH
 (6) 10-32 SCREWS. PLACE TOP PANELS BACK
 AND SECURE WITH SUPPLIED HARDWARE.

GALAXY 3000 SEISMIC ANCHORS & LEVELER LOCATION

NOTES: UNLESS OTHERWISE SPECIFIED.

SIZE B	FSCM NO. 9L985	DWG. NO. 90-170060-00	REV. D01
SCALE 0.100		30KVA_INSTALLATION.X6	SHEET 3 OF 4

SINGLE LINE DIAGRAM



ELECTRICAL SPECIFICATIONS

Frequency (in/out) 60Hz (+8% / -25%)
 Input Phase Rotation A,B,C, Clockwise
 Input PF > 0.98
 Input THD < 3%
 Input Voltage { 208,220,(±15%) 3 Phase, 4W+G.
 480,600,(±15%) 3 Phase, 3W+G.
 Nominal DC Voltage (Float) 240 VDC (272VDC Float)
 Min. DC Voltage 200 VDC
 Max. DC Current 60ADC (10-15KVA), 120ADC (20-30KVA)
 Internal Battery Disconnect (QFI) 63 A (10/15 kVA), 125 A (20/30 kVA)
 Internal Maintenance Bypass Switch (A) 55 A (10/15 kVA), 100 A (20/30 KVA)

NOTES: UNLESS OTHERWISE SPECIFIED.

Nominal Input and Output Currents (A)

Vin/Vout	10KVA / 8KW		15KVA / 12 KW		20KVA / 16KW		30KVA / 24KW	
	I (in)	I (out)	I (in)	I (out)	I (in)	I (out)	I (in)	I (out)
208/208	26	28	39	42	52	56	78	83
220/220	26	26	39	39	53	53	79	79
480/208	12	28	18	42	23	56	35	83
600/208	10	28	14	42	19	56	29	83

Input Circuit Breaker Rating

Vin	10KVA / 8KW	15KVA / 12KW	20KVA / 16KW	30KVA / 24KW
208-220	40A	60A	70A	100A
480	20A	30A	40A	50A
600	20A	20A	30A	40A

Maximum Heat Rejection (BTU's)

10KVA / 8KW	15KVA / 12KW	20KVA / 16KW	30KVA / 24KW
4,100	6,100	8,200	12,200

NOTES: UNLESS OTHERWISE SPECIFIED

- FOLLOW ALL APPLICABLE NEC & LOCAL ELECTRICAL CODE.
- ALL EXTERNAL WIRING BY OTHERS.
- POWER & CONTROL CABLES SHALL BE IN SEPARATE CONDUITS.
- ▲ UPSTREAM PROTECTIVE DEVICE REQUIRED. PROVIDED BY OTHERS.
- ▲ OPTIONAL FOR 208VAC OR 220VAC INPUT. REQUIRED FOR 480VAC AND 600VAC.
- ▲ NOT PRESENT WITH SEPARATE BYPASS OPTION.
- ▲ INPUT/BYPASS SOURCE NEUTRAL SHALL BE SOLIDLY GROUNDING.

SIZE B	FSCM NO. 9L985	DWG. NO. 90-170060-00	REV. D01
SCALE 0.090		30KVA_INSTALLATION.X6	SHEET 4 OF 4